

Homeless

to

Home



WELCOME HOUSE, INC
Homeless to Home

ANNUAL REPORT
2025

MISSION *and* VISION

Our *vision* is to be a leader in guiding clients from **housing uncertainty to housing stability**. We accomplish this through the services we provide: Homeless Solutions, Housing and Supportive Services; and Regional Services.

Our *mission* is to provide a continuum of services that will **end homelessness and promote stability** for each person we serve.

OUR VALUES

COMPASSION

We seek to understand without judgment, each individual's unique environment and needs.

ADVOCACY

We believe in speaking on behalf of those without a voice; to participate in creating solutions to homelessness by building healthy communities through networking, service, capacity building, and creating communities of support.

INTEGRITY

We serve our clients with warmth and compassion and never take for granted the generosity of our donors and volunteers.

QUALITY

We hold ourselves to the highest professional standards, which are reflected in the quality of our programs, our people, and in the communities we serve.

LEADERSHIP

We develop innovative and sustainable processes and programs focused on providing safe shelter and supporting the transition out of homelessness.

COMMUNITY

We foster community by creating opportunities for connection, relationship building, and belonging among those we serve, along with our neighbors, partners and employees.

MESSAGE FROM THE CEO

At Welcome House, our work begins and ends with people. Every conversation, every outreach visit, every housing placement represents a life in transition, and a community strengthened.

This past year, we had the privilege of serving more than **3,000 individuals** across the communities we support. Behind that number are families securing safe housing, individuals reconnecting with stability, and neighbors finding renewed hope. The need for affordable housing and supportive services continues to grow, but so does our resolve to meet it with compassion, strategy, and accountability.

One of the most significant milestones this year was the completion of our **40-unit affordable housing development in Maysville**. This project represents more than new construction, it represents permanence, partnership, and progress. It is a tangible reminder that when vision is paired with persistence, meaningful change is possible. These 40 units will provide long-term stability for individuals and families who deserve a safe place to call home.

Our team continues to strengthen regional partnerships, refine our use of data to inform decisions, and ensure that our services remain responsive and person-centered. We are proud of the growth reflected in this report, but we remain clear-eyed about the work ahead.

As we look toward 2026, our focus is sustainability, sustaining the programs that work, strengthening financial resilience, investing in our staff, and ensuring that Welcome House remains a steady, reliable presence in every community we serve. Sustainability means building an organization that not only responds to today's challenges but is prepared for tomorrow's realities.

I am deeply grateful for our staff, board members, volunteers, donors, and community partners who make this mission possible. Because of your commitment, more than 3,000 individuals found support, and dozens of families now have a permanent place to call home.

Thank you for walking alongside us in this work.

With gratitude,



Amanda Couch
CEO, Welcome House, Inc.

ALL AGENCY NUMBERS

3,596 TOTAL INDIVIDUALS SERVED

male: 50% female: 48% other: 2%

453 TOTAL CHILDREN SERVED

3,091 TOTAL HOUSEHOLDS SERVED

77%

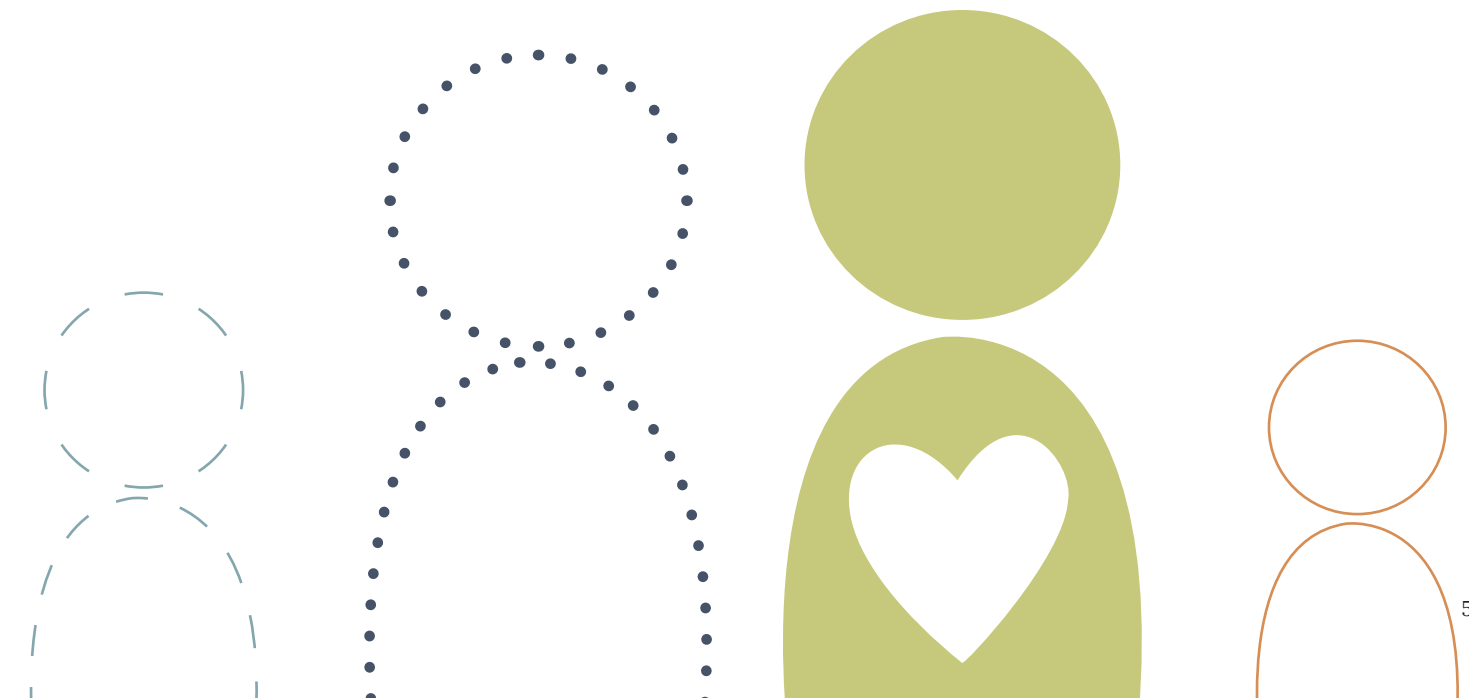
EXITS TO
POSITIVE HOUSING

99%

ACCESS TO
MAINSTREAM BENEFITS

37

TOTAL NUMBER OF
VETERANS



PROGRAM GLOSSARY

HOMELESS SOLUTIONS

STREET OUTREACH

The Outreach Program is an interdisciplinary team whose goal is to bring emergency stabilization services to specific parts of our region. The outreach team's priority is to spend time searching for those experiencing homelessness and build relationships with them as we address physical and emotional needs. In addition, the team continues to knock down transportation barriers by meeting the program participants where they are in the community.

FRONT DOOR

The Front Door system provides accessibility to services for any person who feels they may qualify by completing a brief but thorough assessment. Assessments identify the potential program participant's need for assistance, referrals, resources, or connection to a scheduled initial appointment with a Service Coordinator.

DIVERSION

Welcome House works within the geographic areas to divert people from homelessness through interactive problem-solving conversations with the program participant. After a screening interview, participants will work with Welcome House staff to understand and explore solutions to their unique housing crisis.

SERVICE COORDINATION

The Service Coordination area provides assessments, outreach, case planning, financial education, budgeting assistance, housing counseling, employment support, and community referral services. Service Coordinators work directly with residents staying at Welcome House shelter, other local shelters as well as homeless or at-risk individuals and families. After participants

obtain housing, they are offered additional in-home visits to help keep them on their targeted plan of self-sufficiency. Service Coordinators may provide additional support for up to six months. Case management can address a wide-range of situations including housing, applications for food stamps or medical insurance, budgeting, and case planning.

SOCIAL SECURITY OUTREACH, ACCESS & RECOVERY (SOAR)

The Social Security Outreach Program (SSO) uses the SOAR method to assist homeless or at-risk individuals with mental or physical disabilities to complete applications for Supplemental Security Income (SSI) or Social Security Disability Insurance (SSDI). Together with the Social Security Administration and Disability Determination Services, the program provides access to stable and permanent income, medical insurance, and social services coordination.

SHELTER SERVICES

SHELTER FOR HOMELESS WOMEN, CHILDREN, AND FAMILIES

The shelter is a safe place to stay for approximately 65 homeless women, children and families. Welcome House is the only family shelter that will accept men who have children or an entire familial unit. Residents of the Shelter work with Service Coordinators and other Welcome House staff to increase income and access affordable housing while removing any barriers to success. While working toward stability, program participants have a safe place to live, nutritious meals, hygiene supplies, and other assistance needed.

VETERANS AFFAIRS (VA)

Welcome House can shelter up to 10 veterans experiencing homelessness. The veterans we serve have many complex and unique needs. We encourage flexibility within our program by

eliminating barriers to admission of the shelter and continually engaging veterans in our services. Residents of the Shelter work with a dedicated Service Coordinator, the local VA, and other Welcome House staff to increase income and access affordable housing. In addition, the Service Coordinator would discuss other varying eligibility requirements upon assessment.

HOUSING AND SUPPORTIVE SERVICES

RAPID RE-HOUSING (RRH)

Rapid re-housing quickly connects families and individuals experiencing homelessness to permanent housing through a tailored package of time-limited financial aid and targeted supportive services. In addition, the Rapid Re-Housing program would discuss eligibility requirements upon assessment.

PERMANENT SUPPORTIVE HOUSING (PSH)

Permanent Supportive Housing is a combination of services and housing. Specifically, it supports people with serious mental illnesses or other disabilities who need professional care, advocacy, and assistance to live stably in their communities. After meeting eligibility requirements, program participants have access to services including partial to full ongoing financial rental and utility assistance. Other services can include service coordination, substance abuse or mental health counseling, advocacy, and help in locating and maintaining employment.

GARDENS AT GREENUP

The Gardens at Greenup offers affordable, stable housing for families, consisting of 20 units containing 2-4 bedroom apartments. This

supportive housing program aims to strengthen families by providing affordable, subsidized housing with on-site support services, including Service Coordination, education planning and support, career planning, financial literacy, life skills training, and childcare. The program is unique in setting a holistic standard for self-sufficiency, including personal growth development, family activities, and building a community of support. Requirements for residency include having custody of at least one child and willingness to actively engage with the Service Coordinator for family case planning and goal development.

HOME TENANT BASED RENTAL ASSISTANCE (TBRA)

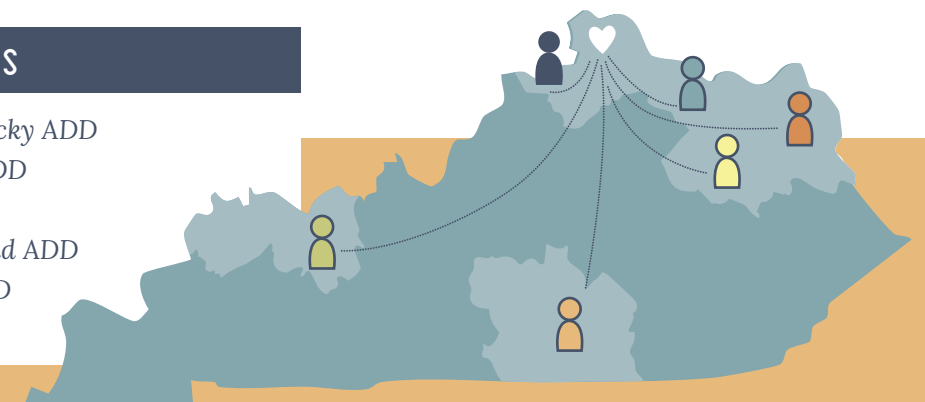
The TBRA program provides payments to make up the difference between what a household can afford to pay for housing and the local rent standard. These funds may provide assistance to help pay monthly rent and utility costs for up to 24 months. TBRA would discuss other varying eligibility requirements upon assessment.

REPRESENTATIVE PAYEE

This program assists persons with mental or physical disabilities by directly managing their income. Welcome House acts as a financial agent (called a payee) for program participants without an appropriate adult in their life to fulfill this role. Payees pay rent, utilities, and other monthly bills on the program participants' behalf. The overall results of the program focus on improved quality of life and stabilization of a vulnerable population. Program participants often transition from living on the streets with debilitating illnesses to having an income, housing, medical coverage, and the support necessary to lead a more independent life. Welcome House also offers Representative Payee services in Lexington, Kentucky.

SERVICE LOCATIONS

- Northern Kentucky ADD
- Buffalo Trace ADD
- FIVCO ADD
- Lake Cumberland ADD
- Green River ADD
- Gateway ADD



HOMELESS SOLUTIONS

STREET OUTREACH

1,551 people served throughout 6 KY ad districts

178 CHILDREN / 1373 ADULTS offered services

Every person was offered services & access to food and resources.



33% entered with a chronic health condition.

DIVERSION

9 individuals served by the diversion program

78% female / 22% male

HOUSING AND SUPPORTIVE SERVICES

RAPID RE-HOUSING (NKY & FIVCO)

93 served in our Rapid Re-Housing Program (NKY- 57 FIVCO-36)

46 were children (NKY-30 FIVCO-16)

43 average of days to obtain housing (NKY- 56 FIVCO-29)

FRONT DOOR



2,472 individuals came through our Open Door program.

SERVICE COORDINATION



359 individuals given a service coordinator

83% transitioned into permanent housing including 92 children

236 households served in Service Coordination

VETERANS AFFAIRS (VA)

37 males sheltered in our VA Program

All residents were offered wrap-around case management services from Welcome House and services from the local VA affiliate.

68% have a chronic health condition



The VA provides three full meals a day to residents

PERMANENT SUPPORTIVE HOUSING (NKY, BUFFALO TRACE & SUTTON'S LANDING, FIVCO, RURAL GATEWAY, LAKE CUMBERLAND, GREEN RIVER)

79% obtained permanent housing / 149 served through our PSH program (110 adults, 39 children)

REPRESENTATIVE PAYEE

\$ 715,452.80 total funds managed

69 served through our Representative Payee program

SOCIAL SECURITY OUTREACH, ACCESS & RECOVERY

80% overall SSI/SSDI application approval rate

31 people served through our SOAR program

SHELTER FOR HOMELESS WOMEN, CHILDREN AND FAMILIES

205 men, women & children served in Shelter including 80 CHILDREN most between the ages of 5-12 / 13% under age 5

118 total households served

18,543 nights of service

TENANT BASED RENTAL ASSISTANCE

27 served through our TBRA program / 100% gained access to mainstream benefits, including health care / NON CASH BENEFITS 67%

100% exited to permanent housing

GARDENS AT GREENUP

88 served at Gardens at Greenup (31 adults, 57 children) / 40% of those children were 5-12 years old

54% of the families had an increase in total income

28 total households served

success IN 2025

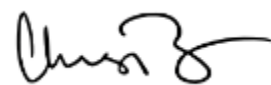
OUR BOARD

2025 was an incredible year of change at Welcome House.

From an organizational aspect, we began a search for the next Chief Executive Officer of the organization. This search yielded applicants from quite literally, across the globe. This process provided the opportunity to hear and meet from highly qualified individuals who were passionately invested in ensuring that Welcome House's mission of ending homelessness was brought to life. We were excited to offer the position to Amanda Couch, who accepted the role of Chief Executive Officer of the organization. I am confident that under Amanda's leadership, the organization will continue to take strides in helping those who are experiencing the hardest times in their lives by providing housing, food, and other much needed services.

While 2025 brought exciting change, it also brought the reality of the ongoing need within our community to help serve the homeless. Welcome House continues to lead in tackling these issues by offering Homeless Solutions, along with Housing and Supportive Services to those in need across the Commonwealth. Operating out of 8 districts across Kentucky, these services provide hope, compassion, and a sense of humanity to those unhoused. The services offered by Welcome House provide program participants with the proverbial "light at the end of the tunnel" and an assurance that their best days are ahead.

It does not go unnoticed that the success of Welcome House could not be accomplished without the incredible work of the staff, volunteers, and donors. For every gift donated at the annual Spring Shower, to every Silent Auction bid on at Summer Sunday, and every donation throughout the year, you provide an opportunity for Welcome House to serve those at a time that they need it most.



Chris Brison
Welcome House Board Chair



2025 BOARD OF DIRECTORS

- Chris Bauer, *Treasurer*
- Chris Brison, *Chair*
- Amanda Hall
- Elle Humphrey
- Amanda Meeker, *Vice-Chair*
- Alex Owsley
- Rebecca Reckers
- Marie Schenkel
- Jason Spaulding, *Secretary*
- Margaret Tierney
- Jerry Tolbert

VOLUNTEERS

Volunteers are the heart of Welcome House.

Their time, energy, and compassion fuel everything we do.

In 2025, 528 volunteers supported our mission.

Together, they gave 2,109.5 hours of their time—a contribution valued at \$62,167 in cost-free support.



528
VOLUNTEERS



2,109.5
HOURS DONATED

IN-KIND DONATIONS

Every donated item tells our clients: you matter.

From hygiene kits to home essentials, your generosity brought joy and dignity to those starting fresh. A clean pillow, a set of dishes, or a holiday gift isn't just a donation, it's a reminder that brighter days are ahead.

Food donations continued to nourish both body and spirit—whether through a warm, home-cooked meal in our shelter or a snack that filled the gap for a growing child.

These gifts don't just meet needs, they help our clients feel seen, supported, and ready to thrive.

In 2025, we received \$129,070 in donated goods—a testament to our community's compassion.

Explore our wish lists: welcomehouseky.org/get-involved/wish-list-items



WELCOME HOUSE OUTREACH

Since 1990, the WHO has been a dedicated fundraising and volunteer force behind Welcome House.

This incredible group of women leads our annual Spring Shower and Summer Sunday events, raising vital funds and collecting essential donations for our clients.

Their energy, generosity, and consistent support continue to make a lasting impact.

We're so grateful for all they do.



WHO MEMBERS

- Ann Hemmer
- Brittaney King
- Connie Cole
- Elizabeth Heist
- Emily Berning
- Jana Simms
- Karen Cady
- Karen Daugherty
- Kristen Inman
- Kristin Turner
- Liza Zalla
- Lynn Faulkner
- Pam Rose
- Pat Hemmer
- Rebecca Reckers
- Terri Ciaramitaro

EVENT HIGHLIGHTS



The 34th Annual Mardi Gras Benefitting Homeless Children took place on February 18, 2025, at the Northern Kentucky Convention Center. Guests enjoyed a lively evening of food, drinks, live music, and silent auction fun—all for a great cause.

Proceeds supported Welcome House and two partner nonprofits. In 2025, Welcome House received **\$48,400** to help children experiencing homelessness.

Queen Sponsors: Bunches of Bows, Greenhouse Renovation Services, Inc., Hollaender Manufacturing Co., Sinkula Investments
Jester Sponsors: Hub + Weber, Humana MarketPOINT/Health Horizons of Kentucky, Fidant Wealth Partners, Model Group, SimpleVMS, The David J. Joseph Company, Turner Construction, VEGA Americas, Welcome House Board
Reserved Table Sponsors: 360 American Title Services, American Legion Auxiliary, Ecollectic Jewelry Design, Regina Bakery, Richard Mayer, Trinity Episcopal Church, YMCA of Greater Cincinnati



Hosted by the WHO, the Household Shower brings in-kind donations to help families transition from homelessness into stable housing.

The 2025 event featured Steve Foltz, Director of Horticulture at the Cincinnati Zoo & Botanical Garden, as the guest speaker.

Guests arrived with gifts like bedding, kitchenware, and cleaning supplies—essentials that bring dignity, comfort, and relief to families starting fresh.

Thousands of dollars in donated goods help ensure the men, women, and children we serve don't just move in, but truly start fresh.



The 13th Annual Summer Sunday, held on August 10, 2025, was a celebration of food, music, and giving.

This signature WHO event is the only fundraiser where every dollar raised goes directly to Welcome House and the people we serve.

In 2025, the event raised **\$97,086.04** helping provide around **21,800** bednights for the men, women, and children in our Shelter.

Diamond Sponsors: Model Group, Pat Hemmer
Platinum Sponsors: Baird Tapke Group, O'Rourke Wrecking Co., Turner Construction
Gold Sponsors: Building Crafts, Inc., Toebben Companies
Silver Sponsors: Acendion Collective, DBL Law, Hollaender Manufacturing Co., Goettle, Huntington, McD Concrete, MD Pizza, MegaCorp, Scripps, St. Elizabeth, WellCare of Kentucky, Western & Southern Financial Group, Valley Interior Systems

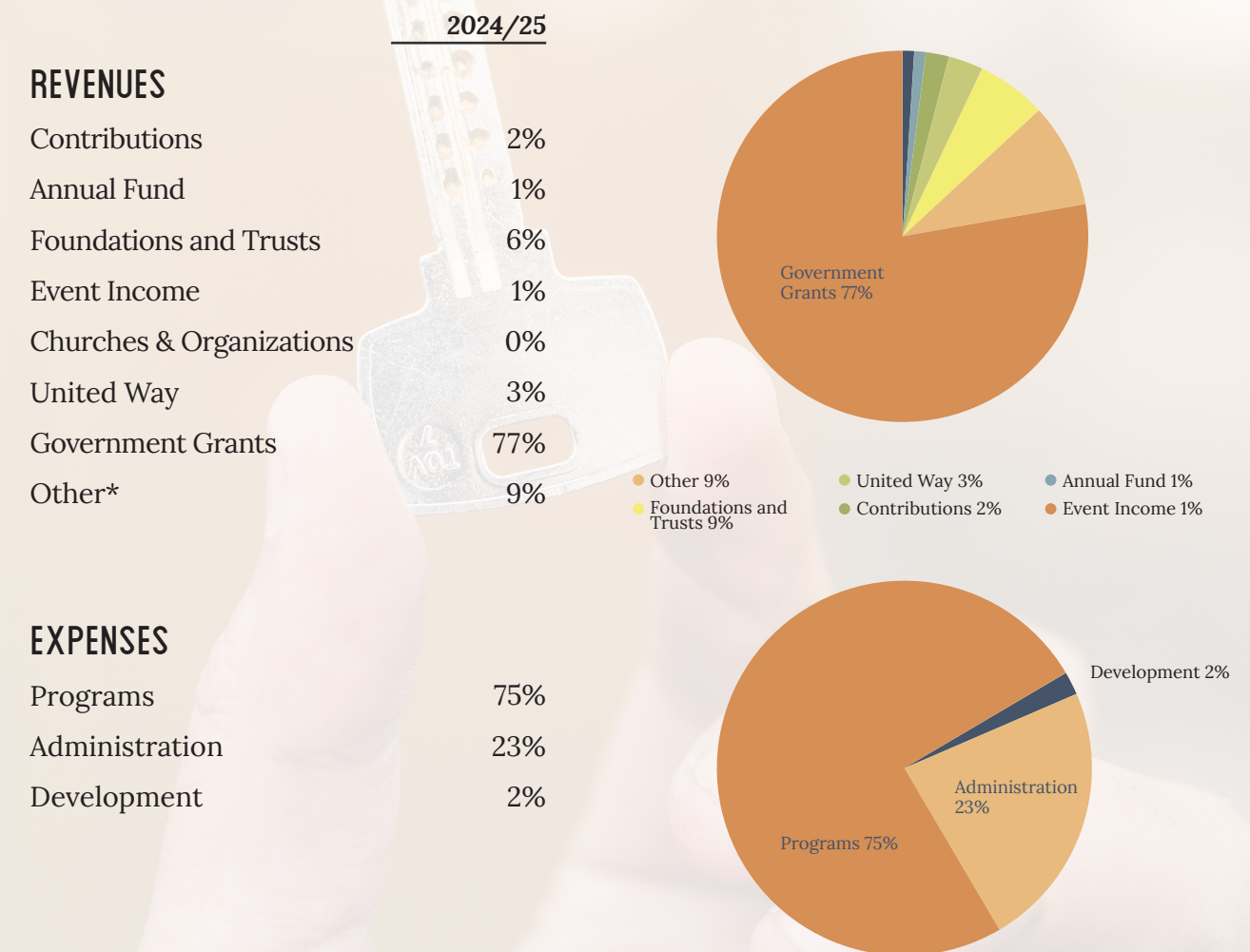
THE YEAR IN REVIEW

2025 FINANCIAL REPORT

In 2025, Welcome House had net assets of \$16,407,456, revenue of \$7,809,168 and expenses \$8,135,397.

The net loss for the year was offset by surplus carried forward from the prior year, as well as by WHO fundraising and interest earned on investments.

A Look at Our Revenues and Expenses



*Other represents proceeds generated from Welcome House's investment funds and program fees.

Note: The financial information provided are preliminary financial results for 2025 and may change slightly, once the 2025 audit is completed.

Thank you, GRACIOUS DONORS

Donations received Jan 1, 2025 - Dec 31, 2025

HERITAGE

(Gifts greater than \$25,001)

Greater Cincinnati Foundation Northern Kentucky Rest. Assoc. United Way

LIFE

(Gifts of \$10,001-\$25,000)

Honorable Order Of KY Colonel Michael F. Zalla Memorial Fund PFAU Foundation Reakirt Foundation The Andrew Jergens Foundation Toebben Company

HOPE

(Gifts of \$5,001 to \$10,000)

Aetna Better Health of Kentucky America's Home Place Inc. Brent and Judy Rouse Bruce Walters Fidelity Charitable Gift Fund Mark JordanMerus Foundation Model Property Development LLC Pat Hemmer Scripps Howard Foundation The Butler Foundation The Thomas J. Emery Memorial

ESTEEM

(Gifts of \$501 to \$1,000)

Barry and Lynda Menkhaus Bill Hemmer Courtney Hoffer Daniel Burr Darla and Lynn Shewmaker David Schuler Denise Griffin Donald and Mary Able Dr. Joseph Haas Ellen Baker First Christian Church Gabrielle Summe Jeff and Jami Pelini John and Diana Lovelace John Ritchie Jon Komplin Julie Mueller Julie Spanyer Julie Tapke Dusing Karen Stephens Kathy Symons Kenneth and Cecilia Dorger Marilyn McDermott Mark and Amanda Kolar Martin and Deanna Moon Martin and Melissa Mitchell Mary Gray Mary K. Lynch Michael Zumpano Nannette Bernales and Peter Rightmire Nicholas and Peggy Ziegler Rhinegeist Brewery Richard Epping Runyan Memorial Christian Church St. John Church Tamara Schmitz Terry and Maggie Sievers Thomas and Marilyn Feldman

SPIRIT

(Gifts of \$1,001 to \$5,000)

Alison Brands Rice Amy Sutter Apartment Assoc. Outreach, Inc. Augur Metal Products Barbara Leonard Bob and Gerri Wenert Brad Drew Brian Dickman Building Crafts, Inc. Bunches Of Bows Carl and Bonnie Hosea Charles and Diane Hammond Charles and Joyce Tappan Charlotte Read Cheryl Johnson Crane Fund for Widows and Children Dick and Jeanne-Marie Tapke Diocese of Covington Donald and Sue Corken Jr. Dressman Benzinger & LaVelle PSC Duke Energy Foundation Ecollectic Jewelry Designs, LLC Edelweiss Foundation Edward and Mary Lou Vogel Fidant Wealth Partners First Christian Church Covington Fischer Single Family Homes II, LLC Hollaender Structural Fittings Humana Jim Lazzari Jim Schmidt John and Carrie McCoy John Lorenz Karen Oswald Karen Schmidt Karen Toll Kroger Community Rewards Lisa and Timothy Burks Margaret Bertelsman Matthew Brands MegaCorp Logistics, LLC Michael and Teresa Brennan Nancy Tretter O'Rourke Wrecking Company Philip Lachman Sr. Richard Goettle Inc. Richard Mayer Robert and Carol Griffin Sinkula Investments St. Agnes Church St. Elizabeth Hospital Stephen and Jennifer Bailey Suzanne Lorenz The Blackbaud Giving Fund The David J. Joseph Company The E.W. Scripps Company The Western & Southern Life Insurance Company The Wyler Family Foundation Tina Van Sant Tom and Elizabeth Heist Trinity Episcopal Church Turner Construction United Way of Kentucky Valley Interior Systems Inc. Will Gregg III YMCA of Greater Cincinnati Zion Solutions Group

STABILITY

(Gifts of \$100 to \$500)

A-1 Driving School LLC Aidan Ross Alan and Janet Hartman Alex Rechtin Alexandria Community Church Allison Eastman Amanda Adkins-Ricci Amanda Hall Amanda Orocio Amy Dye Andrea Breen Angela Kiger Angie Meisman Ann Hemmer Ann Hicks Ann Silvers Anna Milburn Anna Rengering Asaph Consulting LLC Ashwin Nariani Barb Carpenter Barbara Rettig Barbara Shaw Ben and Agnes Wessels Betsy Bartone Bob and Emily Berning Bonfire Brenda Israel Brenda Staggs Brenda and Carol Rieger Buechner Haffer Meyers & C. William and Mary Blewett Carla Cain Carol and Harry Sparks Carol Ann and George Taylor Carol Fausz Carol Horn Carol Smith Carole Lonneman Catherine Jetter Cathy Schmidt Chad Metzger Charlene Bankemper Charles and Karen Bramwell Charlie and Karen Nieman Charlotte Wohlwender Chris and Danielle Cusentino Chris and Julie Dupont Chris Flottesmesch Chris Garrett Christina Weber Christine Gamble Christopher and Debra Barnhart Christopher and Patty Heeb Cindi Sinkula Cindy Hassan Cindy Marks Clifford and Marilyn Perkins Jr. Constance Kramer Country Cruisers Car Club Inc. Courtney Kleier Curtis Ford CyberGrants Inc. Dale Hayes Dan Diorio Dan Fagel Dan Goetz Darlene Plummer Darrell Archer and Mary Ann Nestheide Dave and Linda Rechtin David and Catherine Bertke David and Jan Klocke David and Jane Spaulding David and Kathaleen Weyer David and Kathy Manning David and Suzanne Day David and Valerie Bowman David Crotty and Joan Von Handorf David Dean David Hursh David Miller David Pelgen Dean Tromans Deanne Huesman Deborah Cummings Debra Albin Debra Mineer Delilah and Dennis Huber Dell Sathe Dennis and Lorna Harrell Dennis and Rita Geiger Diana Knoebber Diane Feldman Diane Schweitzer Diane Timon Donald and Diana Bahr Donald Quinn Donna Bloemer Donna Woods Dorothy Rettay Doug and Linda Wisher Doug and Rhonda Stegman Douglas and Lisa Henkes Edward and Arlene Sparks Edward and Mary Manogue Edward Miles Edwin and Brittaney King Edwin and Lois Knochelmann Eilleen Kearns Elaine Semancik Elizabeth Damico Elizabeth Field Elizabeth Mousses Kalin Elizabeth Stewart-Pirone and Joe Pirone Ellen and Joe Roesel Ellen and John Zembrodt Ellen Donovan Ellen Mayleben Emily Lobert Emily Poling Emily Tillson Eric and Louise Canter Eric Wurzbacher Erin Goetz Ethel Ingalls Florence Christian Church Frederick Warren Gail Pennington Gary and Connie Cole Geoffrey and Michelle Leder George Whitton Gerald and Andrea Hardcorn Gerald and Barbara Johnson Gerald Sigl and Terry Hirschfeld Ginny Bolte Gregory and Diane Wehrman Gregory and Margaret Engelman Gregory and Patricia Blank Hanna Fleig Harold and Linda Vaughn Heidi Knochelmann Helaine Tasch Helen and Todd Shupe J and Ruth Bessler Jackson and Marian Cummins Jaime Mutter James and Hannelore Harris James and Florence Howard James and Gail Spence Jr. James and Jennifer Imbus James and Jo Ann Fedor James and Karen Cusentino James and Katherine Reeves James and Kathy Quast James and Lisa Lawson James and Mary Kersteiner James and Rebecca Bilbo James and Sylvia Liles Jamie Glavic Jan Davenport Jana Simms Janet Flerlage Janet Hackman Janet Mott Jean Sens Jean Zeck Jeanne Buring Jeff and Mary Shy Jeff Grayson Jena Wise Jennifer and Dick Manoukian Jennifer Deen Jennifer Jasper-Lucas Jerome and Noreen Linneman Jerome Kistner Jerry and Katherine Warner Jerry and Pam Lasita Jessicua Ritchie Jill and Don Rosing Jim and Ann Flood Jim and Lisa Bayne JoAnn Murphy Jodi Toft Joe and Julie Larger John and Barbara Rossi John and Elinor Comer John and Jackie Shea John and Jane Domaschko John and Karen Keiter John and Patricia Schilling John and Vickie Cimprich John Kruempelman Jon and Jane Votel Joseph Volker Joy Garrigues Judy and Bill Toebben Julia Heditsian Julie Heeb Julie Neuroth June Gaub Karen Bezold Karen Malott Karen Menke Karen O'Callaghan Karen Wachs Kathleen Rosing Kathleen Shields Kathryn Schaller and Kathleen Washam Kathy and Ken Woltermann Kathy Eubanks Kathy Janson Kathy Mueller Kathy Papp Kathy Tillson Kathy Payne Kathy Robinson Keith and Catherine Logsdon Keith and Judith Fortner Kellie Walsh Kenneth Scheffel Kevin and Carol Hemmer Kevin DeGroot and Rosalyn Schneider Kevin Lintz Kim Lampe Kim Reese Knights of Columbus Kokosing Construction Kremer's Market Kristen Inman Kristin Mayo Larry and Tina Royalty Lauren Edelen Lauren Garrett Lawrence and Dolores Losey Lawrence Brennan and Karen Enzweiler Leander Kiefer Lee and Marla Butke Leo and Vickie Hugenberg Lewis Adamkiewicz Libby Dermody Linda Carey Linda Miller Linda Nelson Lisa Beck Lisa Zalla Lori and William Dunsing Lynn Helfrey Lynn Stockholm Makenzie Greathouse Maple Street First Baptist Church Marci Grzelecki Marcia Kohorst Maria Arand Marianne Carr Marie Guthrie Mark and Catherine Guilfoyle Mark and Diane Linnemann Mark and Elizabeth Anderson Mark and Mary Ann Zalla Mark Bukala Martha Witt Martin and Kathleen Carvan Mary and Bart Brown Mary Ann Donoghue Mary Ann Krumpelmann Mary Bruggen Mary Carter Mary Gamstetter Mary Kay Fleming Matt and Amanda Meeker Matt and Mary Jean Klein Maureen Roderick Maureen Tierney Melanie Franks Melissa Radford Michael Alexander Michael and Andrea Tomasetti Michael and Evelyn Ruh Michael and Mary Higgins Michael and Mary Jo Whelan Michael and Melinda Sucher Michael and Suzanne Bish Michael Reynolds Michael Sketch Michelle Tibbs Mike and Ginny Sandfoss Molly Riehl Morgan Oakes Mother of God Church Nancy Bickel Nancy Bradley Nancy Staurovsky Neil and Susan Heppler Nicholas and Gloriette Winnike Nicholas and Peggy Gamble Norbert and Pauline Baumann Pam Rose Pam Stovik Pamela Sutthoff Patrick and Patricia Raverty Patrick Birrer Patrick Humphrey Paul and Adeline Throop Paul and Cindy Miller Paul and Jenny Hadorn Paul and Linda Davis Paul and Marianne Scobey Paul and Marybeth Meisenhelder Paul and Rose Lankisch Paula Zalla PayPal Giving Fund Peggy Chandler Peter Manczyk Phillip and Beth Rose Phyllis Kennedy Randy Wolf Ray Martodam Raymond Knueven Rebecca Bryan Boone Foundation Regina Boehmer Renaissance Charitable Foundation Richard and Barbara Traud Richard and Gail Michalack Richard and Mary Winn-Godar Richard Copp Richard Neuroth Rick and Carol Leyshock Rick and Cindy Frederick Robert and Deborah Rottman Robert and Janice Remmele Robert and Karen Lavelle Robert and Phyllis Noll Robert and Rebecca Brown Robert and Sallie Lotz Robert Buechner Robert Curran Robert Curtis Robert Knodle Robert Wallace and Susan O'Neill Robert Warnick Robert Zembrodt Roger and Mary Hehman Roger Grein Roger Schwartz Ronald and Emily Droege Ronald Brinkman Ruby Emmelhainz Rusty Sheehan Ruth Bamberger Ruth Miner Ryan Bihl Salesloft Accounting Sally Hayes Sally Pfetzer Sandy Grieme Scott and Janet Fedders Scott Knox Shannon Bailey Shannon Herald Sharon Graff Sharon Wilson Sherry Goodridge Sissy Kamer Sisters of St. Joseph the Worker St. Walburg Monastery Starr and Deborah Comstock Starr Printing Stephanie Burnside Stephen and Andrea Lorenz Stephen and Karen Wertz Steve and Marianne Fieger Steve Hegge Steven Kneipp Steven Rosh Susan Hodge Susan Oswalt Susan Porter Tamera Cook Tammy Waltermann Ted and Rebecca Reckers Ted Zalla Telagen LLC Terri Ciaramitara Terry and Karen Cady The Benevity Community Impact Fund Theresa Mohan Thomas and Barbara McDonald III Thomas and Donna Schomaker Thomas and Katie McGovern Thomas and Judith Wesseling Thomas and Lisa Tingley Thomas and Mary Lou Kordenbrock Thomas and Pat Huller Thomas and Sheila Hammons Thomas Bowers Thomas Damaree Thomas Drennen Jr. Thomas Noll Thomas Venditelli Thomas Willenborg Thomas Yocum Tim Smith Timothy and Beverly Frommeyer Timothy and Kirsten Auch Tom and Carol Rasp Tom and Vira Schmidt Tom Ault Tom Kelly Tony Vallandingham Tracy Butts Treina Bray Tyler Brown United Way of Greater Milwaukee United Way of South Central Michigan United Way of the Greater Dayton Area Victor and Kathleen Bean Vincent and Ann Stamp Virginia Strunk Walter Molony Wayne and Deborah Onkst Wilbert Ziegler William and Beverley Frederick William and Heather Quigley William and Helen Hanrahan William Remke William Scharf



WELCOME HOUSE, INC
Homeless to Home

1132 GREENUP STREET
COVINGTON, KENTUCKY 41011

(859) 431-8717
WELCOMHOUSENKY.ORG

