



# Ending Homelessness

Our mission  
is to provide  
a continuum

## ANNUAL REPORT

# 2023



of services  
that will end  
homelessness  
and promote  
stability for  
each person

We serve

Working to **end**  
**HOMELESSNESS**  
in **NORTHERN**  
**KENTUCKY**  
by guiding our clients  
FROM *housing*  
*uncertainty*  
TO **HOUSING**  
**STABILITY**

# ***MISSION & VISION***

Our vision is to be a leader in guiding clients from housing uncertainty to housing stability. We accomplish this through the services we provide- Homeless Solutions; Housing and Supportive Services; and Regional Services.

Our mission is to provide a continuum of services that will end homelessness and promote stability for each person we serve.

---

## ***OUR VALUES***

**COMPASSION:** We seek to understand without judgment each individual's unique environment and needs.

**ADVOCACY:** We believe in speaking on behalf of those without a voice; to participate in creating solutions to homelessness by building healthy communities through networking, service, capacity building and creating communities of support.

**INTEGRITY:** We serve our clients with warmth and compassion and never take for granted the generosity of our donors and volunteers.

**QUALITY:** We hold ourselves to the highest professional standards, which are reflected in the quality of our programs, our people, and in the communities we serve.

**LEADERSHIP:** We develop innovative and sustainable processes and programs focused on providing safe shelter and supporting the transition out of homelessness.

**COMMUNITY:** We foster community by creating opportunities for connection, relationship building, and belonging among those we serve, along with our neighbors, partners and employees.







# Letter from Danielle Amrine, CEO

Let us take a moment to reflect on something profound: the power we hold within ourselves to leave people better than how we found them.

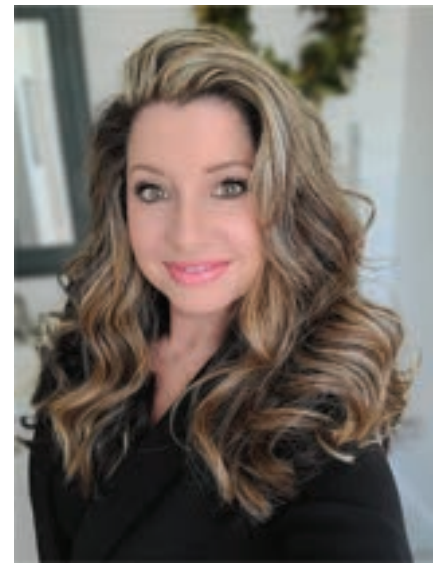
In a world often marked by chaos and uncertainty, it's easy to get lost in the shuffle, to forget the impact of our actions on those around us. But here, in this room, we are reminded of something fundamental—that each of us has the capacity to uplift, to inspire, and to transform lives.

At Welcome House, Inc., we understand this responsibility better than most. Every day, we open our doors to those in need, offering not just shelter, but hope. We provide a haven for families facing unimaginable challenges, offering them not just a place to rest their heads, but a chance to rebuild their lives.

But our mission extends far beyond the walls of our shelter. It's about more than just providing a roof over someone's head; it's about giving them the tools and support they need to thrive. It's about empowering them to write their own stories, to reclaim their dignity, and to dream of a brighter tomorrow.

And yet, we cannot do it alone. We rely on the generosity and compassion of people like you—the ones who understand the value of leaving people better than how we found them. Whether it's through your donations, your volunteer efforts, or simply your kindness, you play a vital role in our mission.

So, let us remember the words of Maya Angelou: "I've learned that people will forget what you said, people will forget what you did, but people will never forget how you made them feel." Let us strive to leave a lasting impression—not just on those we serve, but on the world around us.



Together, let us be the change we wish to see. Let us leave people better than how we found them.  
Thank you.

Sincerely,

A handwritten signature in black ink, consisting of a stylized 'D' followed by a series of loops and a final 'A'.

Danielle Amrine, CEO





## Homeless Solutions

### STREET OUTREACH

#### Northern Kentucky, Buffalo Trace Ad District, and Lake Cumberland Ad District

The Outreach Program is an interdisciplinary team whose goal is to bring emergency stabilization services to specific parts of our region. The outreach team's priority is to spend time searching for those experiencing homelessness and build relationships with them as we address physical and emotional needs. In addition, the team continues to knock down transportation barriers by meeting the program participants where they are in the community.

In 2023...

- Welcome House served 991 individuals through our Northern Kentucky, Buffalo Trace, and Lake Cumberland Street Outreach Teams.
- 955 Adults and 36 children were offered services through our Street Outreach Teams.
- Every person served by Street Outreach was offered services and access to food and resources.



### FRONT DOOR

The Front Door system provides accessibility to services for any person who feels they may qualify by completing a brief but thorough assessment. Assessments identify the potential program participant's need for assistance, referrals, resources, or connection to a scheduled initial appointment with a Service Coordinator.

In 2023...  
– 1,983 Individuals came through our Front Door program.

### DIVERSION

Welcome House works within the geographic areas to divert people from homelessness through interactive problem-solving conversations with the program participant. After a screening interview, participants will work with Welcome House staff to understand and explore solutions to their unique housing crisis.

In 2023...

- 28 Individuals were served through our diversion program.
- 46% Of those served were males and 46% were females 8% gender was not collected.

### SERVICE COORDINATION

The Service Coordination area provides assessments, outreach, case planning, financial education, budgeting assistance, housing counseling, employment support, and community referral services. Service Coordinators work directly with residents staying at Welcome House shelter, other local shelters as well as homeless or at-risk individuals and families. After participants obtain housing, they are offered additional in-home visits to help keep them on their targeted plan of self-sufficiency. Service Coordinators may provide additional support for up to six months. Case management can address a wide-range of situations including housing, applications for food stamps or medical insurance, budgeting, and case planning.

In 2023...

- 317 Individuals were given a service coordinator.
- 245 Individuals transitioned into permanent housing.
- 142 Households were served in Service Coordination, which included 59 children.



## Homeless Solutions (cont.)

### SOCIAL SECURITY OUTREACH, ACCESS & RECOVERY (SOAR)

The Social Security Outreach Program (SSO) uses the SOAR method to assist homeless or at-risk individuals with mental or physical disabilities to complete applications for Supplemental Security Income (SSI) or Social Security Disability Insurance (SSDI). Together with the Social Security Administration and Disability Determination Services, the program provides access to stable and permanent income, medical insurance, and social services coordination.

In 2023...

- 31 Total people were served through our SOAR program.



## Shelter Services

### WOMEN'S AND CHILDREN'S SHELTER

The Welcome House Shelter for Homeless Women and Children provides a safe place to stay for approximately 35 homeless women and children each night. Residents of the Shelter work with Service Coordinators and other Welcome House staff to increase income and access affordable housing while removing any barriers to success. While working toward stability, program participants have a safe place to live, nutritious meals, hygiene supplies, and other assistance needed.



In 2023...

- 251 Women and children were served in our shelter, which included 73 children.
- 41% Of those children were under the age of 5 years old.
- A total of 177 households were served in the shelter, totaling 11,870 nights of service.



### FAMILY PROMISE

Family Promise aims to change the lives of homeless and low-income families in Northern Kentucky by providing shelter in an effort to help them reach sustainable independence. Through the Family Promise module, we can shelter two heads of household families.



In 2023...

- Family Promise of Northern Kentucky is the only family shelter in Northern Kentucky where we can shelter full families (dad, mom, and children) so they do not have to be separated.
- 52 Individuals were served through Family Promise, 32 were children.
- Family Promise was provided meals and in-kind donations from various local churches.





## ***Shelter Services (cont.)***

### ***VA (VETERAN AFFAIRS) SHELTER***

Welcome House can shelter up to 10 veterans experiencing homelessness. The veterans we serve have many complex and unique needs. We encourage flexibility within our program by eliminating barriers to admission of the shelter and continually engaging veterans in our services. Residents of the Shelter work with a dedicated Service Coordinator, the local VA, and other Welcome House staff to increase income and access affordable housing. In addition, the Service Coordinator would discuss other varying eligibility requirements upon assessment.

In 2023...

- A total of 35 males were sheltered in our VA program.
- The VA provides three full meals a day to residents.
- All residents were offered wrap-around case management services from Welcome House and services from the local VA affiliate.

## ***Housing and Supportive Services***

### ***RAPID RE-HOUSING (RRH)***

Rapid re-housing quickly connects families and individuals experiencing homelessness to permanent housing through a tailored package of time-limited financial aid and targeted supportive services. In addition, the Rapid Re-Housing program would discuss eligibility requirements upon assessment. Welcome House offers Rapid Re-Housing programs in Northern Kentucky, the Lake Cumberland Ad District, and the Buffalo Trace Ad District.

In 2023...

- 155 Individuals were served in our Rapid Re-Housing Program.
- 51 Of the participants were children.
- It took an average of 42 days to obtain housing.



### ***PERMANENT SUPPORTIVE HOUSING (PSH)***

Permanent Supportive Housing is a combination of services and housing. Specifically, it supports people with serious mental illnesses or other disabilities who need professional care, advocacy, and assistance to live stably in their communities. After meeting eligibility requirements, program participants have access to services including partial to full ongoing financial rental and utility assistance. Other services can include service coordination, substance abuse or mental health counseling, advocacy, and help in locating and maintaining employment.

In 2023...

- 16 individuals were served through our PSH program. 12 adults and 3 children.
- 100% of the program participants maintained or obtained permanent housing.
- 100% increased their total income.



## *Housing & Supportive Services (cont.)*

### *GARDENS AT GREENUP*

The Gardens at Greenup offers affordable, stable housing for families, consisting of 20 units containing 2-4 bedroom apartments. This supportive housing program aims to strengthen families by providing affordable, subsidized housing with on-site support services, including Service Coordination, education planning and support, career planning, financial literacy, life skills training, and childcare. The program is unique in setting a holistic standard for self-sufficiency, including personal growth development, family activities, and building a community of support. Requirements for residency include having custody of at least one child and willingness to actively engage with the Service Coordinator for family case planning and goal development.



In 2023...

- A total of 78 individuals were served at Gardens at Greenup, 22 adults and 56 children.
- 54% Of those children were between the ages of 5-12 years old.
- A total of 22 households were served at Gardens at Greenup.



### *HOME TENANT BASED RENTAL ASSISTANCE (TBRA)*

The TBRA program provides payments to make up the difference between what a household can afford to pay for housing and the local rent standard. These funds may provide assistance to help pay monthly rent and utility costs for up to 24 months. TBRA would discuss other varying eligibility requirements upon assessment.

In 2023...

- 58 Individuals were served through our TBRA program.
- 67% Gained access to mainstream benefits, including health care.
- 90% Exited to permanent housing.

### *REPRESENTATIVE PAYEE*

This program assists persons with mental or physical disabilities by directly managing their income. Welcome House acts as a financial agent (called a payee) for program participants without an appropriate adult in their life to fulfill this role. Payees pay rent, utilities, and other monthly bills on the program participants' behalf. The overall results of the program focus on improved quality of life and stabilization of a vulnerable population. Program participants often transition from living on the streets with debilitating illnesses to having an income, housing, medical coverage, and the support necessary to lead a more independent life. Welcome House also offers Representative Payee services in Lexington, Kentucky.

In 2023...

- 94 Total individuals were served through our Representative Payee Program.
- \$ 981,958.80 Total funds were managed through our Representative Payee Program.





# Welcome House Achievements: 2023

## *Expansion of Shelter Services*

One of the cornerstone achievements of Welcome House, Inc. in 2023 was the expansion of their shelter facilities and administration building. Recognizing the growing need for safe, reliable housing, Welcome House ran a successful Capital Campaign which helped to increase capacity by 50%. This Shelter is not just places to sleep, but to provide comprehensive support services, including counseling, job training, and increased access to mainstream benefits. In April 2023, Welcome House achieved a significant milestone with the grand opening of the brand-new facility that consolidates all programs and services under one roof. This state-of-the-art center includes dedicated spaces for the Shelter for Homeless Women, Children, and Families, making it a comprehensive hub for support and resources. The Welcome House's holistic approach ensures that those in need receive the care and services essential for their recovery and reintegration into society.



## *Major Funding Achievement*

In 2023, Welcome House secured a groundbreaking funding by receiving \$5,856,843 from HUD's competitive Special Notification of Funding Opportunity (SNOFO) competition. These funds are specifically targeted at reducing and eventually ending rural and unsheltered homelessness in their communities. This substantial grant has enabled the organization to enhance its outreach programs, improve shelter facilities, and develop new initiatives aimed at addressing the unique challenges faced by the rural homeless population throughout the entire state of Kentucky.



## *Looking Ahead*

As Welcome House reflects on the successes of 2023, the organization remains steadfast in its mission to serve the homeless with compassion and efficacy. The achievements of this year are a solid foundation for future initiatives aimed at creating a community where everyone has a place to call home. With continued community support, innovative programs, and a commitment to advocacy, Welcome House is poised to make even greater strides in the coming years.



# LETTER FROM OUR BOARD CHAIR

Dear Partners,

What can be achieved in a year? In the case of Welcome House, quite a bit. It never ceases to amaze me the power that determined, caring individuals can have on communities.

In just one year...



The dynamic of our board is evolving as we welcome new members. We have incredible individuals who lend their time and talents. They are deeply passionate about the work of the organization and are always willing to roll up their sleeves to provide suggestions and support around all of the great initiatives taking place. I'm so thankful for this group and proud to be doing the work alongside you and the talented team at Welcome House.

We're enjoying immense growth and expansion within the organization. In 2023, Welcome House officially moved into a new building! All programs and services are now under one roof, making them easier to access and creating efficiencies for staff. The organization has also expanded into new regions across the Commonwealth – Green River, Gateway, Buffalo Trace and Lake Cumberland are now included in the areas we serve. It will be amazing to see the impact this will make for our unhoused community members across the great state of Kentucky in 2024.

We are making an impact. I cannot say enough wonderful things about the staff at Welcome House. In attending participant awards and interact with various staff members throughout the year, I can honestly say that there is not a more hard-working or passionate group of people out there committed to eliminating homelessness. In fact, this incredible team can boast a 70% transition into stable housing for all programs and services – a fact showcasing this group's dedication to fulfilling our housing security mission.

I want to express profound gratitude to the staff at Welcome House. You provide hope to so many who have fallen on hard times. You provide a path forward and resources to help them get back on their feet. You are the light in a time of darkness. I am thankful to have witnessed your ongoing commitment to the mission of Welcome House and look forward to seeing what the next year has in store for us.

Thank you.

Sincerely,

Lauren Vogel  
Board Chair

## **2023 Board Members**

Lily Ambrosius  
Chris Bauer  
Chris Brison  
Laura Canter  
Elishia Chamberlain

Brad Drew  
Chris Francis  
Katie Hehman  
Emily Heidt  
Alyse Hoffer  
Ellee Humphrey

Connie Kremer  
Lucy Lane  
Amanda Meeker  
Marie Schenkel  
Joseph Robinson  
Paula Rottinghaus

Katherine Simone  
Jason Spaulding  
Travis Taylor  
Lauren Vogel  
Randi Wise



# volunteers

Volunteers are essential to the success of Welcome House. Without the support and help from numerous individuals and groups, we would not be able to provide the level of service that we strive for.



In 2023, Welcome House had 782 total volunteers. Out of these 782 individuals, 256 volunteered in direct services and 526 in indirect services. These individuals contributed a total of 2,535 hours of volunteer work to Welcome House which is the equivalent of \$72,248 in cost-free assistance.

## In-Kind Donations

In 2023, Welcome House received \$87,126.08 in food and non-food donations. Because of your generous donations, hygiene was no longer a barrier to our client's success as they went into job interviews, the holiday season was a time of joy rather than stress, each client was able to enter their new home with a fresh pillow, bedding, and a set of dishware. Having these items donated not only brings joy to our clients, it sets them up for success!

Food donations continued to make an impact in 2023. Essential items donated to our shelter, such as cereal, pasta sauce, and canned soups, allowed our staff and volunteers to create delicious meals for the residents all year round. Meal donors provided hundreds of home cooked meals, allowing us to stretch your shelf-stable donations even further! Other food items helped fill the gaps for clients who may have missed a meal or have growing children who eat more than their SNAP benefits provide.

Our donation wish lists can be found at [welcomehouseky.org/get-involved/wish-list-items](http://welcomehouseky.org/get-involved/wish-list-items).



## Welcome House Outreach

Welcome House Outreach, also referred to as the WHO, has been an auxiliary fundraising group for Welcome House since 1990. The WHO organizes and hosts the annual Summer Sunday event held the first Sunday in August and the WHO Shower help in April. The group is comprised of approximately thirty women who donate their time and energy toward making these events and their volunteer work successful. In 2023, the WHO raised over \$70,000 for Welcome House! In addition to their event support, the WHO members also contribute frequently to our in-kind donation efforts.

These women have been a strong source of support over the years and we are extremely thankful for their consistent support.



Amy Ryan  
Emily Berning  
Lisa Zalla  
Rebecca Reckers  
Ann Hemmer

Karen Cady  
Laura Canter  
Sarah Hemmer  
Ashley Simmons  
Kasey Kleem

Louise Canter  
Sarah Miles  
Brittaney King  
Katie Hehman  
Lynn Faulkner

Terri Ciaramitaro  
Connie Cole  
Kristen Inman  
Pam Rose  
Valerie Back

Elizabeth Heist  
Kristin Turner  
Pat Hemmer

# Events

## MARDI GRAS

Mercedes Benz of Fort Mitchell in partnership with the Northern Kentucky Restaurant Association (NKRA) presented the 32nd Annual Mardi Gras for Homeless Children on Tuesday, February 21, 2023 at the Northern Kentucky Convention Center. This spectacular event featured over 50 local food and beverage vendors, live music, and lots of silent auction prizes and more. Proceeds from Mardi Gras went to Welcome House and two other nonprofits. In 2023, Welcome House raised over \$40,000 to help meet the needs of children staying at the Welcome House Shelter.



**Queen Sponsor:** Greenhouse Renovation Services Inc.,  
Hollaender Co., Turner Construction,  
Welcome House Board of Directors,  
YMCA of Greater Cincinnati

**Jester Sponsors:** Fidant Wealth Partners,  
Sinkula Investments

**Platinum Sponsors:** John & Diana Lovelace & Friends, Julius C. Howe  
Asphalt & Sealing, Richard Mayer & Friends

**Shared Sponsor:** The Chef's Warehouse

## ANNUAL HOUSEHOLD SHOWER



Playing off the idea of a traditional bridal shower, this event is hosted by the Welcome House Outreach (WHO) with the purpose of bringing in-kind donations to Welcome House for families transitioning from homeless to home. In 2023, the Shower speaker was Jenn Jordan, co-host of the top-rated Morning Show with Jeff and Jenn on Q102 for over twenty years! Attendees brought new-home gifts, such as comforter sets, bath towels, crock pots, and much more. These items are

extremely important as our clients move into stable housing. Instead of spending their limited funds on basic household necessities, they are able to save this money for their down payment, furniture, or any number of other moving and living expenses.



## SUMMER SUNDAY

The 11th annual Summer Sunday event, hosted by the WHO, was held in-person on Sunday, August 6th, 2023. Guests were able to enjoy great food, live music, and several raffle items and cash prizes. Money raised by the event allows Welcome House to continue operating the Shelter and provide the continuum of services to meet clients where they are in their journey of homelessness. This is the only fundraising event where ALL revenue goes directly back to Welcome House and the clients we serve. In 2023, the event raised over \$70,000 which helped provide 15,366 bednights in our Shelter for Homeless Women and Children.

Special thanks to our 2023 Summer Sunday sponsors, which include:

**Platinum Sponsor:** Gates

**Gold Sponsors:** Baird Tapke Group, Central Bank & Trust Co., Mastin Construction, Turner Construction

**Silver Sponsors:** DBL Law, Fidant Wealth Partners, First Financial Bank, John & Juanita Griffin,  
Pat Hemmer, MD Pizza LLC, Sibcy Cline Realtors, St. Elizabeth, Toebben Companies



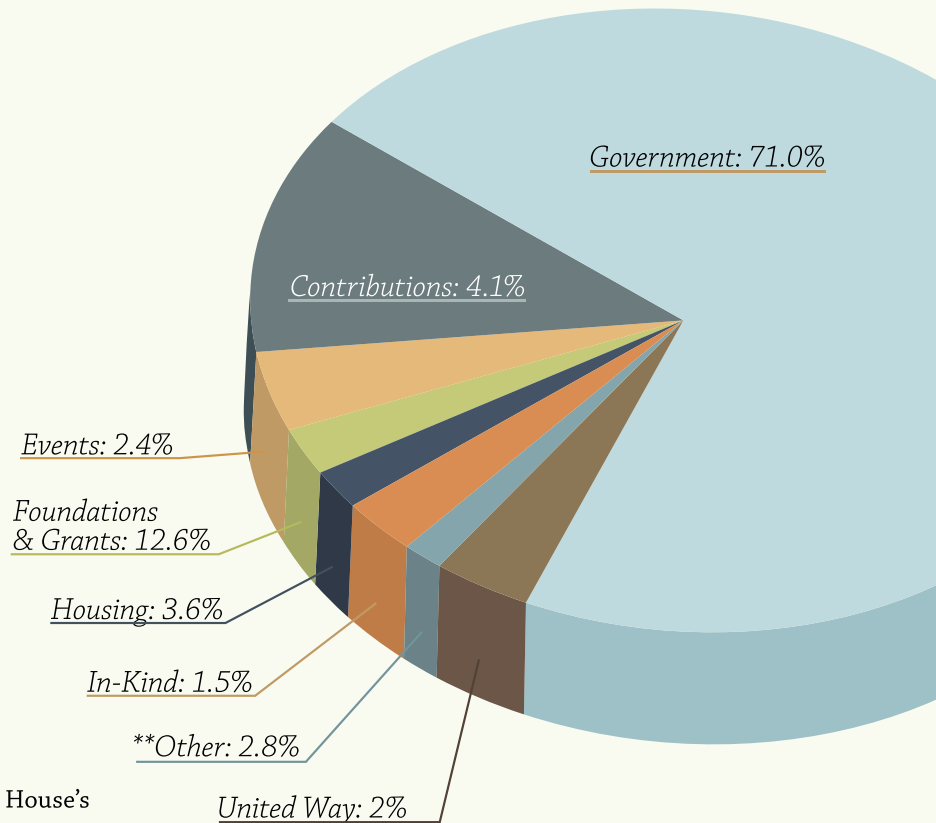


In 2023, Welcome House had net assets of \$13,952,412, revenue of \$6,589,269, and expenses of \$6,468,593.

\*Net operating surplus reported is due to unrealized gains reported on investment funds held.

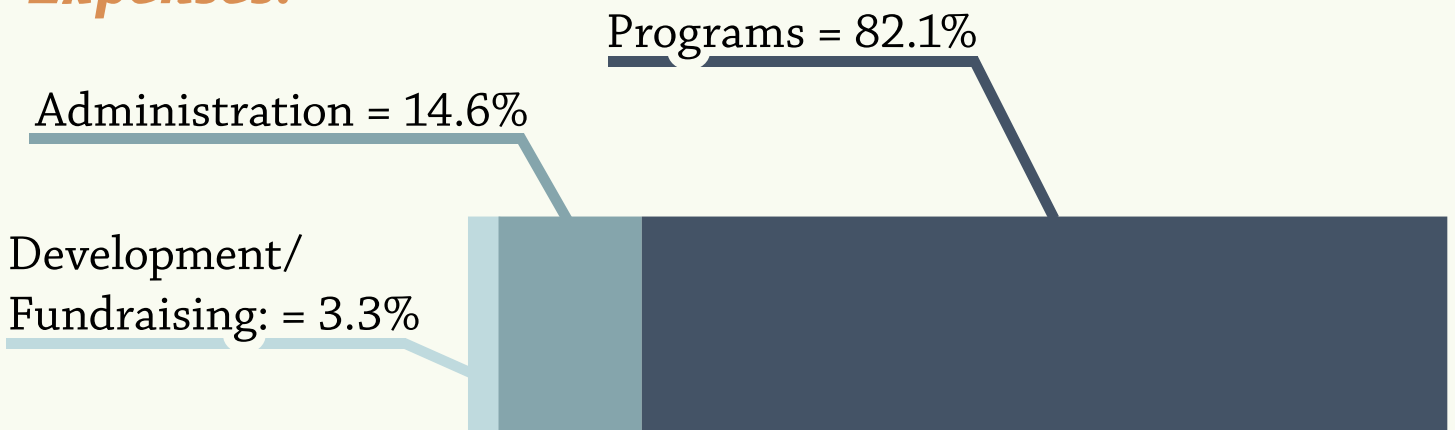
## Revenue:

Contributions	4.1%
Events	2.4%
Foundations & Grants	12.6%
Government	71.0%
Housing	3.6%
In-Kind	1.5%
Other	2.8%
United Way	2.0%
<b>TOTAL:</b>	<b>100%</b>



\*\*Other represents proceeds generated from Welcome House's investment funds, program fees and rental income.

## Expenses:



# donations

## HERITAGE

### (Gifts greater than \$25,001)

PNC Financial Services  
The R.C. Durr Foundation, Inc.  
United Way

## LIFE

### (Gifts of \$10,001 to \$25,000)

PFAU Foundation  
The Andrew Jergens  
Foundation  
The Butler Foundation

## HOPE

### (Gifts of \$5,001 to \$10,000)

America's Home Place Inc.  
Brent and Judy Rouse  
Bruce Walters  
Fidelity Charitable Gift Fund  
Gary Rosing  
Gates Industrial Corporation  
Foundation  
Horizon Community Funds  
Pat Hemmer  
Ronald Turner  
Scripps Howard Foundation  
St. Agnes Church  
The Benevity Community  
Impact Fund  
The Thomas J. Emery Memorial

## SPIRIT

### (Gifts of \$1,001 to \$5,000)

Alison Brands Rice  
Alyse Hoffer  
Anthem, Inc.  
Apartment Association  
Outreach, Inc.  
Augur Metal Products  
Barbara Leonard  
Carl and Bonnie Hosea  
Charles and Diane Hammond  
Charlotte Read  
Cincinnati Chrome Divas  
Comprehensive Health  
Management/Wellcare  
CyberGrants  
Dennis and Patty Van Arsdale  
Dick and Jeanne-Marie Tapke  
Diocese of Covington  
Dominos  
Dressman Benzinger &  
LaVelle PSC  
Ecollectic Jewelry Designs, LLC  
Edward and Mary Lou Vogel  
Emily Detmer-Goebel  
Fidant Wealth Partners  
Gerald Benzinger

Gloria Dei Lutheran Church  
Hebron Lutheran Church  
Highland United  
Methodist Church  
Honorable Order Of KY  
Colonels  
Hub+Weber  
Humana  
Jeffrey Epplen  
Joe and Ginnie Schmidt  
John and Diana Lovelace  
John and Juanita Griffin  
Julius C. Howe Asphalt &  
Sealing Company

Karen Schmidt  
Karen Stephens  
Kroger Community Rewards  
Margaret Bertlesman  
Mastin Construction Inc.  
Matthew Brands  
Michael and Teresa Brennan  
Mother of God Church  
Network For Good  
Paul Edgett  
Peggy Brewer  
RDI Corporation  
Regina Bakery LLC  
Richard Copp  
Richard Epping  
Richard Mayer  
Richard Tapke  
Ron Rohling  
Sinkula Investments  
St. Timothy Parish  
Stephen and Jennifer Bailey  
Strategic Employee Benefit  
Sue Corken  
The Joe Burrow Foundation  
The Marge & Charles Schott  
Foundation  
The Wyler Family Foundation  
Tim Waters  
Toebben Company  
Tom and Elizabeth Heist  
Trinity Episcopal Church  
Turner Construction Co.  
YMCA of Greater Cincinnati

## ESTEEM

### (Gifts of \$501 to \$1,000)

Amy Redmond  
Barnes Insurance Group  
Brian Dickman  
Cheryl Johnson and Jerry  
Rapien  
Church of the Blessed  
Sacrament

Courtney Kleier  
David Pelgen  
Delta Dental of Kentucky  
Don Able  
Elishia Chamberlain  
Gabrielle Summe  
George & Mary Budig Family  
Foundation  
Jacob Fisher  
Jim Lazzari  
John and Carrie McCoy  
Jon Komplin  
Julie Spanyer  
Julie Tapke Dusing  
Kathy Kaelin-Symons  
Kenneth and Cecilia Dorger  
Laura Canter  
Martin and Deanna Moon  
Mary Gray  
Model Property Development  
LLC  
Molina Healthcare  
Ms. Mary K. Lynch  
National Philanthropic Trust  
Patrick Lonneman  
Robert Berning  
Robert Linnell  
Runyan Memorial Christian  
Church  
St. John Church  
Steve and Mary Ellen Elsbernd  
The Blackbaud Giving Fund  
The E.W. Scripps Company  
The Western & Southern Life  
Insurance Company  
Thomas and Marilyn Feldman  
Tim Lichter  
William and Lynn Hemmer  
William Remke

## STABILITY

### (Gifts of up to \$500)

A-1 Driving School LLC  
Aaron Stapleton  
Adam Dan  
Adam McNeely  
ADM (Wild Flavors Inc.)  
Aime Marsh  
Al Neyer Community  
Foundation  
Alice Ridiman  
Allison Eastman  
Amanda Couch  
Amanda Mchargue  
Amanda Meeker  
Amazon Smile-Year End  
Cleanup 2020

Ammie Walter  
Mr. and Mrs. James W. Spence Jr.  
Andrea Breen  
Angela Kiger  
Angie Meisman  
Anita Tracy  
Ann Burns  
Ann Hemmer  
Anna Rengering  
Anne Donnermeyer  
Anthony and Kelly Bitter  
Archer Daniel Midland Company  
Asaph Consulting LLC  
Audrey and Bob Merrill  
Barb Carpenter  
Barbara Rettig  
Barbara Shaw  
Barry and Brenda Hartman  
Becky Scheeler  
Bernie and Ann Beck  
Bernie Wesselman  
Bertha Neltner  
Beth Rose  
Betsy Bartone  
Bob Lutkenhoff  
Bonfire  
Bonnie Riach  
Brad Drew  
Brad Elkowitz  
Brandy Lovensheimer  
Brenda and L Israel  
Brian and Carol Rieger  
Brian and Michaela Van Arsdale  
Bright Funds  
Bryant and Dawn Ramirez  
Bullittsville Christian Church  
C. William and Mary Blewett  
Carl Allison Jr.  
Carol Alverson  
Carol Fausz  
Carole Ewald  
Catherine Conniff  
Catherine Hellmuth  
Catherine Jetter  
Catherine Skyrn  
Cathy Schmidt  
Charlene Rasche  
Charles and Pamela Schneider  
Charlie and Ginny Yancey  
Cheryl Seta  
Cheryl Tuschong  
Chris Brison  
Chris Francis  
Christopher and Debra Barnhart  
Christopher and Patty Heeb  
Christopher Bauer  
Christopher Kirby

*The contributions listed below are funds received above and beyond funds given through government agencies and pass-through dollars. Every attempt was made to include all individuals/groups who made a contribution to Welcome House in 2023. Please forgive any inadvertent misspellings or omissions. WE ARE GRATEFUL FOR YOUR SUPPORT!*

## STABILITY cont. (Gifts of up to \$500)

Cindi Sinkula	Ed and Carol Muench	Holly Cronin	John Eldridge and Ann Ruttle
Circle Of Faith	Mr. and Mrs. Eddie Lampkin	Impresa Network Corporation	John Kruempelmann
Col Owens and Milly Diehl	Edward and Arlene Sparks	J and Ruth Bessler	John Lorenz
Connie Kremer	Edward and Mary Manogue	J. Victor and Kathleen Bean	John Rasp Jr.
Constance Kramer	Edwin and Lois Knochelmann	Jackson and Marian Cummins	John Young
Cora Bowling	Eilleen Kearns	Jacob Pez	Mr. and Mrs. John Zembrodt
Core5 Industrial Partners LLC	Elaine Cetrulo	Jake and Tracy Wilson	Jon and Jane Votel
Country Cruisers Car Club Inc.	Elaine Semancik	James and Hannelore Harris	Joseph Volker
Dale Hayes	Elizabeth Kalin	James and Amy Wright	Josiah Young
Dan Diorio	Elizabeth Rosplock	James and Florence Howard	Jude Hehman
Dan Fagel	Elizabeth Stewart-Pirone and	James and Jennifer Imbus	Judith Cahill
Daniel and Elaine Goetz	Joe Pirone	James and Kathy Quast	Judith Kinman
Daniel Burr	Elks No. 273 Ladies Auxiliary, Inc.	James and Lisa Lawson	Judith Schilling
Daryl Hauck	Ellee Humphrey	James and Mary Kersteiner	Judith Shields
Dave and Betty Core	Ellen Baker	James and Rebecca Bilbo	Judy Griffin
Dave and Linda Rechten	Emily Harmeling	James Cole	Julia Heditsian
David A. and Kathleen S. Bray	Emily Heidt	James Cusentino	Julia Koenig
David Agard	Emily Lobert	James Wells	Julie and Elmer Myers
David and Amanda Moore	Emily Wherle	Jan Davenport	Julie Dailey
David and Barbara Hausladen	Emily and Bob Berning	Janet Flerlage	Julie Mueller
David and Mary Dean	Employers Resource Association	Janet Hackman	Julie Neuroth
David and Jane Spaulding	Eric Neils	Janet Rice	K Turner Legal Practice
David and Kathy Manning	Eric Wurzbacher	Janice Coppage Mortenson	Karen and Gary Smith
David and Suzanne Day	Ethel Ingalls	Family Fund	Karen Malott
David and Valerie Bowman	Eugene and Rosanna Ardine	Janice Remmele	Kathaleen and David Weyer
David Crotty and Joan Von	First Christian Church	Jaro of Kentucky Inc.	Katherine Botos
Handorf	First Christian Church Covington	Jason and Julie Enzweiler	Katherine Reeves
David Hursh	First Presbyterian Church	Jason Spaulding	Katherine Simone
David Kasanicky	Frontstream	Jean Zeck	Katherine Vest
David Miller	Gail Pennington	Jeanette Grothaus	Kathleen Mahannah
Deanna Winter	Gale Bernardon	Jeannie McCoy	Kathleen Rosing
Deborah Cummings	Gary and Mary Jeanne Hampton	Jeannine Ives	Kathleen Terlau
Debra Suriano	Gary and Mary Massie	Jeff and Jami Pelini	Kathryn Schaller and Kathleen
Debra Wash	Gary and Sandy Peddicord	Jeff and Krisina Midlam	Washam
Delilah and Dennis Huber	Gary Schoepf	Jeff Grayson	Kathy and Ken Woltermann
DeLisa Green	George and Donna Mezera	Jeff Lucas	Kathy Eubanks
Denise Griffin	George Whitton	Jeff McDowell	Kathy Janson
Dennis and Lorna Harrell	Gerardine Brown	Jena Dawson	Kathy Mueller
Dennis and Michele Kelley	Ginny Bolte	Jennifer Kubina	Kathy Papp
Diana Johnstone	Give Lively Foundation	Jennifer McGlasson	Kathy Payne
Diana Knoebber	Global Charitable	Jerry and Katherine Warner	Kathy Robinson
Diane and J. William Martin	Gordon Jones	Jerry and Kathy Kasselmann	Kathy Summe
Diane Bey	Graham Klein	Jill and Don Rosing	Katie Hehman
Diane Feldman	Greater Cincinnati Foundation	Jill Hallahan	Katie Mcpherson
Diane Schweitzer	Greater Cincinnati Planned	Mr. and Mrs. Jim Eck	Keith and Catherine Logsdon
Dick and Jennifer Manoukian	Giving Council	Jim and Lisa Bayne	Keith and Judith Fortner
Don and Michelle Long	Gregory and Diane Wehrman	Jim Berling	Kelsey Hamilton
Don Franklin Chevrolet, Buick,	Gregory and Margaret	Jo-Ann Goodhew	Ken and Sandra Krumpelman
& GMC, Inc.	Engelman	Joanne Basse	Kenneth and Janice Roenker
Donald and Diana Bahr	Harold and Elizabeth Trouten	Joanne Mullen	Kenneth and Mary Goldsberry
Donald Grigsby	Harold and Linda Vaughn	Joe and Sheila Gray	Kenneth Atwood
Donna Esposito	Heartland Bank Community	John and Barbara Rossi	Kenneth Scheffel
Donna Kunkel	Foundation	John and Catherine Nienaber	Kevin and Carol Hemmer
Doug and Linda Wisher	Heather Cole	John and Dana Toeppen	Kevin Lintz
Doug and Rhonda Stegman	Heidi Martin	John and Jane Domaschko	Kimberly Good
Douglas and Lisa Henkes	Highland Products LLC	John and Patricia Schilling	Kokosing Construction
Dr. Joseph Haas	Hollaender Structural Fittings	John and Vickie Cimprich	Kremer's Market



# donations

## STABILITY cont. (Gifts of up to \$500)

Kristin Schroeder	Mary Lynn Lampke	Randi Wise	Steve Hegge
Kyle Brabender	Mary Pat Carter	Ray Martodam	Steve and Laura Izor
Kylie Lykins	Mary and Jeff Shy	Regina Boehmer	Steven Long
Larry and Tina Royalty	Matt Schamer	Richard and Barbara Traud	Stewart Katz
Lauren Ahr	Matthew Hollenkamp	Richard and Gail Michalack	Stoney's Frame Shoppe and Gallery
Lauren McRae	Maureen Hannon	Richard and Mary Winn Godar	Susan Handorf
Lauren Vogel	Maureen Roderick	Rick and Carol Leyshock	Sylvia Troescher
Lawrence and Mary Ann Tiemeier	Maureen Tierney	Rita Carpenter	Tammy Waltermann
Lawrence Blacker	Mauren Gerner	Rita Ferguson	Ted and Rebecca Reckers
Leo and Vickie Hugenberg	McD Concrete Enterprises LLC	Rita Hopper	Ted and Tamara Kluemper
Leslie Lawson	Megan Jansen	Robert and Carol Griffin	Terri Heiert
Leslie Taylor	Melanie Crabtree	Robert and Cathy Stevens	Terry and Maggie Sievers
Leslie Thomes	Melissa Helderbrand	Robert and Deborah Rottman	Terry Hirschfeld and Gerald Sigl
Libby Dermody	Melissa Webster	Robert and Diane Hoffer	The Home of Opportunities and Dreams
Lillian Ambrosius	Michael and Carla Kursell	Robert and Karen Lavelle	Theresa Cunningham
Linda Carey	Michael and Carol Landwehr	Robert and Maryann Grimm	Theresa Mohan
Linnemann Funeral Homes	Michael and Mary Higgins	Robert and Rebecca Brown	Thomas and Barbara McDonald III
Lisa Clark	Michael and Mary Jo Whelan	Robert and Sallie Lotz	Thomas and Donna Schomaker
Lisa Morrow	Michael and Melinda Sucher	Robert Curtis	Thomas and Janet Mentrup
Lori Boyd	Michael and Reanna Dunn	Robert Hebbeler	Thomas and Lisa Tingley
Louise and Eric Canter	Michael and Suzanne Bish	Robert Warnick	Thomas and Mary Lou
Lucy Lane	Michael Frabetti	Robert Zembrodt	Thomas and Kordenbrock
Lynn Stockholm	Michael Sketch	Roger and Mary Hehman	Thomas and Robin Stewart
Maggie Biederman	Michele Redden-Borowski	Roger Schwartz	Thomas and Sara Kennedy
Marcella Delong	Michelle Tibbs	Ron and Sherry Madrick	Thomas Martin
Marcia Kohorst	Michelle and Jeffrey Leder	Ronald and Emily Droege	Thomas Yocum
Margaret and Thomas Knorr	Molly Weaver	Ronald Lubbe	Tim Smith
Margaret Hampton	Ms Henrietta Goolsby	Ruby Emmelhainz	Timothy and Beverly Frommeyer
Margaret Kuhlman	Nancy Goodall	Rusty and Regina Sheehan	Timothy and Kirsten Auch
Margaret Owens	Nancy Schrand	Ruth Averdick	Tina Haunert
Margie Hardebeck	Nancy Staurovsky	Ruth Bamberger	Tom and Carol Rasp
Margo Baumgardner	Nannette Bernales and Peter Rightmire	Ruth Broomall	Tom and Vira Schmidt
Marie Schenkel	Neil and Sarah Leyshock	Ruth Miner	UKOGF Foundation
Marilyn McDermott	Nicholas and Gloriette Winnike	Saint Mary Parish	United Way of Greater Atlanta
Mark and Amanda Kolar	Nicholas and Peggy Gamble	Samantha Cetrulo	United Way of Greater Milwaukee
Mark and Catherine Guilfoyle	Norma Biery	Sandy Dalton	UWSWPA.org
Mark and Kimberly Arnett	Old Kentucky Bourbon Bar	Sandy Niemiec	Verst Group Logistics, Inc.
Mark Bukala	Pam Rose	Sarah Clapp	Vickie and David Bradhold
Mark Cocco	Pam and Steve Tucker	Schneller & Knochelmann	Vincent and Ann Stamp
Mark Speed	Pamela Sutthoff	Scott and Janet Fedders	Virginia Strunk
Marra Degraff	Pampered Chef	Shannon Carlin	Virginia Wessner
Marsha Ladenburger	Patricia Augur	Shannon Herald	Wayne and Deborah Onkst
Martin and Lynda Gerrety	Patricia Dion	Sharon Graff	Wilbert Ziegler
Martin and Melissa Mitchell	Patrick Crowley	Sharon Hilinski	William and Beverley Frederick
Mary and Bart Brown	Patrick Day	Sharon Johnson	William and Helen Hanrahan
Mary Ann Donoghue	Patrick Humphrey	Sharon McGovern	William and Mary Ruth
Mary Ann Nestheide and Darrell Archer	Patty Flinchum	Sisters of St. Joseph the Worker	Donnermeyer
Mary Beth Novogroski	Paul and Adeline Throop	St. Walburg Monastery	William Golz
Mary Bruggen	Paul and Cindy Miller	Stanley Webster	Wynita Worley
Mary Corken	Paul and Linda Davis	Starr and Deborah Comstock	Yeshi Leggesse
Mary Davidson	Paul and Rose Lankisch	Stephanie Hennessey	Zion Lutheran Church
Mary Ellen Matts	Paula Rottinghaus	Stephen and Suzan Wertz	
Mary Hudson	Paula Zalla	Stephen and Jane Lorenz	
Mary Jo Mosier	Peter Manczyk	Stephen Hoffsis	
Mary Klingenberg	Ralph and Irma Drees	Steve and Marianne Fieger	
		Steve Germain	



## IN-KIND DONORS

A.W. and Chelsea Hamilton	Dale and Amy Arlinghaus	Judy Burris	Sacksteder's Interiors
ADM (Wild Flavors Inc.)	Dave & Busters	Julie Dusing	Sarah Krumme
Alexandria Community Church	Dave and Karen Drees	Kathleen Clark	Servatii
Alyse Hoffer	David and Mary Dean	Kathleen Mahannah	Sheila Hill
Amazon Hebron	Davinci Micro Fulfillment	Katie Hehman	Silverlake
Amy Johnson	Deb Bauer	Katie Poston-Davis	Skyline Chili
Angel LaChance	Del Gardo's Cannoli	Kevin and Carol Hemmer	Southside Strength Co.
Ann Hemmer	Delta Airlines	Kings Island	St Elizabeth Medical Center
Anne Richter and Carla Manning	Delta Dental of Kentucky	KTL Therapy	St. Agnes Church
Annie Driscoll	Devou Golf & Event Center	Kurtzman Plastic Surgery	St. Agnes School
Anonymous	Divvy Up Socks	La Soupe	St. Boniface
Avon Miami Charities	Dollar General Corp	Larry's	St. Elizabeth Hospital
Baird - The Tapke Dusing Group	Doug and Nancy Armbruster	Latonia Baptist Church	St. Joe's Holy Name Society
Baker-Hunt Art Center	Doug Gallenstein	Laura Canter	St. Mary Parish
Barb Kramer	Edna Hon	Laura Kluse	St. Patrick Parish
Bard's Burgers and Chili	Elaine Davis	Learning Express	St. Pius Church
Behringer-Crawford Museum	Elden and Julie McCubbin	Lewin Properties LLC	St. Pius X Parish
Bernd Mrozek	Elea Project	Licking Valley Quilters	Stanley Webster
Bill Sharold	Elements Hair Studio	Linda Cinderella	Stephen and Jane Lorenz
Bob and Emily Berning	Ensemble Theatre	Lisa Reeves	Stephen Hoffsis
Bob and Rita Hall	Eric and Louise Canter	Little Flour Baked Goods	Stephens Golf Center
Body Alive Fitness	Fabulous Furs	Loschiavo's Produce & Deli	Sterling Cut Glass
Boone County Golf Courses	Face Forward Aesthetics	M&K Associates	Steve and Laura Izor
Boyle Jewelers	FedEx	Mama's on Main	Strategic Employee Benefit
Brad Drew	First Financial Bank	Megan Groat	Strong's Brick Oven Pizza
Brad Sturdivant	Florence Chiropractic Center	Megan Neilheisel	Summer Oldhem
Brian Redden	Frida 602	Mike's Car Wash	Susan Vaughn
Bruce Walters	Friends of Kenton County	Molly Malone's Irish Pub	Ted and Rebecca Reckers
Bunches Of Bows	Libraries	Mother of God Church	Terri Hill
Burn Boot Camp	Gail Pennington	Nancy Collins	Terry and Karen Cady
Busken International	Garzelli's Pub	Natalie Denham	Terry Foster
Cadence Academy	George and Sara Johns	Neely Stewart	The Bridge Church
Carolyn Eagen	Ginny Southgate	New Riff Distilling	The Good Crumb
Central Coast Diving	Gloria Dei Lutheran Church	Nothing Bundt Cakes	The Lash Bar
Chef Barone's Catering	Goodfellas Pizzeria	Oriental Wok	The Ritz Ballroom Dance Studio
Cheryl Borkowski	Gorilla Glue	Ortho Cincy	The Standard
Children's Home Northern	Graeter's	Otto's	The Toy Library
Kentucky	Hackman Woodworking	Pam Rose	Tim and Elizabeth LaPash
Chrissy Dutton	Halt N Salut Equestrian Center	Paolo A Modern Jeweler	Tim Hall
Christa Mueller	Herzog Jewelers	Pat Hemmer	Tim Weber
Christ's Chapel Assembly of God	Hofbrauhaus Newport	Pee Wee's Place	Tom and Elizabeth Heist
Cincinnati Art Museum	Homage	Perfetti Van Melle	Turkeyfoot Middle School
Cincinnati Women's Club	Home City Ice	Plush Beauty Bar	United Way
Cincinnati Zoo & Botanical	Hudepohl Jewelers	Putt Putt Fun Center	Victoria Brandenburg
Gardens	Hugh and Jeanne Henry	R&L Global Logistics	Vision One
Cincy Shirts	Immaculate Heart of Mary Church	Rex and Maggie Biederman	Walton Christian Church
Columbia Sussex	Jason Beasley	Rex Fultz	Walton Verona Elementary
Connie Cole	Jennifer O'Brien	Rhinegeist Brewery	Wayne Gade
Country Hills Montessori	Jeri Stull Orthodontics	Rhonda Cornwell	We Hero
Covington Cathedral	Jessy Ruthsatz	Riverbend Music Center	William and Lynn Hemmer
Crescent Springs Tobacco Shop	Jodi Firth	Robert Hyland	Wise Owl Preschool
Custom Design Benefits, Inc.	Joey & June Boutique	Ryan Gehling	Wolfer Promotions
CVG	John and Diana Lovelace	Saba Alam	Woodhouse Day Spa
Cyndi Meyer	John Klare	Saket Maheshwary	YMCA of Greater Cincinnati

# STAFF MEMBERS

## SENIOR LEADERSHIP

Danielle Amrine, CEO  
 Amanda Couch, VP of Program Operations  
 Brian Van Arsdale, COO  
 Elizabeth LaPash, VP of HR & Grant Administration  
 Kelly Rose, VP of Marketing & Development

## MANAGEMENT

Antoine Taylor, Supervisor of Homeless Solutions  
 Brandy Lovensheimer, Compliance & Training Director  
 Bridgette Smith, Supervisor of Regional Services:  
     Lake Cumberland  
 Jenna Gurren, Director of Homeless Solutions  
 Lindsay Vogel-Shockley, Supervisor of Housing  
     & Supportive Services  
 Meghan Radcliff, Supervisor of Shelter Services  
 Mikayla Roark, Director of Housing & Supportive Services  
 Robert Hill, Director of Regional Services  
 Vincent Lewis, Supervisor of Regional Services:  
     Buffalo Trace & Gateway  
 Wynita Worley, Accounting and Payroll Director

## ADMINISTRATION

Andrew Spurlock, Compliance & Training Specialist  
 Brandon Brown, Policy & Procedure Specialist  
 Jasmine Murdoch, Accounting Specialist: Team Lead  
 Marlena Auch, Accounting Specialist  
 Natalie Endres, Development & Marketing Coordinator  
 Paul Klein, IT Specialist  
 Richard Rompies, Maintenance Reserve

## HOMELESS SOLUTIONS – SERVICE COORDINATION

Amanda Booker, Street Outreach Service Coordinator  
 Beverly Merrill, Mental Health Service Coordinator  
 Christi Rees, Social Security Outreach Service Coordinator  
 David Franken, Street Outreach Service Coordinator  
 Frank Hadden, Street Outreach SC Team Lead  
 Jodi Glass, Service Coordinator  
 Julia Hampton, Receptionist  
 Katazia Grant, Service Coordinator: Team Lead  
 Katie Thornberry, Service Coordinator  
 Merci' Cannon, Street Outreach Service Coordinator  
 Tiffany Erskins, Street Outreach Nurse  
 Troy Harper, Street Outreach Service Coordinator

\* represents Welcome House employees as of December 31, 2023

## HOMELESS SOLUTIONS – SHELTER SERVICES

April Williams, Service Coordinator w/Shelter  
 Carrie Wynn, Shelter Advocate  
 Emily Freeman, Shelter Advocate  
 Heidi Hater, Medical Respite Program Coordinator  
 Jessica Godby, VA Program Coordinator  
 JoAnn Shockney, Shelter Program Coordinator  
 Kimberle Monk, Shelter Service Coordinator  
 Kristina Vickers, Shelter Advocate  
 Meghan Radcliff, Family Promise Program Coordinator  
 Misy Lester, Shelter Advocate  
 Natalie Griffin, Shelter Advocate: Food Services  
 Tammy Hammons, Shelter Advocate  
 TJ Jansen, VA Shelter Advocate

## HOMELESS SOLUTIONS – REGIONAL SERVICES

Adam Morrow, Rapid Rehousing Service Coordinator  
 Candace Wenger, Street Outreach Service Coordinator  
 Cynthia Watson, Street Outreach Service Coordinator  
 Haley Metcalf, Rapid Rehousing Service Coordinator  
 Hannah Applegate, Street Outreach Service Coordinator  
 Jeff Earlywine, Permanent Supportive Housing  
     Service Coordinator  
 Leah Clark, Prevention Service Coordinator  
 Niccole Harris, Street Outreach Service Coordinator  
 Sherry Anderson, Permanent Supportive Housing  
     Service Coordinator

## HOUSING & SUPPORTIVE SERVICES

Alyson Hubbard, Housing Navigator w/TBRA SC  
 Andrea Price, Payee Account Manager-Team Lead  
 Angelys Davies, Payee Service Coordinator - Lexington  
 Jaclyn Knight, Rapid Re-Housing Service Coordinator  
 Kassie Fleckinger, Payee Service Coordinator  
 Michelle Heckendorn, Payee Service Coordinator  
 Monica Smith, Rapid Re-Housing Service Coordinator  
 Rebecca Sherry, Housing Service Coordinator  
 Sarah Bryant, Rapid Re-Housing Service Coordinator  
 Tawny Cotto, Payee Service Coordinator

*A special thank you to our staff who work tirelessly to make our mission of ending homelessness possible. It is truly because of you that we are able to take those we serve from housing uncertainty to housing stability. You are appreciated more than you will ever know.*





Ways to get involved:

*volunteer*  
**donate**  
ADVOCATE



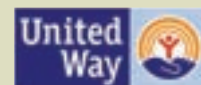
*Ending  
Homelessness*

P: 859.431.8717 F: 859.431.6297  
1132 Greenup St. | Covington, Ky 41011



Like or follow us for more  
information and to stay  
up to date on everything  
Welcome House

*WelcomeHouseKy.org*



*Agency Partner*

