



*Ending
Homelessness*

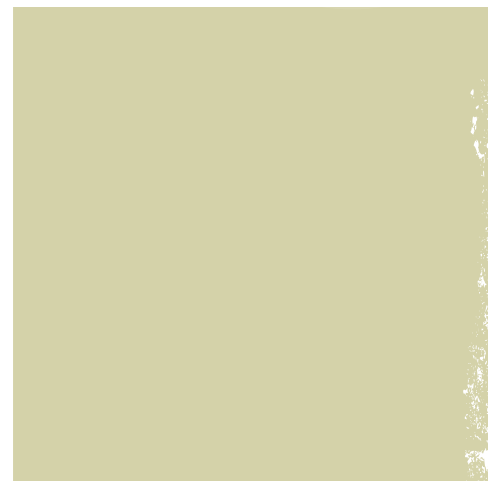
*Our mission
is to provide
a continuum*

ANNUAL REPORT

2018



*each person
we serve*



Working to **end**
HOMELESSNESS
in **NORTHERN
KENTUCKY**
by guiding our clients
FROM *housing*
uncertainty
**TO HOUSING
STABILITY**

Letter from Danielle Amrine, CEO



"Darkness cannot drive out darkness; only light can do that.

Hate cannot drive out hate; only love can do that."

-Martin Luther King, Jr.

This quote resonates so much with me now more than ever. It seems everywhere we look, people are divided; politically, religiously, spiritually. We've experienced such horrible atrocities this year in Parkland, Orlando, and several others. In 2018, the United States averaged at least one deadly mass shooting a month. As a nation, as a society, how do we overcome such a bleak state of affairs? Some choose anger and blame. Some blame the culture, the weapons, the political affiliation, the gender. I see people who were once friends speaking to each other so harshly. This makes me think of my actions and whether I am contributing to the problem or the solution. This brings me back to this quote. Should we be angry about what's happening in our world today? Absolutely, but hate will never drive out hate. Darkness will never drive out darkness. Only love can do that. Only light can do that. When thinking about the person I want to be, and the services Welcome House should provide, I think we should be the providers of light and love. We have the wonderful opportunity to drive out the darkness and hate in our community, and we take that responsibility very seriously.

It has been quite the year of learning and growth for Welcome House. We've had the opportunity to take on new challenges and grow new programs, which is always exciting for a nonprofit. Our transitional age youth project, Opportunity Youth Housing Initiative, took flight this year. Through this program we have been able to house over fourteen at-risk or homeless youth between ages 18-24. We've been gifted the opportunity to engage with these youth and change the trajectory of their young lives. Having been a homeless transitional age youth myself, I know how beneficial the interventions at this age truly are. Last year we saw an increase in the number of people served, just over 1,600 individuals. The services we provide are more critical than ever.

We are looking forward to this new year. We are looking to expand services, to look at target populations, and to continue to bring light and love into our community and the lives of our clients here at Welcome House.

Danielle Amrine
CEO

Overall Agency:

- Last year Welcome House served 1,676 individuals; 25% were children.
- 100% of our clients were homeless and living in poverty; 97% had an annual income of \$10,000 or less

support

CHALLENGES

SERVICE COORDINATION

The Service Coordination area provides assessment, outreach, case planning, financial education/budgeting, housing counseling, employment support, and community referrals services. Service Coordinators work directly with residents staying at the Welcome House shelter and other local shelters, as well as individuals and families who are homeless or at-risk of becoming homeless.

Staff members work with individuals and families to obtain employment and/or benefits; locate affordable child care options; foster self-determination and stability; and assist in obtaining and maintaining permanent housing. Service Coordinators establish relationships with local subsidized housing facilities, landlords, and employers. In addition, Service Coordinators also assist clients in searching for housing, filling out applications, and providing transportation.

While clients are experiencing homelessness, Service Coordinators meet with clients weekly (sometimes daily), to provide support and direction. After clients obtain stable and affordable housing, they are offered additional in-home visits to help keep them on their targeted plan of self-sufficiency and to provide additional support for up to six months. The Service Coordination area works toward the Welcome House mission by meeting clients where they are in their journey of homelessness and offering a continuum of services to transition them from insecure housing into stable housing.

Client Story

Omer became homeless when his wife, who had been his caretaker, passed away. He spent three years on the streets, spending his nights in whatever shelter he could get into, or on friends couches here and there. He had an income and a representative payee, and he had been applying for permanent supporting housing over the years only to be denied time and time again with no explanation.

When Omer came to Welcome House, we knew we had to get to the bottom of the housing denials before we could make any progress. It turned out that he had been denied for years because of a past due utility from four years prior. Omer's church graciously offered to pay the past-due bill, and once that was taken care of we were able to get him into permanent supportive housing, and off the streets for the first time in three years.

In 2018...

- Service Coordination worked with 466 individuals; 342 adults and 124 children
- 70% of households exited into permanent housing
- 42% increased their total income
- 90% of adults accessed public benefits including healthcare



programs & services

INCOME & BENEFITS

Representative Payee Program

This program assists persons with mental and/or physical disabilities by direct management of their disability income because they do not have the capacity to manage their monthly bills. Welcome House acts as a financial agent (called a Payee) for clients without an appropriate adult in their life to fulfill this role. Payees pay rent, utilities, and other monthly bills on the clients' behalf. The Social Security Administration and the Veterans Administration both require that some persons receiving disability payments have a Payee to represent them. Without a Payee, the client cannot receive disability income or medical coverage. The overall results of the program focus on improved quality of life and stabilization of a vulnerable population. Clients often transition from living on the streets with debilitating illnesses to having an income, housing, medical coverage, and the support necessary to lead a more independent life.

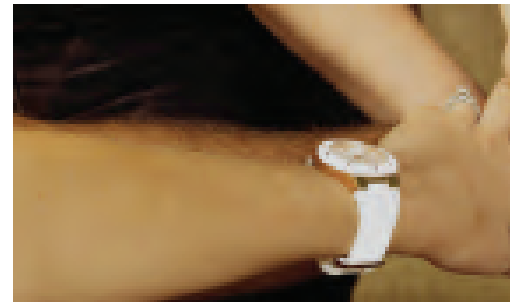
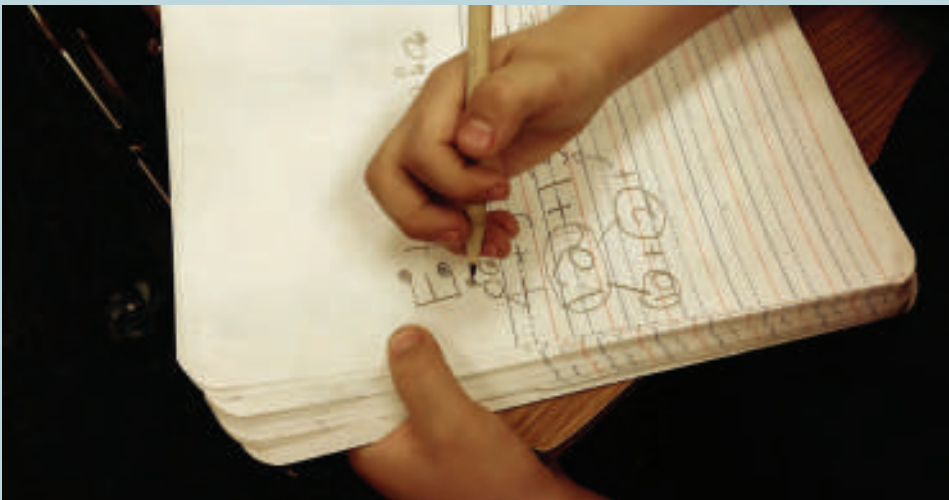
In 2018...

- *The Payee Program assisted 119 people with physical and/or mental disabilities by direct management of their disability income.*
- *100% of payees maintained housing and developed a budget and savings plan*
- *87% of Payee Clients were in affordable housing; defined as paying less than 30% of their income on rent*

Client Story

Kevin, 40, grew up with several developmental disabilities, including PTSD and depression. Throughout his life, he bounced from home to home, never really having the support network that would help him navigate some of the instabilities that were happening in his life. In his adult life, Kevin found himself alone and living on the streets. Navigating his untreated disabilities, along with being street homeless proved to be too much for Kevin.

When he came to the Welcome House Payee program, Kevin felt he was at the end of his rope and on the brink of giving up. With the help of his Payee Service Coordinator, we were able to get Kevin on SSDI, help him with his finances, and house him at our King's Crossing location. Everyday Kevin helps Welcome House staff with little tasks or chores around the building to show his gratitude for his home and for the support he has found within our walls.



programs & services

Outreach Program

The Outreach Program, called Open Door, has been active since July 11, 2017. It is an interdisciplinary team composed of 3 members – a Kenton County/Campbell County outreach worker, a Boone County outreach worker and a Nurse Practitioner. Holistic street-based outreach has been a long standing gap that was lacking in previous iterations of outreach teams in the past. Having this understanding allows us to address not only housing, but also physical and emotional needs. Our goal is to bring emergency stabilization services to the aforementioned counties, and also plan to expand to the rural counties. The outreach team's priority is to spend time searching for those experiencing homeless as well as to build relationships with them as we address physical and emotional needs. Another priority where the team shines is our goal of educating and connecting community resources together. The team continues to knock down transportation barriers by meeting the clients where they are in the community.

In 2018...

- 384 individuals were served through the Outreach Program
- 67% of those served were men
- 33% of those served were women

The Social Security Outreach Program (SSO) uses the S.O.A.R. (Social Security Outreach, Access & Recovery) method to complete Supplemental Security Income (SSI) and Social Security Disability Insurance (SSDI) applications for individuals who have mental and/or physical disabilities and who are homeless or at-risk of becoming homeless. Partnering with the Social Security Administration and Disability Determination Services, the program seeks to identify, support, and alleviate individuals from poverty and homelessness by helping to provide stable, permanent income, access to medical insurance programs such as Medicaid and Medicare, and social services coordination.

In 2018...

- 111 applicants were assisted in applying for social security benefits last year.

Client Story

Steven, 65 and street homeless, had hit a wall when it came to obtaining social security (SSI). The bureaucracy surrounding him receiving benefits was becoming too much for Steven and he was close to resigning himself to spending the rest of his life on the streets. Wanting to give his application one last try, Steven was referred to our Social Security Outreach Program (S.O.A.R., Social Security Outreach, Access & Recovery).

After two weeks of working with his coordinator, Steven's claim was filed and three weeks after that he was approved for SSI benefits. While waiting for his benefits to start, Welcome House was able to supplement Steven with new clothing, food, and hygiene items while he stayed at the local Emergency Shelter. Once funds started to arrive, Welcome House was able to find him stable housing. After many years on the street, Steven now has a roof over his head and a place to call home.



generosity

programs & services

HOUSING

Temporary Housing

Shelter

The Welcome House Shelter for Homeless Women and Children provides a safe place to stay for approximately 35 homeless women and children each night. Residents of the Shelter work with Service Coordinators and other Welcome House staff to increase income and access affordable housing, while removing any challenges or barriers to success.

While working toward greater stability, clients are offered a safe place to live, nutritious meals, hygiene supplies, and extra assistance (such as help with transportation and referrals to area resources). Shelter residents benefit from the caring support of a 24-hour staff, volunteers, and donors who help meet their needs.

Of the 248 individuals served in 2018, 36% were under the age of 17. Children who stay in the Shelter (as well as those of other families served by the other Welcome House services) have the support of a staff member dedicated to meeting the needs and protecting the rights of homeless children and youth. Mothers are offered assistance in enrolling children into school and daycare, and in meeting the material needs of their children.

During their stay at the Shelter in 2018...

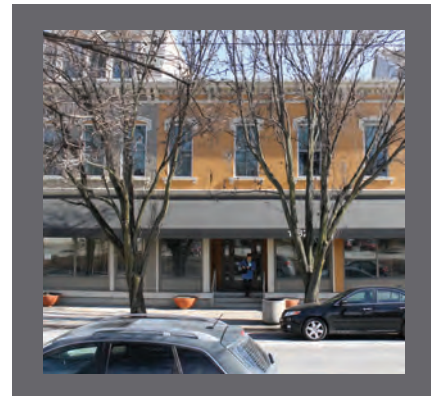
- 248 individuals stayed at our Shelter (177 adults and 71 children)
- The average length of stay at the Shelter was 44 days
- 99% of the households met and worked with a Service Coordinator to establish goals pertaining to income and housing
- 76% exited shelter into positive housing outcomes



Client Story

All Nicole, 33, wanted to do was love and take care of her six year old daughter, Maddie. But being a single mom, lodging in a chaotic household with multiple family members, and living pay check to pay check kept Nicole from focusing her attention on the only person that mattered in her life.

When Nicole and Maddie came to the Welcome House Shelter for Homeless Women and Children, Nicole was able to receive the support needed to find her own housing, childcare, and even secure her own transportation to work. In the thirty days that they were here, Maddie and Nicole were able to live in a stable, caring environment where their needs were met and they never had to worry about where their next meal would come from. Today, Maddie and Nicole live in their own apartment, where Maddie has her own bed and, most important, a place to call home.



Affordable Permanent Housing

King's Crossing Apartments

Eight subsidized apartments (efficiency, 1, and 2 bedrooms) are located in the Eastside neighborhood of Covington. Tenants must be homeless at the time of application and a member of the household must have a disability.

Scattered Site Affordable Housing

Twenty-three apartments (efficiency, 1, 2, 3, and 4 bedrooms) with subsidies are located in the Mainstrasse neighborhood of Covington, and 19 efficiency apartments are located in the Eastside neighborhood of Covington. Welcome House completely renovated these units to create a modern and updated living space.



In 2018...

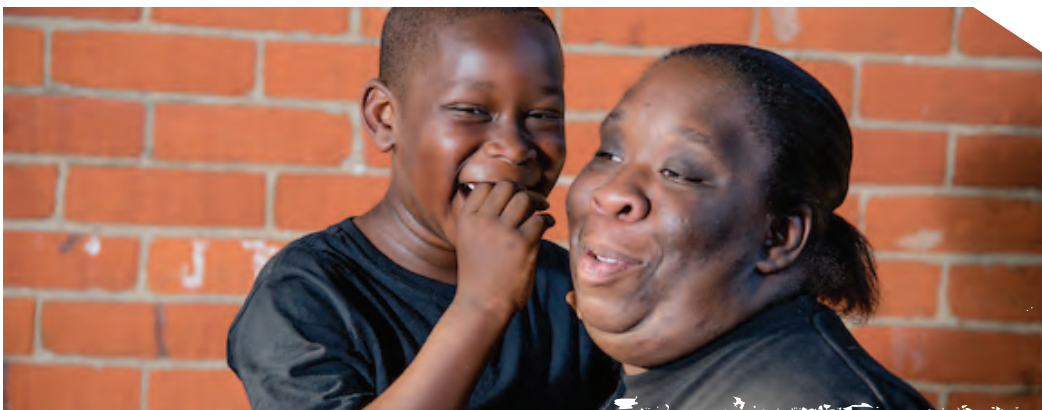
- 73 Individuals were served with Rapid Re-Housing Assistance and 95% obtained stable housing
- 16 individuals (9 households) were served at King's Crossing

Rapid Re-Housing

This program provides rental assistance so that individuals and families can move quickly from a shelter or living on the streets into an apartment of their own. The assistance provided is customized to match the individual needs of each household; some households receive one-time assistance while others may receive assistance over several months until they are stable.

Client Story

Patty, 55, was living on the streets for over 10 years with a mental illness. With the help from community members trying to find her housing, Patty ended up in our Shelter for Homeless Women and Children for three months while her service coordinator helped her apply for social security benefits. In the interim, we worked with Patty to find permanent supportive housing in one of our 23 Mainstrasse housing units. When the funding came through for Patty, she was immediately housed in one of our rehabbed apartments in Mainstrasse—which meant that Patty was able to stay in her community that rallied so hard around her. Patty now has a roof over her head and she is able to see her friends that she has met over the years, but return home to a safe and happy space.



hope

programs & services

Gardens at Greenup Apartments

Opened in 1996, the Gardens at Greenup is a supportive housing program for adults pursuing their post-secondary education and their children. It is designed to strengthen families by providing affordable, subsidized housing with on-site support services, including case management, education planning and support, career planning, financial literacy, life skills training, and childcare. The program is unique in setting a holistic standard for self-sufficiency, including personal growth development, family activities, and building a community of support. Clients work on goals in the following areas: education, income, family support, self-sufficiency, and budgeting. In addition, residents are supported through the Women's Leadership Council of Greater Cincinnati with monthly events and mentoring opportunities. A resident may stay as long as they are fulfilling their education goals, though the average stay is between 2-3 years. The length of stay is determined by the resident's progress toward goals and compliance with the program requirements.

In 2018...

- *Gardens at Greenup served 28 households*
- *100% of residents increased access to eligible benefits*
- *86% of the children demonstrated progress in cognitive and language skills*
- *100% of the children enrolled in quality early learning programs enter kindergarten "Ready" as measured by state readiness tool*

Client Story

Molly, 18, and Hailey, 2, found themselves jumping from couch to couch while Molly was trying to finish her high school degree. When Molly came to Welcome House in an effort to find housing, we were able to get her into our Garden's at Greenup program and provide her with permanent supportive housing in one of our 20 units located on Greenup Street in Covington. A year later, Molly is now attending a local college for her nursing degree and Hailey is enrolled in one of our pre-school childcare centers located right across the street from their apartment. Molly and Hailey now have the support to overcome any barriers that might arise and Molly hopes for a brighter future where she can provide the best life to Hailey.



SUPPORT

HOUSING

Opportunity Youth Housing Initiative (OYHI)

In October of 2018 Welcome House launched Opportunity Youth Housing Initiative for youth ages 18-24. This is the only program in Northern Kentucky where homeless youth receive support with income, housing, health, and education. Since the program began, nine youth went from homeless to housed. While our clients are in transitional housing we work with them on four main areas: income, permanent housing, health, and education. Every client is unique and we create a case plan that works to meet the specific goals and needs of each individual. The OYHI Service Coordinator works with youth to obtain or maintain employment and/or benefits, locate child care options (if necessary), ensure they have access to health care, assist in obtaining/maintaining permanent housing, and develop educational plans (obtaining a GED, plans to finish high school, enrolling in post-secondary education, etc.). The Service Coordinator also works with local schools to help youth stay enrolled in school and work through any barriers.

In Northern Kentucky, the Opportunity Youth Housing Initiative is the only program to support the 18-24 youth homeless population. During the 2016-2017 school year, the Kentucky Department of Education reported 139 12th graders in Kenton, Boone, and Campbell Counties who were homeless. In 2018, Welcome House served 54 clients ages 18-24 throughout all of our programs.

In 2018...

- 9 transitional-aged youth were served through the new housing initiative
- 2 of those served were under age 18
- 56% of those served were male
- 44% of those served were female

Client Story

Marcus, 19, came to Welcome House in March of 2018. Months prior to coming to us, Marcus had been displaced from his family home because his parents could no longer afford to have him under their roof. He was bouncing from home to home of friends and relatives, while maintaining employment at a local fast food restaurant where he would ride over 10 miles a day on his bike to get to.

One day a service coordinator at our King's Crossing location found Marcus sleeping in our lobby. We got to know Marcus and learn his background and story, while trying to help him as best we could until we could find him stable housing. After a couple weeks, we were able to place Marcus in a house we purchased in Covington, where he was able to continue working with his service coordinator to gain access to benefits and housing. Today, Marcus is still living in the home we own with three other young men who were experiencing homelessness, he has been connected with benefits, and has maintained a steady job for the past six months.



photos



Top left: Wanda, client, holding the keys to her new home.

Top right: FedEx employees collected backpacks full of school supplies for the children in our services.



Bottom left: Omer, client, happy to be back on track.

Bottom right: Welcome House's largest food donation of the year from the Apartment Association of Cincinnati.





Top left: Madelyn, volunteer, collected food for our Shelter.



Top right: Charles, client, happy to have a place to call home.

Bottom left: Food donation from the Feds Feed Families campaign.

Bottom right: Brittaney, client, holding her new keys.



volunteers



Volunteers are essential to the success of Welcome House. Without the support and help from numerous individuals and groups, we would not be able to achieve all that we do.

Throughout 2018 Welcome House was host to many volunteer groups who helped spruce up our properties.

Local artist Greg D'Amico created a mural at the front desk of our King's Crossing location to help brighten up the lobby. A&A Lawncare donated new mulch and shrubs for the playground at our Gardens at Greenup Apartments, in addition to building a new courtyard outside the King's Crossing office. Volunteers from L'Oreal restained old fencing, fixed a broken shed, and more. A group from University of Cincinnati spent UC's Day of Service painting the entryway to one of our buildings as well as our conference room. We are grateful for all of our volunteers for helping us keep our spaces beautiful and inviting for those we serve!

In 2018, Welcome House had 1,928 total volunteers. Out of these 1,928 individuals, 944 volunteered in direct services and 984 in indirect services. These individuals contributed a total of 7,861 hours of volunteer work to Welcome House which is the equivalent of \$181,353 in cost-free assistance.



Volunteer Spotlight

For over 20 years the same group of family and friends have been hosting a Thanksgiving Day meal for clients of Welcome House who may not have anywhere else to celebrate the holiday or find a meal this delicious! The group comes in with all of the turkey, mashed potatoes, cranberry sauce, and other sides that make for a hearty holiday meal, they set up a dining room with festive tablecloths and napkins, they serve drinks and fetch refills, and spend hours of time out of their own holiday to make sure those in need have a great Thanksgiving day, complete with carry-out containers for seconds to-go!

We have many ways you can get involved with Welcome House. Whether you are an individual, a family or group of friends, or a corporate group, we have the volunteer opportunity for you! To learn more about these opportunities, please visit our website at www.welcomehouseky.org.



CHANGING LIVES

IN-KIND DONATIONS

In 2018 Welcome House received \$94,176 in food and non-food donations. Because of our generous donors, toys were available for our children in Shelter for their birthdays, hats and scarves were provided during the winter months, and every client was able to receive hygiene items when needed. This year's donations helped provide the basic necessities to our clients so that they could focus on housing for them and their family.

Holiday Giving Trees continued to make an impact in 2018. Giving Tree hosts hang tags on holiday trees in central locations, such as an office lobby, each with a donation need listed. Guests take a tag and return to place the gift under the tree. Giving Tree donations are often household items which help the families we serve as they transition from homeless to home. Last year, Welcome House was honored to receive gifts from 25 Giving Trees!

Our donation wish lists can be found at welcomehouseky.org/get-involved/wish-list-items.



WELCOME HOUSE OUTREACH

Welcome House Outreach, also referred to as the WHO, has been an auxiliary fundraising group for Welcome House since 1990. The WHO organizes and hosts the annual Summer Sunday event held the first Sunday in August and the WHO Shower held in April. The group is comprised of approximately thirty women who donate their time and energy toward making these events and their volunteer work successful. In 2018, the WHO raised over \$45,000 for Welcome House! In addition to their event support, the WHO members also volunteer monthly by making a meal for the women and children in our shelter and contribute frequently to our in-kind donation efforts.



They have been a strong source of support over the years and we are extremely thankful for their consistent support.

Shawn Baker
Karen Cady
Laura Canter
Louise Canter
Cindy Carl

Karen Daugherty
Dana Griffin
Juanita Griffin
Elizabeth Heist
Ann Hemmer

Pat Hemmer
Kristen Inman
Terri Jameson
Brittaney King
Marie Piccola

Rebecca Reckers
Karen Smith
Gabrielle Summe
Jean Zeck

Impact 100



Welcome House was awarded a grant in the amount of \$104,000 as a 2018 Impact 100 Grant Recipient. The highly coveted award allows us to serve homeless individuals in all Northern Kentucky counties with primary care, respite care, or minor urgent care services via a medically equipped outreach van.

The \$104,000 grant from Impact 100 enabled us to purchase a mobile outreach vehicle, medical equipment, and various food and hygiene supplies. Currently, a majority of medical and service coordination services are being provided at shelters, street corners, parks, and encampments. Until Open Door, our street outreach program, launched, there were no mobile clinics in the Greater Cincinnati Region that offered both service coordination and healthcare services.

Thank you to Impact 100 and congratulations to the other 2018 recipients!



Welcome House was a grant recipient along with five other outstanding nonprofit organizations including: Wave Pool, Outdoor Adventure Clubs of Greater Cincinnati, LaSoupe Cincinnati, Venice on Vine, and City Gospel Mission.



LETTER FROM OUR BOARD CHAIR



Dear Partners,

This was my first year of serving as the Board Chair for Welcome House and 2018 was a whirlwind of activity. I am so proud of the accomplishments this year and want to say that our team is amazing. With every opportunity that was presented, the staff and leadership jumped into action. I have never seen such a great, cohesive group of individuals with the ability to work together so well. I think the secret to success is continuous focus on the mission and a lot of hard work!

Many new challenges were also presented this year but the Welcome House has overcome them by creating new processes, gaining new community supporters, and building new service lines. Our leadership has streamlined many processes with the focus on getting our clients quicker entry with as few barriers as possible. This resulted in the agency increasing the total number of individuals served in all demographics.

We began our Transitional Age Youth program at the request of our local school systems. It started with one simple but complicated call asking, "Can you help?" The answer was, "Yes."

Even with this wonderful year and all that we have achieved, there is so much still left to do. We will continue to focus on serving the most vulnerable populations and if anyone can change the world, it will be this team. I look forward to the wonderful things that will be tackled in 2019.

Deepest Regards,

Shauna Dynes,
Board Chair

2018 Board Members

Madeline Blincoe	Tom Hausterman	Neil Leyshock, Vice Chair	Jason Spaulding
Neil Blunt	Alyse Hoffer	Chris Markus	Cara Stewart
Laura Canter	Kristin Horine	Selena Murdoch	Elizabeth Stewart-Pirone
Katie Davidson, Secretary	Stephanie Huhn, Treasurer	Wayne Onkst	Ginny Tallent
Shauna Dynes, Chair	Susan Jackson	Marie Schenkel	Shelley Werner

Events



MARDI GRAS

Mercedes Benz of Fort Mitchell in partnership with the Northern Kentucky Restaurant Association (NKRA) presented the 28th Annual Mardi Gras for Homeless Children on Tuesday, February 13, 2018 at the Northern Kentucky Convention Center. The spectacular event hosted by the NKRA featured food and drink vendors and was a very memorable evening that generated revenue for Welcome House and two other nonprofits. The money raised from the event paid for meals for the children in our shelter. Aside from food and drink booths, there were amazing Mardi Gras beads and live and silent auction items available. In 2018, Welcome House raised \$44,386 to help meet the needs of children staying at the Welcome House Emergency Shelter.

Queen Sponsor

Welcome House Board of Directors

Jester Sponsors

Aetna Better Health of Kentucky
The Merrill & Kistner Families
EGC Construction
Fidant Wealth Partners
Greenhouse Renovation Services, Inc.
Model Group
Wendy's

Platinum Sponsors

Access Audio & Video, Inc.
Steve Meyer and Friends

ANNUAL SHOWER

Playing off the idea of a traditional bridal or baby shower, this event is hosted by the WHO (Welcome House Outreach) with the purpose of bringing in-kind donations to Welcome House for families transitioning from homeless to home. In 2018, the Shower speaker was Michelle Krumpelman. As a Biltmore Estate Winery Ambassador, Michelle shared her journey from her home in Fort Mitchell to the Biltmore Estate, and how her passion for local non-profit work has blossomed over the years. Attendees brought a new item from the invite wish list – such as comforter sets, bath towels, pack and plays, and much more. These items are extremely important as our clients move into stable housing. Instead of spending their limited funds on basic household necessities, they are able to save this money for their down payment, furniture, or any number of other moving and living expenses.



SUMMER SUNDAY

Summer Sunday is a fundraising event hosted by the WHO and held at Grandview Tavern. The seventh annual Summer Sunday event was held on Sunday, August 5th, 2018. The event was a great way for friends and family to gather and enjoy live music by Nick Waters, cocktails, heavy hors d'oeuvres, silent auction, and a grand raffle. Summer Sunday is our biggest and highest revenue generating event of the year. Money raised by the event allows Welcome House to continue operating the Emergency Shelter and provide the continuum of services to meet clients where they are in their journey of homelessness. This is the only fundraising event where ALL revenue goes directly back to Welcome House and the clients we serve. In 2018, the event raised \$47,000 which helped provide over 1,300 nights in our Shelter for Homeless Women and Children.



Those who contributed in support of Welcome House and Summer Sunday in 2018 include:

Platinum Sponsor

Direct Express

Gold Sponsors

Anthem Medicaid
Baird - Tapke Dusing Group
Fidant Wealth Partners
Griffin Elite
St. Elizabeth Healthcare

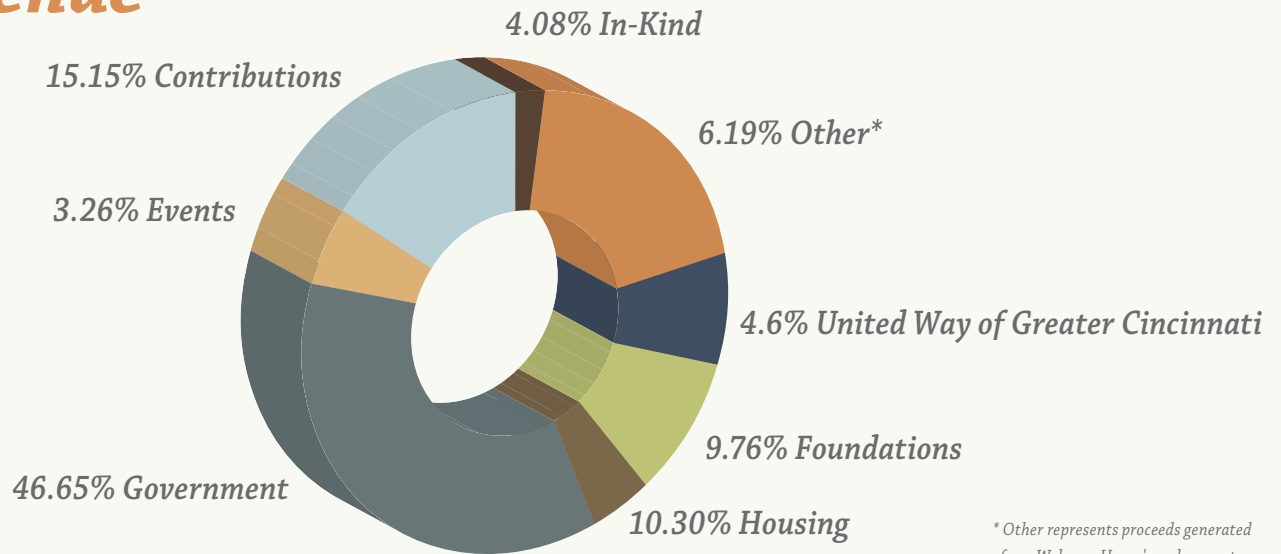
Silver Sponsors

Bill & Jean Zeck
Bilz Insurance
Blue Sky Massage
David J. Joseph Company
DBL Law

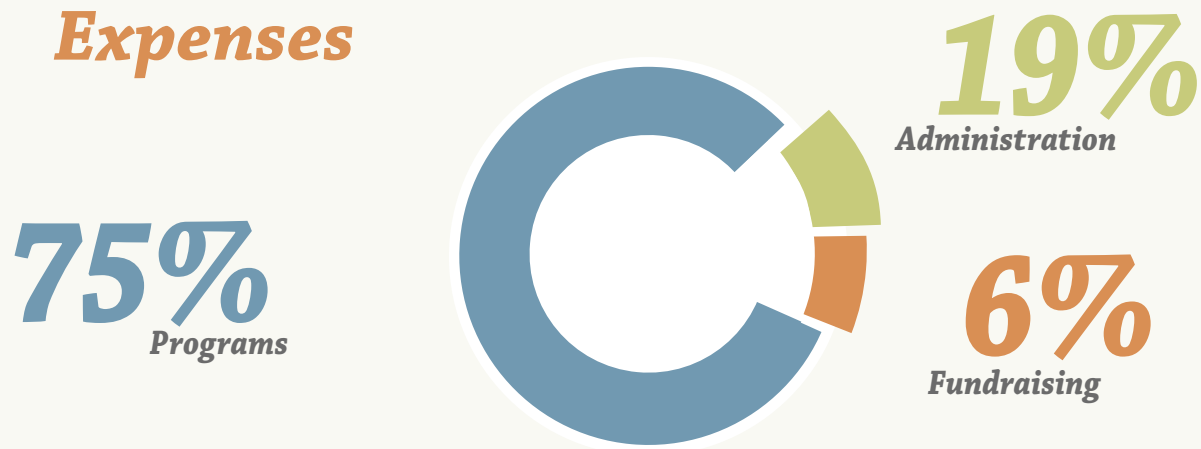
John & Juanita Griffin
Patricia Hemmer
Toebben Companies
Turner Construction

In 2018, Welcome House had net assets of \$5,993,004, revenue of \$3,365,559, and expenses of \$2,975,537.

Revenue



Expenses



donations

All those who contributed to Welcome House in 2018 are recognized on the following pages. These contributions make it possible for us to continue to work toward our mission of ending homelessness and helping those who are the most vulnerable in our community move from housing uncertainty to housing stability. Thank you for your consistent and ongoing support.

The contributions listed below are funds received above and beyond funds given through government agencies and pass-through dollars. Every attempt was made to include all individuals/groups who made a contribution to Welcome House in 2018. Please forgive any inadvertent misspellings or omissions.

WE APPRECIATE YOU



HERITAGE (Gifts above \$25,001)

Anonymous
Amerigroup Corporation/Anthem Anthem
Boone County Fiscal Court
Fifth Third Bank
Greater Cincinnati Foundation
Impact 100, Inc.
Kenton County Fiscal Court
Henry and Elaine Fischer
St. Elizabeth Hospital

LIFE (Gifts of \$10,001 – \$25,000)

Anonymous
The Butler Foundation
Campbell County Fiscal Court
The R. C. Durr Foundation, Inc.
Elsa M. Heisel Sule Charitable Trust
PNC Foundation
Scripps Howard Foundation
U.S. Bank Foundation

HOPE (Gifts of \$5,001 – \$10,000)

The Andrew Jergens Foundation
Anthem, Inc.
Apartment Association Outreach, Inc.
Jill Aylor
John and Sandy Kenkel
WellCare Health Plans
Greg Worley

SPIRIT (Gifts of \$1,001 – \$5,000)

ADM (Wild Flavors Inc.)
Baird - The Tapke Dusing Group
Barbara and Joseph Haas
Brian and Jana Cox
Brian Dickman
Bruce Walters
CareSource
Carina Sullivan
Charles and Diane Hammond
Chas H Bilz Insurance Agency, Inc.
Cheryl Johnson and Jerry Rapien
Church of the Blessed Sacrament
Custom Design Benefits, Inc.
David and Patricia Quast
Debbie Schroeder
Direct Express Delivery
Disc 'N Dat
Donald and Sue Corken
Dressman Benzinger & LaVelle PSC
Edward and Mary Lou Vogel
Elizabeth Stewart-Pirone and Joe Pirone
Fidant Wealth Partners
Frank Burns
Gary and Kary Myers
Gloria Dei Lutheran Church
Griffin Elite
Jerome Kistner
Joe and Ginnie Schmidt
John and Juanita Griffin
John Sinkula
Kathy Symons
Kenneth and Cecilia Dorger
KLH Engineers
Mark and Elizabeth Anderson
Matt Elberfeld
Melissa Wiegand
Michael and Rebecca Turney
Michael and Teresa Brennan
Michele Shaw
Michelle and Dave Kolb

Papa John's Pizza
Pat and Bill Hemmer
Patrick Crilley
PNC Institutional Asset Management
River Hills Consulting Services, LLC
Robert Maly
Serenity Funeral Care
Shad Sletto
Stephanie Huhn
Stephen and Jennifer Bailey
Steve Meyer
The Columbus Foundation
The David J. Joseph Co.
The Deaconess Associations Inc.
The Marge & Charles Schott Foundation
The Yearlings, Inc.
Toebben Company
Tom and Brenda Hausterman
Trinity Episcopal Church
Turner Construction Co.
Wayne and Deborah Onkst
William and Beverley Frederick
William and Lynn Hemmer
Zillow Group

ESTEEM (Gifts of \$501 – \$1,000)

Donald and Mary Able
Jeff and Becky Acuff
Christopher and Debra Barnhart
Deborah Borchers
Terry and Cindy Carl
Wayne F. Dickens
Thomas Dinkel
John Eldridge and Ann Ruttle
Kevin Ellis
Thomas and Marilyn Feldman
Mary Gray
Richard and Deborah Grover
James Harris
Anthony Knies
Barbara Leonard
John and Diana Lovelace
Doug Martin
Tim Mauntel
Richard and Mary Ann Menke
Audrey and Bob Merrill
Julie Mueller
Jeff and Julia Muntel
Claire Parsons
Jeff and Jami Pelini
Amy Quinn
Jane Roush
Marie Schenkel
Charles and Pamela Schneider
Karen and Gary Smith
Julie Spanyer
Karen Stephens
Julie Tapke Dusing
Earl F. and Mary B. Wittrock
Bill and Jean Zeck
Abco Oil Company
Access Audio & Video, INC.
Central Indiana Community Foundation
Conner Middle School
Heritage Bank
Macy's / Bloomingdale's
New Beginning Community Church
RCO Limited-Raising Cane's
RSVP Homecare
St. Walburg Monastery
Thomas More University
Trutschel Plastering, Inc.

Welcome House Outreach Committee

STABILITY (Gifts up to \$500)

Patricia Abello M.D.
Mary Accorinti
Gordon and Dorothy Air
Danielle Amrine
Donna Anderson
Karen Anderson
Mary Appel
Maria C. Arand
Eugene and Rosanna Ardine
Dale and Amy Arlinghaus
Nancy Armbruster
William Armstrong
Mary Atkins
Timothy and Kirsten Auch
Candace Aulick
Ruth Averdick
Davod Bagbu
Ellen Baker
Helen M. Baker
Nancy Baker
Shawn Baker
Tom Prewitt and Jamie Baker-Prewitt
Ruth Bamberger
Charlene Bankemper
Rebecca Barattieri and Brian Gebala
Nancy Barczak
Donna Barger
Kelly Barton
Joanne Basse
Norbert and Pauline Baumann
Amy Bayless
Jim and Lisa Bayne
Douglas Bean
J. Victor and Kathleen Bean
Bernie and Ann Beck
David and Nancy Bender
Kimberly Bennie
Daniel Berger
Sarah Berger
Victoria Berling
David and Karen Bertke
Tony and Diane Bertke
Tiffany Bessey
J.E. and Ruth Bessler
Todd Bezold
Trudy Bieger
Norma Biery
Jai Bikhchandani
James and Rebecca Bilbo
Richard and Barbara Blank
C. William and Mary Blewett
Jennifer Blincoe
Kathleen Board
Ginny Bolte
Cole D. and Kasey Bond
Kevin and Michelle Borowski
Thomas Bowers
Terry Bowlds
Charlene Bowling
David and Valerie Bowman
Jessica Bradbury
Joann Bradford
Karen Brandstetter
Charles and Joan Breetz
Judith Brennan
Meredith D. Brennan
Brett Bresser
Roxanne Brett
Paula Brickler
Richard and Mary Broeg
Micah Brondhaver
Aaron and Jodianne Broomall
Ruth Broomall
Jill Brown
Robert and Rebecca Brown
Paul and Sue Bruggen
Rob Brungs
George Budig
Kelly Buetsche
Ann Bullock
Nancy and Thomas Bunnell
Mike Burkhart
Daniel Burr
Edwin V. Burtness
James and Barbara Bushman
Karen and Terry Cady
Virginia Cahill
Carole Cameron
Nick Camilleri
Laura Canter
Louise and Eric Canter
Chris Carey
Elizabeth Carleton-Scheper
Fred Carlin
Concettina Carnevale
Barb Carpenter
Martin and Kathleen Carvan
Bryan Cash
Jean Centers
James M. Chamberlain
Robert and Linda Chase
Ann Chisko
John and Vickie Cimprich
John and Elinor Comer
Starr and Deborah Comstock
Warren Conley
Michael and Linda Conner
Katy Cookendorfer
Gary Cooper
David and Kristin Coppage
Mary Corken
Amanda Couch
Sharon Craig
Joe and Ellen Creaghead
David Crotty and Joan Von Handorf
Pat Crouch
Kathleen W. Culp
Brittany Cummings
Jackson and Marian Cummins
Steve Curley
James and Karen
Olive R. Danielson
Karen and Michael Daugherty
Michael Daugherty
Ronald Davenport
Katie Davidson
Sally and David Davidson
David and Sandy Davis
Patrick Day
Jennifer Dean
Cynthia Deangelis
Mary Kay Delgado
Tim Delph
Ann Dempsey
Cindy and Gregory Densler
Libby Dermody
Jim and Marilyn Devenny
John and Marsha DeWitt
Lois Didier
Laurel DiGiovanni
John and Jane Domaschko

donations

William and Mary Ruth Donnermeyer
 Kay and Bill Dorning
 Eugene and Diana Douglas
 Pamela Doyle
 Ralph and Irma Drees
 Emilie Dressler
 Ronald and Emily Droege
 Thomas Due
 Cheryl Duncan
 Lori and William Dunsing
 Kathryn Dupps
 Noreen Durrani
 Michael and Deborah Dutle
 Betsy Dyas
 Shauna Dynes
 Carolyn Eagen
 Kevin Eberly
 Theresa Eberly
 Jim and Evie Eck
 Maria Eder
 Edward and Deborah Elicker
 Steve and Mary Ellen Elsbernd
 Ruby Emmelhainz
 Gregory and Margaret Engelman
 Jason and Julie Enzweiler
 Donna Esposito
 Louis and Marilyn Esselman
 Carole Ewald
 Martha Ewing
 Chris Farfsing
 Robert Farfsing
 Lynn Faulkner
 Carol Fausz
 Scott and Janet Fedders
 James and Jo Ann Fedor
 Joe Feldhaus
 Diane Feldman
 Vanessa Felipe-Morales
 Megan Fields
 Laurel Fitzgerald
 Cookie Flower
 Thomas and Brenda Foley
 Michaela Forsythe
 Keith and Judith Fortner
 David Foshee
 Mikey Frank
 Steve Franzen
 Sarah Froelich
 Timothy and Beverly Frommeyer
 Matthew Gabis
 Bob Gable
 Ted and Rachael Gaeddert
 Alexis Galligan
 Nicholas and Peggy Gamble
 Mary Gamstetter
 June Gaub
 H. Jane Gavin
 Leonardo Geraci
 Kenneth Glavan
 Richard and Mary Winn-Godar
 Mary Goebel
 Dan Goetz
 Marie Goodchild
 Denise Govan
 Dan Graves
 Roger Grein
 Sandy Grieme
 Brian Griffin
 Chris Griffin
 Dana Griffin
 Robert and Carol Griffin
 Donald Grigsby
 Robert and Maryann Grimm

Frank and Sue Groneck
 Mark and Catherine Guilfoyle
 Martin and Deborah Haas
 Martin Haas
 Janet Hackman
 Joan Hadorn
 Allan and Jean Hale
 Erin Hammond
 Margaret Hampton
 Tim Haney
 Michele Hanna
 Thomas and Juanita Hanna
 Dennis and Lorna Harrell
 Mary Beth Harrington
 Christopher and Emily Harris
 Alan and Janet Hartman
 Cynthia Hassan
 Siegfried and Barbara Hausladen
 Julia Heditsian
 Roger and Mary Hehman
 Tom and Elizabeth Heist
 Warren and Mary Heist
 Catherine Hellmuth
 Aneta Helmer
 Ann Hemmer
 Kevin and Carol Hemmer
 Robert and Patricia Hemmer
 Kristen Hency
 Jeffrey and Janet Henderson
 Douglas and Lisa Henkes
 David Hickey
 Michelle Hickey
 Michael and Mary Higgins
 Terry Hirschfeld and Gerald Sigl
 Kevin and Alyse Hoffer
 Robert M. Hoffer
 Bonnie Hoffman
 Marilyn Hogue
 Kelly Holden
 Stephanie Holden
 Robert B. and Donna M. Horine III
 Robert M. and Kristin Horine
 Carl and Bonnie Hosea
 James and Florence Howard
 Ddiana Howlett
 Michael and Carolyn Hoyt
 Stephanie Hreha
 Delilah Huber
 Judith Hunkemoeller
 Sara Hunt
 Tom Huster
 Carol Imbus
 Ethel Ingalls
 Amy Inman
 Kristen Inman
 Brenda and L. D. Israel
 Patricia Jackson
 Terri Jameson
 Kathy Janson
 Jeff Johnson
 Robert Johnson
 Sharon Johnson
 Janet Josken
 Sara and Philip Kahmann
 Sarah Kaising
 Frank and Kathy Kallmeyer
 Meghan Kaskoun
 Stewart Katz
 Thomas and Carol Kearns
 Rob Keenan
 Debra Kees
 Kris Kees
 John and Karen Keiter

Joan Keller
 Marcia Keller
 Don and Rebecca Kelm
 Dan Kemble
 Laroy and Kathy Kendall
 Allison and Mick Kennedy
 Dennis and Laura Kennedy
 James and Mary Kersteiner
 Fannie Kidd
 Angela Kiger
 Rita Kinder
 Brittaney King
 Edwin and Brittaney King
 Julie A. King
 Judith Kinman
 Kenneth Kinman
 Robert and Janet Kinney
 Leanne Kim
 Gerald and Dana Kirpes
 Lauren Kiser-Green
 Matt and Mary Jean Klein
 Jody and Joesph Kline
 Mary Klingenberg
 Susan Klumper
 Jane Kneipp
 Steven Kneipp
 John and Rhonda Knochelmann
 Diana Knoebber
 Joyce Knoebber
 Margaret and Thomas Knorr
 Mike Koch
 Julia Koenig
 Charles and Ruth Korzenborn
 Sherra and Kevin Koshiol
 Steven Kramer
 Joseph Kreidler
 Tom Kruer and Karen Zerhusen Kruer
 Randolph Krumm
 Ken and Sandra Krumpelman
 Linda Krumpelman
 Kelly Kusch
 Marsha Ladenburger
 Kara Lafferty
 Roger Lambert
 Michael and Carol Landwehr
 Bonnie J. Lanham
 Paul and Rose Lankisch
 Elizabeth Gray LaPash
 Joe and Julie Larger
 Robert and Karen Lavelle
 Paul and Joanna Layton
 Jim Lazzari
 Elaine Ledbetter
 Patricia Lee
 Jeffrey Lehnhardt
 Ralph and Kathryn Lemley
 Neil and Sarah Leyshock
 Rick and Carol Leyshock
 Sonya Lichtenstein
 Jacqueline M. Limke
 Karen Linn
 Jerome and Noreen Linneman
 Katie and Jim Litmer
 Maggie Lockard
 Elizabeth Loehnen
 Keith and Catherine Logsdon
 Mary Ann Lohre
 Michelle Long
 T. Jean Longshore
 Stephen and Jane Lorenz
 Lawrence and Dolores Losey
 Robert and Sallie Lotz
 Brandy Lovensheimer

Alvin and Gloria Ludwig
 Jack and Linda Lundy
 Bob Lutkenhoff
 Linda Lux
 Mary Kay Lynch
 Doug and Janie Lyons
 Evelyn Macklin
 Joyce Magary
 Kathleen Mahannah
 Jean Majors
 Karen Malott
 David and Kathy Manning
 Edward and Mary Manogue
 Steve and Charlotte Markovich
 Walter and Marilyn Marksberry
 Chris and Jennifer Markus
 Ashley Marler
 Peggy S. Marquardt
 Cindy Martin
 Katie Massa
 Betty and Steele Mattingly
 Mary Ellen Matts
 Jennifer Maxey
 Anne McBee
 Kim McBride
 Michelle McBride
 John and Carrie McCoy
 Patrick J. McCullough
 Clifford and Bernett McDine
 Linda Mcdyer
 Mildred McElligott
 Rodney McGlasson
 Thomas and Judith McGovern
 Stacey McMath
 James Mcquillan
 David and Patricia Meier
 Paul and Marybeth Meisenhelder
 Michael Menke
 Norbert Menke
 Thomas and Janet Mentrup
 Robyn Mercer
 Beverly Merrill
 Donna Meyer
 George and Donna Mezera
 Richard and Gail Michalak
 Edward Miles
 Joshua Miller
 Linda Miller
 Paul and Cindy Miller
 William Miller
 Debra Mineer
 Martin and Melissa Mitchell
 Robert Mitts
 Deborah Moellman
 Parrish Monk
 Martin and Deanna Moon
 Morgan and Carol Moore
 Donald Morgan
 Janice Mortenson
 Neal and Kimberly Moser
 Kathy Mueller
 Ed and Carol Muench
 Scott Munich
 Heidi Murley
 Sue Murphy and Sherri Sink
 Denna Neace
 Claude A. Neagle
 Mary Ann Nestheide
 Donald and Peggy Niehaus
 Sandy Niemiec
 Jenny Nies
 Frank Niolet

Harish Nirujogi
 John Noll
 Stephen and Cathy O'Bryan
 Margaret O'Conner Trust
 Margaret Owens
 Polly Lusk Page
 Charles Pagnard
 Victor Parker
 David Pelgen
 Steve Pendery
 Janet Perkins
 Susan Perkins
 Muriel Peterman
 Marie and Adam Piccola
 Mary Ann Pietromonaco
 Pamela Porco
 Susan Porter
 Jim Poston
 Thomas A. Poulos
 Katie Preston
 Tammy Price
 Rita Coveney and Robert Pudenz
 John and Grace Rademacher
 Bryant and Dawn Ramirez
 Tom and Carol Rasp
 Charlotte Read
 Amy Reber
 Dave and Linda Rechten
 Ted and Rebecca Reckers
 Jim and Kathy Reeves
 Amber Reilly
 Mark and Mary Reitzes
 Carolyn Rennekamp
 Beverly A. Reno and Sheila R. Howe
 Beverly Reno
 Barbara Rettig
 Thomas and Sara Reynolds
 Jay and Marilyn Rice
 Emma Rich
 Yvonne Rich
 Patricia and Charles Richards
 Kathleen Rickels
 Brian and Carol Rieger
 Yair Riemer
 Brett Riggins
 Peter Rightmire
 Michael and Barbara Riley
 Kay Roberts
 Jim and Susan Roebker
 Ellen and Joe Roesel
 Jessica Rogers
 Laura Rohling
 Don and Rebecca Rolf
 Beth Rose
 Kelly R. Rose
 Sue Rose
 Kathleen Rosing
 Elizabeth Rosplock
 John and Barbara Rossi
 Robert and Deborah Rottman
 Judy Rouse
 Nancy Rowles
 Larry and Tina Royalty
 Albert Ruschman
 Steve and Sandra Russell
 Meg Ruttle
 Nancy Ryan
 Leah Saalfeld
 Shirley Sanders
 Abbey Sanford
 Dennis Sansom
 Rina Saperstein and Jeffrey Davis
 Sharon Schaefer

Kathryn Schaller and Kathleen Washam
 William Scharf
 Paul and Mary Lee Scheper
 John and Patricia Schilling
 David Schisla
 Diana Schloemer
 Richard and Mary Kay Schmeing
 Cathy Schmidt
 Karen Schmidt
 Robert and Deborah Schoenhof
 Brian Schofield
 Betsy and Steve Schuler
 Lynda Schunder
 William and Joan Schunder
 J.A. and Carissa Schutzman
 Gerry Schwarte
 Leonard and Ruth Schwarte
 Joy and David Schwartz
 Paul and Jo Ann Schwartz
 Mary R. Schwegman
 John Schwing
 Stephanie Sciamanna
 Terrence Scott
 Michelle Seaman
 Diane and Thomas Seiter
 Vicki Seligman
 Elaine Semancik
 Nadine Sexton
 Lois Shannon
 John and Jackie Shea
 Jane Sheehan
 Rusty Sheehan
 Cassie Shepherd
 William A. Sherman
 Julie Shifman
 Kevin Shoupe
 Gregory and Katie Shumate
 Terry and Maggie Sievers
 Melissa Singer-Reed
 Michael Sketch
 Brad and Donna Slabaugh
 Jenny Slusher
 Karen Smith
 Rita Smith
 Bonnie Smyth
 Tara Sorrell
 Viola Sowell
 Edward and Arlene Sparks
 David and Jane Spaulding
 Stephen and Vicki Spaulding
 Emily Spence
 James W. and Gail Spence, Jr.
 Lori Spence
 Ruth I. Spencer
 Nancy Spivey
 Brenda Staggs
 Vincent and Ann Stamp
 Katherine B. Starks
 Nancy Staurowsky
 Douglas and Barb Stephens
 Jay and Mary Stevens
 Robert and Cathy Stevens
 Tasia Stiegelmeier
 Trevor Stith
 Lynn Stockholm
 Joseph and Nancy Stratman
 G. Stricker II
 Stacie and Michael Strotman
 Julie Stroup
 Virginia Strunk
 Michael and Melinda Sucher
 David Suetholtz
 Gabrielle Summe

Amy Sutter
 Roger and Elaine Sutton
 Susanne Sweikata
 Mary Sybert
 Marie Tagher
 Ginny Tallent
 Jeanette Tanner
 Dick and Jeanne-Marie Tapke
 Trey and Stacy Tapke
 Charles and Joyce Tappan
 Angie Taylor
 Diana Taylor
 Margaret Tedder
 Joan Teeling
 Kathleen M. Terlau
 John Thaman
 Kevin and Kelly Theissen
 Rebecca Thomas
 Paul and Adeline Throop
 Lawrence and Mary Ann Tiemeier
 Will Timmer
 Diane Timon
 Thomas and Lisa Tingley
 Judy and Bill Toeppen
 Julia Toy
 Richard and Barbara Traud
 Christine Trenholm
 Sylvia Troescher
 Connie Trounstone
 Marilyn Trusty
 Lisa Tucker
 Ronald Turner
 Brian VanArsdale
 Denny and Patty VanArsdale
 Tina Van Sant
 Harold and Linda Vaughn
 Brian Veneman
 Michael Veneman
 Linda Verst
 Philip Viars
 Jon and Shelly Voet
 Jon and Jane Votel
 Karen Wachs
 Janet Wadsworth
 Stephanie Wagner
 Nancy Wallace
 Linda Walsh
 Julie Walter
 Tammy Waltermann
 Jerry and Katherine Warner
 Robert Warnick
 Debra Wash
 Mary Wash
 Jamila Watson
 Kristopher Watson
 Terri Watson
 Thomas Watts
 Rosa Weaver
 Boby Weber
 Amelia Wehr
 Gregory and Diane Wehrman
 James Wells
 Bob and Gerri Wenert
 Shelley Werner
 Stephen Wertz
 Pat Wheatley
 Michael and Mary Jo Whelan
 Alfred White
 George Whitton
 Michael Wilhelm
 Janice Wilkerson
 Kay Willenbrink
 Stuart and Jennifer Willis

Amber Wilmoth
 Joseph Winterberg
 Doug and Linda Wisner
 Steven and Ashley Withers
 Paul Witte
 Charlotte Wohlwender
 Randy Wolf
 Ralph and Arline Wolff
 Kathy and Ken Woltermann
 Susan and Angela Wong
 Bonnie Woodfin
 Michael Woodrum
 Charlie and Ginny Yancey
 Susan Yelich
 Todd York
 Rebecca Young
 Sarah Young
 Karola Yourison
 Paula Zalla
 Sally Zeck
 Christopher and Bridget Zeigler
 Anthony and Gerry Zembrodt
 Josh Zembrodt
 Nicholas and Peggy Ziegler
 Wilbert Ziegler
 Archway's Taylor Mill, LLC
 B&E Decorating Center
 Baird Foundation Inc.
 Bircus Brewing Co.
 Booksellers Enterprises
 Bullittsville Christian Church
 City Barbeque, LLC
 Colonial Cottage Inn, Inc.
 Comprehensive Community Child Care
 Congregation of Divine Providence
 Country Cruisers Car Club Inc.
 Crafts & Vines LLC
 Darkness Brewing, LLC
 Dixie Chili
 Dobbling, Muehlenkamp and Erschell, INC.
 F.C.C. Covington
 First Christian Church
 First Financial Bank Fun Committee
 Gateway Foundation Inc.
 Girls Pint Out
 Gypsy's
 Highland Products LLC
 Immaculate Heart of Mary
 IT Supply Solutions
 Jonah Development Corp.
 Kordenbrock Interiors
 KPMG
 Legacy Financial Advisors, Inc.
 Linnemann Funeral Homes
 L'Oreal USA
 M & K Apartments
 Macy's Inc.
 McD Concrete Enterprises LLC
 Mother of God Church
 New Friends of Northern Kentucky
 Northminster Presbyterian Church
 Otto's
 Remke Markets
 Rhinegeist Brewery
 Robert L. Davis Trust
 Rocked Out Construction, LLC
 Runyan Memorial Christian Church
 Schneller Plumbing Heating Air
 Sisters of Notre Dame
 St. Henry District High School
 St. John Church
 St. Joseph School
 St. Pius X Parish

donations

Strategic Employee Benefit
Synchrony Financial
The 1441 Group, LLC
The Benevity Community Impact
Fund
Travelers Employee Giving
Campaign
Villa Madonna Academy
Vintage Salon Spa, Inc.
Vision One

IN-KIND DONORS

Anonymous
Annette Abraham
Meghan Ackermann
John Alig
Janet Allgeier
Jacqueline Allshouse
Ward and Ashley Anderson
Doug and Nancy Armbruster
Nancy Atkinson
Doreen Bayliff
Julane Becker
Laura Bommerito
Tonya Borgatti
Meredith Brennan
Bressler and Company
Dale Brown
Pam Bucher
Kasha Burns
Roberta Bush
Karen and Terry Cady
Laura Canter
Louise and Eric Canter
Terry and Cindy Carl
Brenna Carson
Steve Carter
Anthony Castellano
Heather Chisenhall
Lee Cline
Tricia Cogswell
Alexandra Coldiron
Sterling Colvin
Sandra Combs
Cheryl Coyle
Kim Crail
Karen and Michael Daugherty
Ronald Davenport
Jan Davenport
Jennifer Dean
Elizabeth Dean
Natalie Denham
Mary Ann Donoghue
Mike Downing
Lori and William Dunsing
Linda Durrett
Carolyn Eagen
Mary Erickson
Tasha Evans
Jayne Feldman
First Church of Christ
Christiana Fischer
Laurel Fitzgerald
Stefanie Foppe
Tommy Foster
Robert Frey
Cecilia Frihoffer
Paige Fryman
Laura Gall
Gary and L Gasper
Gray Middle School

Chris and Melinda Greenwood
John and Juanita Griffin
Dana Griffin
Pete Grosser
Kim Guffey
Rubin Hall
Kevin Hannon
Sela Hansen
Megan Hardy
Yasmeen Harrison
Kristie Haskell-Worrel
Tom and Elizabeth Heist
Pat and Bill Hemmer
Ann Hemmer
Hugh and Jeanne Henry
Sherrie Heringer
Lorece Hoffman
Glenn Holten
Katrina Holtmeier
Robert M. and Kristin Horine
Roland Howard
Daniel Hutchens
Carol Imbus
Kristen Inman
Terri Jameson
Andrea Jupina
Frank Kallmeyer
Floyd Keller
Jack and Sandy Kenkel
Edwin and Brittaney King
Sara Knapke
Katie Knochelmann
John Kreidler
Mary Lynn Lampke
Billie Lepisto
Payton Lighthall
Keith Line
Tina Malone
Andrea Martin
Linda Merrel
Lawrence Metz
John and Kathleen Morley
Julie Mueller
Kathy Mulcare
Jennifer Muncie
Haileigh Noll
Robin Parker
Becca Perez
Melissa Pertry
Hannah Peters
Shari Petrie
Marie and Adam Piccola
Kristina Poage
Katie Preston
Cathy Price
Lisa Raziano
Ted and Rebecca Reckers
Dee Reinert
Cyndie Robbins
Kelly Rose
John Scheper
Terri Schoborg
Vicky Schooler
Ann Schrage
Samantha Schultz
Sherri Sink
Camille Smith
Karen and Gary Smith
Bonnie Smyth
Elizabeth Snyder

Joan Speller
St. Pius X Parish
St. Timothy Parish
Sarah Staggs
Shannon Stahl
Ken Stambaugh
April Sterling
Strategic Employee Benefits
Darlene Summe
Gabrielle Summe
David Swan
Tablespoon Cooking Co.
Craig Tanis
TANK
Julie Tapke Dusing
Adrian Tarvin
Angie Taylor
Taylor Mill UMC
Nicole Tepe
Lisa Thacker
The Cincinnati Woman's Club
The Village Pub
Thomas More University
Bridget Thornsburg
Amber Torres
Trinity Episcopal Church
United Way
USOCSO-CVG
Villa Madonna Academy
Leann Vogelpohl
Greg Walkenhorst
Colleen Walroth
Zach Warth
Chuck Weidner
Welcome House Outreach
Committee
Pat Wheatley
Libby Wick
Marc Williams
Candace Willoughby
Ashley Withers
Taylor Dantes
Jeffery Wolf
Haley Woodruff
Sandy Woods
Jennifer Wright
Gina Wulfack
Charlie and Ginny Yancey
Sally Zeck
Bill and Jean Zeck
Matt and Joy Zeck
Angela Ziegler
Anton Zink



STAFF MEMBERS

22

Leadership Team

Danielle Amrine, Executive Director
Candace Aulick, Director of Program Operations
Justin Beale, Director of Program Operations
Elizabeth LaPash, Compliance and HR Director
Beverly Merrill, Director of Housing Services
Kelly Rose, Development & Marketing Director
Brian Van Arsdale, Operations Director

Administration

Ashley Anderson, Development Grant Writer
Kirsten Auch, Accounting & Payroll Supervisor
Sara Kahmann, Development Coordinator
Jasmine Murdoch, Accounting Clerk
Kay Roberts, Data & Technology Specialist
Roseanna Yarnell, Receptionist

Service Coordination

David Bazler, Service Coordinator
Sierra Brown, Service Coordinator
Dan Clifford, Assessment & Resource Coordinator
Amanda Couch, Service Coordinator Supervisor
Connor Creaghead, Outreach Service Coordinator
Julie Doyle, Intensive Outreach Service Coordinator
Delores Quevedo, Service Coordinator Assistant

Income & Benefits

JP Decker, Street Outreach Service Coordinator
Chris Hammann, Street Outreach Service Coordinator
Christina Koopman, Benefits Team Lead
Robyn Mercer, Payee Service Coordinator
Susan Ostendorf, Social Security Outreach Assistant
Andrea Price, Payee Account Manager
Dayna Schambach, Social Security Outreach Specialist
Kashauna Shepherd, Social Security Outreach Specialist
Ashley Withers, Payee Service Coordinator

Housing & Shelter

Kenya Anderson, Shelter Advocate
Taylor Bray, Shelter Advocate-Reserve
Karin Brooks, Shelter Advocate
Tonya Brooks, Shelter Advocate-Reserve
Yolanda Hamza, Rapid Re-Housing Service Coordinator
Katie Henderson, Shelter Advocate-Reserve
Beth Johnson, Shelter Advocate
Chrystal Kelow, Shelter Advocate
Crystal Kirkendall, Shelter Cook
Misty Lester, Shelter Advocate
Kenyatta Sims, Shelter Advocate-Reserve
Julie Walter, Housing Staff & Facilities Supervisor
Emma Wilson, Shelter Service Coordinator
Steven Withers, Housing Navigator
Carrie Wynn, Shelter Advocate



** represents Welcome House employees as of December 31, 2018*

A special thank you to our staff who work tirelessly to make our mission of ending homelessness possible. It is because of you that we are truly able to take our clients from housing uncertainty to housing stability. You are appreciated more than you will ever know.

Ways to get involved:

volunteer
donate
ADVOCATE



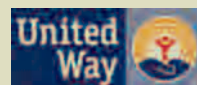
Ending
Homelessness



Like or follow us for
more information
and to stay up to
date on everything
Welcome House.

☎ 859.431.8717 📠 859.431.6297
205 W Pike St. | Covington, KY 41011

🌐 WelcomeHouseKY.org



Agency Partner

