

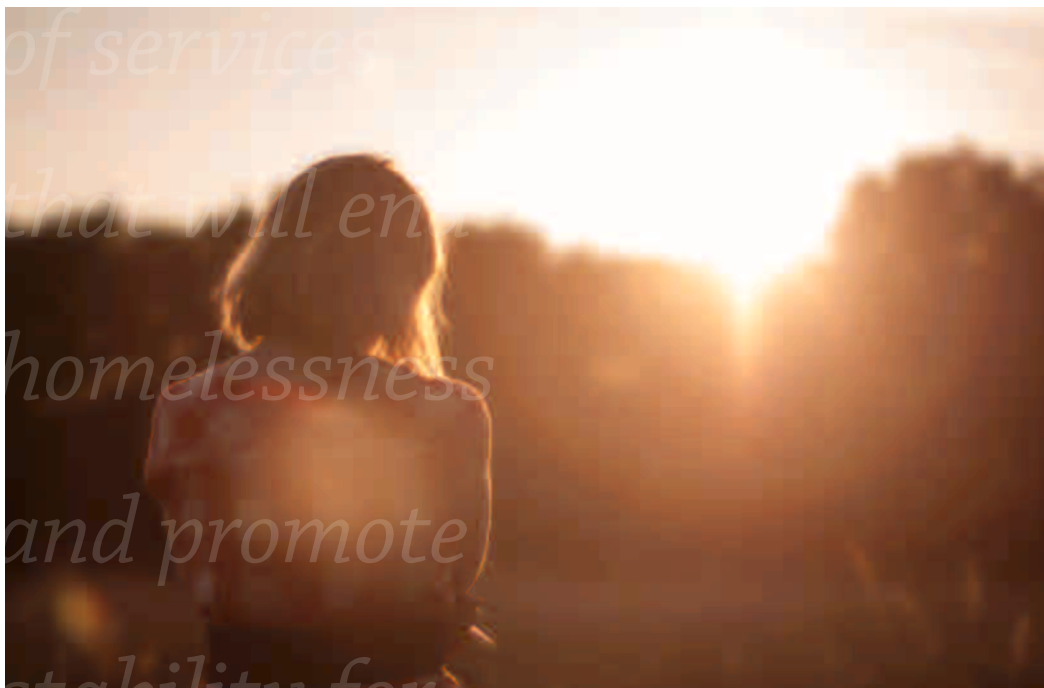


*Ending  
Homelessness*

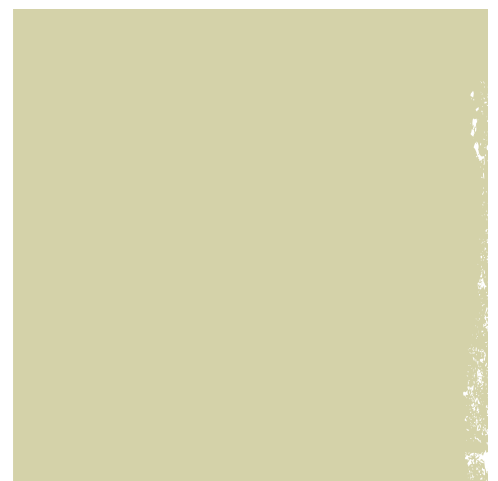
*Our mission  
is to provide  
a continuum*

# ANNUAL REPORT

# 2017



*each person  
we serve*



*Working to* **end**  
**HOMELESSNESS**  
*in* **NORTHERN  
KENTUCKY**  
*by guiding our clients*  
**FROM** *housing  
uncertainty*  
**TO HOUSING  
STABILITY**

# Letter from Danielle Amrine, Executive Director



## *Change starts with us.*

*"Turns out, real life is a little bit more complicated than a slogan on a bumper sticker. Real life is messy. We all have limitations, we all make mistakes, which means - hey, glass half full! - We all have a lot in common. And the more we try to understand one another, the more exceptional each of us will be. But we have to try. So no matter what type of animal you are; from the biggest elephant, to our first fox, I implore you - try. Try to make the world a better place. Look inside yourself and recognize that change starts with you. It starts with me. It starts with all of us." -Zootopia*

I have always felt like my duty on this earth was to make the world a better place. What does that mean? How does one go about making the world a better place? Since taking the helm of Welcome House just a short ten months ago, I've had the wonderful opportunity to see just how we make this world a better place every single day.

Sometimes in society we tend to focus so much on what makes us different or better than someone else, instead of trying to find out what connects us. Did you know that just 39% of Americans say they have enough savings to cover a \$1,000 emergency room visit or car repair? And 44% of people said they could not cover an unexpected \$400 emergency expense or would rely on borrowing or selling something to do so? Millions of Americans are one paycheck away from the street. I implore you to take time to find what connects you to your neighbor, to a child, to a student, to a single working mother, to your server at a restaurant, to your cashier, to the person standing in front of you in line, to a homeless person on the street. Explore those connections and celebrate them. Validate your brother or sister's existence. We all want to feel seen, heard, and recognized as a valued person in our society, regardless of our status or rank. Reconnecting and appreciating humankind will make this world a better place. At Welcome House, we do this every day, not just with the people we serve, but with our partner organizations, our volunteers, and our staff.

No matter where we are in life, no matter what our challenges are, no matter what race you are, no matter what sexuality you are, no matter what gender you are, no matter if you are housed or unhoused — you have the power to make the world a better place. Look inside yourself and PRACTICE. Making the world a better place will not happen overnight, but just think if even fifty percent of people committed to practicing five acts of kindness a day, how much better would our world be? Don't wait, start TODAY. Join us! Join our staff, our 1,000+ clients, and our 1,100 volunteers that are committed to making our world a better place, one act of kindness at a time.

"Look inside yourself and recognize that change starts with you. It starts with me. It starts with all of us."

Danielle Amrine  
Executive Director

## **Overall Agency:**

- Last year Welcome House served 1,470 individuals; 23% were children.
- 100% of our clients were homeless and living in poverty; 97% had an annual income of \$10,000 or less

support

CHALLENGES

## SERVICE COORDINATION

The Service Coordination area provides assessment, outreach, case planning, financial education/budgeting, housing counseling, employment support, and community referrals services. Service Coordinators work directly with residents staying at the Welcome House shelter and other local shelters, as well as individuals and families who are homeless or at-risk of becoming homeless.

Staff members work with individuals and families to obtain employment and/or benefits; locate affordable child care options; foster self-determination and stability; and assist in obtaining and maintaining permanent housing. Service Coordinators establish relationships with local subsidized housing facilities, landlords, and employers. In addition, Service Coordinators also assist clients in searching for housing, filling out applications, and providing transportation.

While clients are experiencing homelessness, Service Coordinators meet with clients weekly (sometimes daily), to provide support and direction. After clients obtain stable and affordable housing, they are offered additional in-home visits to help keep them on their targeted plan of self-sufficiency and to provide additional support for up to six months. The Service Coordination area works toward the Welcome House mission by meeting clients where they are in their journey of homelessness and offering a continuum of services to transition them from insecure housing into stable housing.

### *Client Story*

Lenora came to Welcome House extremely ill and living on the streets. Bound to her wheel chair, Lenora had limited use of her legs and had to wear a colostomy bag. Relying on the help of other people living on the street, she was increasingly becoming sicker while living outside during the cold winter months. Surviving only by the help of individuals who would allow her to spend the night, she was ultimately made to leave the next morning to spend the entire day in the elements.

When Lenora was assigned her service coordinator, it was evident that time was of the essence and that if we didn't help Lenora get off the streets she would probably end up in the hospital, or even worse, dying. Working almost daily with her service coordinator to find housing, we helped Lenora find stable housing and appropriate medical care. Today, Lenora has maintained her health and has been housed for over six months.

### **In 2017...**

- Service Coordination worked with 74 families with children and 436 total households (606 individuals; 436 adults and 170 children)
- 57% of households exited into permanent housing
- 34% increased their total income
- 95% of adults accessed public benefits



# programs & services

## INCOME & BENEFITS

### *Representative Payee Program*

This program assists persons with mental and/or physical disabilities by direct management of their disability income because they do not have the capacity to manage their monthly bills. Welcome House acts as a financial agent (called a Payee) for clients without an appropriate adult in their life to fulfill this role. Payees pay rent, utilities, and other monthly bills on the clients' behalf. The Social Security Administration and the Veterans Administration both require that some persons receiving disability payments have a Payee to represent them. Without a Payee, the client cannot receive disability income or medical coverage. The overall results of the program focus on improved quality of life and stabilization of a vulnerable population. Clients often transition from living on the streets with debilitating illnesses to having an income, housing, medical coverage, and the support necessary to lead a more independent life.

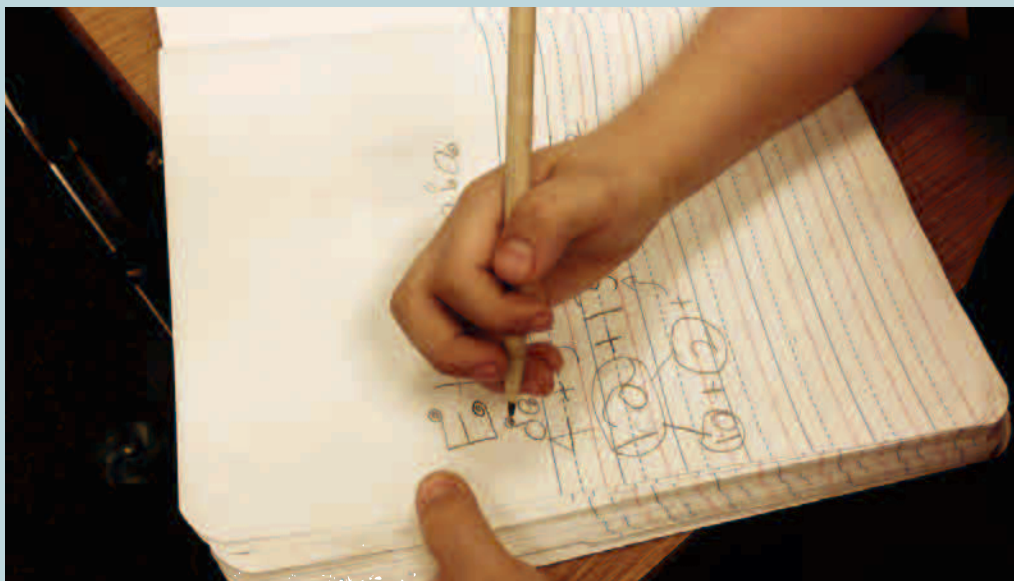
#### *In 2017...*

- *The Payee Program assisted 130 people with physical and/or mental disabilities by direct management of their disability income.*
- *100% of payees maintained housing and developed a budget and savings plan*
- *79% of Payee Clients were in affordable housing; defined as paying less than 30% of their income on rent*

### *Client Story*

Kevin, 40, grew up with several developmental disabilities, including PTSD and depression. Throughout his life, he bounced from home to home, never really having the support network that would help him navigate some of the instabilities that were happening in his life. In his adult life, Kevin found himself alone and living on the streets. Navigating his untreated disabilities, along with being street homeless proved to be too much for Kevin.

When he came to the Welcome House Payee program, Kevin felt he was at the end of his rope and on the brink of giving up. With the help of his Payee Service Coordinator, we were able to get Kevin on SSDI, help him with his finances, and house him at our King's Crossing location. Everyday Kevin helps Welcome House staff with little tasks or chores around the building to show his gratitude for his home and for the support he has found within our walls.



# programs & services

## Outreach Program

**The Outreach Program**, called Open Door, has been active since July 11, 2017. It is an interdisciplinary team composed of 3 members – a Kenton County/Campbell County outreach worker, a Boone County outreach worker and a Nurse Practitioner. Holistic street-based outreach has been a long standing gap that was lacking in previous iterations of outreach teams in the past. Having this understanding allows us to address not only housing, but also physical and emotional needs. Our goal is to bring emergency stabilization services to the aforementioned counties, and also plan to expand to the rural counties. The outreach team's priority is to spend time searching for those experiencing homeless as well as to build relationships with them as we address physical and emotional needs. Another priority where the team shines is our goal of educating and connecting community resources together. The team continues to knock down barriers by negating the transportation barrier by meeting the clients where they are in the community.

### *In 2017...*

- 79 individuals were served through the Outreach Program
- 65% of those served were men
- 35% of those served were women

**The Social Security Outreach Program (SSO)** uses the S.O.A.R. (Social Security Outreach, Access & Recovery) method to complete Supplemental Security Income (SSI) and Social Security Disability Insurance (SSDI) applications for individuals who have mental and/or physical disabilities and who are homeless or at-risk of becoming homeless. Partnering with the Social Security Administration and Disability Determination Services, the program seeks to identify, support, and alleviate individuals from poverty and homelessness by helping to provide stable, permanent income, access to medical insurance programs such as Medicaid and Medicare, and social services coordination.

### *In 2017...*

- 127 applicants were assisted in applying for social security benefits last year.

## Client Story

Steven, 65 and street homeless, had hit a wall when it came to obtaining social security (SSI). The bureaucracy surrounding him receiving benefits was becoming too much for Steven and he was close to resigning himself to spending the rest of his life on the streets. Wanting to give his application one last try, Steven was referred to our Social Security Outreach Program (S.O.A.R., Social Security Outreach, Access & Recovery).

After two weeks of working with his coordinator, Steven's claim was filed and three weeks after that he was approved for SSI benefits. While waiting for his benefits to start, Welcome House was able to supplement Steven with new clothing, food, and hygiene items while he stayed at the local Emergency Shelter. Once funds started to arrive, Welcome House was able to find him stable housing. After many years on the street, Steven now has a roof over his head and a place to call home.



generosity





## HOUSING

### *Temporary Housing*

#### **Shelter**

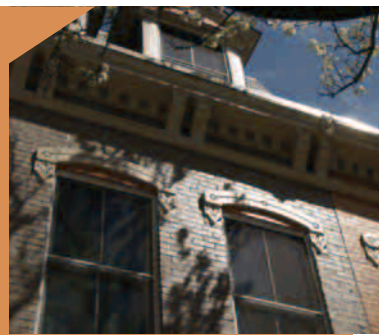
The Welcome House Emergency Shelter provides a safe place to stay for approximately 30 homeless women and children a night. Residents of the Shelter work with Service Coordinators and other Welcome House staff to increase income and access affordable housing, while removing any challenges or barriers to success.

While working toward greater stability, clients are offered a safe place to live, nutritious meals, hygiene supplies, and extra assistance (such as help with transportation and referrals to area resources). Shelter residents benefit from the caring support of a 24-hour staff, volunteers, and donors who help meet their needs.

Of the 197 individuals served in 2017, 36% were under the age of 17. Children who stay in the Shelter (as well as those of other families served by the other Welcome House services) have the support of a staff member dedicated to meeting the needs and protecting the rights of homeless children and youth. Mothers are offered assistance in enrolling children into school and daycare, and in meeting the material needs of their children.

### *During their stay at the Shelter in 2017...*

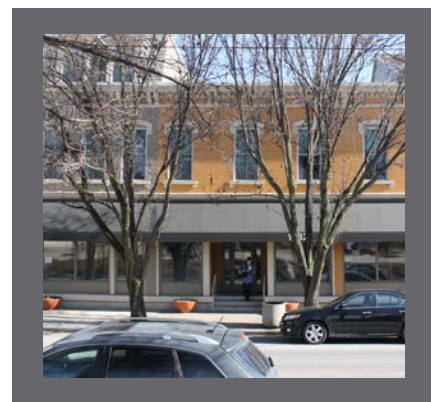
- 197 individuals stayed at the Emergency Shelter (126 adults and 71 children)
- The average length of stay at the Shelter was 41 days
- 99% of the households met and worked with a Service Coordinator to establish goals pertaining to income and housing
- 71% exited shelter into positive housing outcomes



### *Client Story*

All Nicole, 33, wanted to do was love and take care of her six year old daughter, Maddie. But being a single mom, lodging in a chaotic household with multiple family members, and living pay check to pay check kept Nicole from focusing her attention on the only person that mattered in her life.

When Nicole and Maddie came to the Welcome House Shelter for Homeless Women and Children, Nicole was able to receive the support needed to find her own housing, childcare, and even secure her own transportation to work. In the thirty days that they were here, Maddie and Nicole were able to live in a stable, caring environment where their needs were met and they never had to worry about where their next meal would come from. Today, Maddie and Nicole live in their own apartment, where Maddie has her own bed and, most important, a place to call home.



## *Affordable Permanent Housing*

### **King's Crossing Apartments**

Eight subsidized apartments (efficiency, 1, and 2 bedrooms) are located in the Eastside neighborhood of Covington. Tenants must be homeless at the time of application and a member of the household must have a disability.

### **Scattered Site Affordable Housing**

Twenty-three apartments (efficiency, 1, 2, 3, and 4 bedrooms) with subsidies are located in the Mainstrasse neighborhood of Covington, and 19 efficiency apartments are located in the Eastside neighborhood of Covington. Welcome House completely renovated these units to create a modern and updated living space.



### *In 2017...*

- 84 Individuals were served with Rapid Re-Housing Assistance and 96% obtained stable housing
- 13 individuals (9 households) were served at King's Crossing

### **Rapid Re-Housing**

This program provides rental assistance so that individuals and families can move quickly from a shelter or living on the streets into an apartment of their own. The assistance provided is customized to match the individual needs of each household; some households receive one-time assistance while others may receive assistance over several months until they are stable.

### *Client Story*

Patty, 55, was living on the streets for over 10 years with a mental illness. With the help from community members trying to find her housing, Patty ended up in our Shelter for Homeless Women and Children for three months while her service coordinator helped her apply for social security benefits. In the interim, we worked with Patty to find permanent supportive housing in one of our 23 Mainstrasse housing units. When the funding came through for Patty, she was immediately housed in one of our rehabbed apartments in Mainstrasse—which meant that Patty was able to stay in her community that rallied so hard around her. Patty now has a roof over her head and she is able to see her friends that she has met over the years, but return home to a safe and happy space.



# housing

## Specialized Housing

Opened in 1996, the **Gardens at Greenup** is a supportive housing program for adults pursuing their post-secondary education and their children. It is designed to strengthen families by providing affordable, subsidized housing with on-site support services, which includes case management, education planning and support, career planning, financial literacy, life skills training, and childcare. The program is unique in setting a holistic standard for self-sufficiency, including personal growth development, family activities, and building a community of support. Clients work on goals in the following areas: education, income, family support, self-sufficiency, and budgeting. In addition, residents are supported through the Women's Leadership Council of Greater Cincinnati with monthly events and mentoring opportunities. A resident may stay as long as they are fulfilling their education goals, though the majority has an average stay between 2-3 years. The length of stay is determined by the resident's progress toward goals and compliance with the program requirements.

### *In 2017...*

- Gardens at Greenup served 27 households
- 100% of residents increased access to eligible benefits
- 96% of the children demonstrated literacy improvement
- 90% of the children were enrolled in high-quality pre-school

## Client Story

Molly, 18, and Hailey, 2, found themselves jumping from couch to couch while Molly was trying to finish her high school degree. When Molly came to Welcome House in an effort to find housing, we were able to get her into our Garden's at Greenup program and provide her with permanent supportive housing in one of our 20 units located on Greenup Street in Covington. A year later, Molly is now attending a local college for her nursing degree and Hailey is enrolled in one of our pre-school childcare centers located right across the street from their apartment. Molly and Hailey now have the support to overcome any barriers that might arise and Molly hopes for a brighter future where she can provide the best life to Hailey.



S U P P O R T





Volunteers are essential to the success of Welcome House. Without the support and help from numerous individuals and groups, we would not be able to achieve all that we do.

In 2017, we were excited to host many corporate volunteer groups from the area for their company-wide days of service.

During the holiday season, Welcome House hosted multiple corporate volunteer groups from Fidant Wealth Partners, Sinkula Investments, Remke, FBT Law, and Bottom Line Systems. These corporate volunteer groups helped wrap gifts donated through our Adopt-A-Family program, and hosted holiday parties for the residents of the Shelter. Thanks to these volunteers, our clients and their children are able to celebrate regular holidays and maintain a sense of normalcy while they reside in the Shelter and as they work to rebuild their life after homelessness.

*In 2017, Welcome House had 1,117 total volunteers. Out of these 1,117 individuals, 675 volunteered in direct services and 442 in indirect services. These individuals contributed a total of 4,203 hours of volunteer work to Welcome House which is the equivalent of \$96,963 in cost-free assistance.*

## Volunteer Spotlight

Employees from L'Oreal's plant in Florence, Kentucky joined us multiple times throughout the year. In June, a group of employees spent an entire workday at Welcome House, helping to sort donations and painting bedrooms at our Shelter for Homeless Women and Children. That first day of volunteering ignited a new passion in those employees, who decided to return in November with bigger projects in mind. With the financial support of L'Oreal and those employees themselves, the group built new shelves for storing donations, new shelving in the bedroom closets at Shelter, they painted more bedrooms at Shelter, and installed a gazebo on the Shelter deck to provide shade.

We have many ways you can get involved with Welcome House. Whether you are an individual, a family or group of friends, or a corporate group, we have the volunteer opportunity for you! To learn more about these opportunities, please visit our website at [welcomehouseky.org](http://welcomehouseky.org).



# volunteers

## IN-KIND DONATIONS

In 2017 Welcome House received \$31,932 in food and non-food donations. Because of our generous donors, toys were available for our children in Shelter for their birthdays, hats and scarves were provided during the winter months, and every client was able to receive hygiene items when needed. However, we are always in need of new air mattresses, Pack N' Plays, and bedding. This year's donations helped provide the basic necessities to our clients so that they could focus on housing for them and their family.

Resource Bags continued to help support our clients in 2017. This form of an in-kind donation contains essential items pre-purchased and bagged by donors for delivery to Welcome House. Bags vary in theme and items, from food to household cleaning supplies, and help Welcome House direct service staff get resources out to clients faster. Last year, Welcome House received approximately 700 bags!



## WELCOME HOUSE OUTREACH

Welcome House Outreach, also referred to as the WHO, has been an auxiliary fundraising group for Welcome House since 1990. The WHO organizes and hosts the annual Summer Sunday event held the first Sunday in August and the WHO Shower held in April. The group is comprised of approximately thirty women who donate their time and energy toward making these events and their volunteer work successful. In 2017, the WHO raised over \$50,000 for Welcome House! In addition to their event support, the WHO also volunteers monthly by making a meal for the women and children in our shelter and contributes frequently to our in-kind donation efforts.



*They have been a strong source of support over the years and we are extremely thankful for their consistent support.*

Shawn Baker

Karen Cady

Laura Canter

Louise Canter

Cindy Carl

Karen Daugherty

Valerie Dyas

Dana Griffin

Juanita Griffin

Elizabeth Heist

Ann Hemmer

Pat Hemmer

Shannon Hill

Becky Hood

Kristen Inman

Terri Jameson

Brittaney King

June Kocsis

Melissa Moore

Marie Piccola

Rebecca Reckers

Betsy Schuler

Karen Smith

Tasia Steigelmeyer

Gabrielle Summe

Stacy Tapke

Alecia Webb-Edgington

Lynn Wurtz

Jean Zeck

family

Welcome House will be a leader in guiding

# LETTER FROM OUR BOARD CHAIRPERSON



Dear Friends,

This past year was highlighted by planning and engaging in leadership transition for Welcome House of Northern Kentucky. The year was filled with the emotion of celebrating Linda Young our retiring Executive Director and her immeasurable contributions to Welcome House as well as the excitement of welcoming Danielle Amrine, as the new CEO of Welcome House effective August 2017. Danielle's wealth of personal and professional social service and business experience have made the transition of leadership smooth and enhanced the strength of the Welcome House of Northern Kentucky mission.

Welcome House of Northern Kentucky continued to emphasize its role as a community planning partner with all entities in the region to further address the needs of all Welcome House clients. As statistics reflect homelessness has no boundaries and needs an approach that is not centered in one area but regionally. Welcome House continues to be a leader and set in motion strategies to expand its impact with clients and as a voice at the regional planning table working to implement an optimal service plan for clients and the community. Those strategies have focused on regular interaction and participation on newly formed committees at the planning level with leadership at the state, city, county and neighborhood level, as well as refining approaches to expand our footprint and seek out clients who may want to take advantage of services Welcome House provides.

One such client centered program that has flourished this past year is the mobile homeless outreach team, called Open Door, active since July 2017. It is an interdisciplinary team composed of 3 members – a Kenton County/Campbell County outreach worker, a Boone County outreach worker and a Nurse Practitioner. The outreach team's priority is to spend time searching the streets, river banks, over passes, woods and other areas of refuge for those experiencing homelessness. Then connecting these potential clients with our service providers to address housing needs as well as address their physical and emotional needs. This mobile interdisciplinary approach has resulted in success by reducing some transportation barriers to getting assistance and meeting with clients where they are in the community. The continued development of the outreach model implemented by Welcome House over the 2017 year has received much state and local attention from media and state representatives looking to educate the community at large and those in positions to assist in addressing homelessness. Personally, it is my intent to shadow the outreach team on one of their daily journeys.

Whether it is searching to find those in need or being a leading presence in the region to address homelessness none would be possible without the exhaustive efforts of the Welcome House of Northern Kentucky leadership team and staff. On behalf of the board we cherish those efforts. In closing the board and the entire organization would also like to thank our generous donors such as the WHO and the multitude of individual donors for their continued support. Your passion and support are essential to the impact delivered by Welcome House.

Warm Regards,

Tom Hausterman,  
Board Chairperson

## Board Members

Madelaine Blincoe  
Neil Blunt  
Melissa Bradley  
Katie Davidson  
Shauna Dynes

Diane Fritz  
Tom Hausterman, Chair  
Alyse Hoffer  
Kristin Horine  
Stephanie Huhn, Treasurer

Michelle Kolb  
Neil Leyshock, Secretary  
Chris Markus  
Selena Murdoch  
Wayne Onkst

Marie Schenkel  
Elizabeth Stewart-Pirone,  
Vice Chair  
Ginny Tallent  
Angie Taylor



# Events



## MARDI GRAS

Mercedes Benz of Fort Mitchell in partnership with Northern Kentucky Restaurant Association (NKRA) presented the 2th Annual Mardi Gras for Homeless Children on Thursday, February 23, 2017 at the Northern Kentucky Convention Center. The spectacular event hosted by the NKRA featured food and drink vendors and was a very memorable evening that generated revenue for Welcome House and two other nonprofits. The money raised from the event paid for meals for the children in our shelter. Aside from food and drink booths, there were amazing Mardi Gras beads and live and silent auction items available. In 2016, the Welcome House raised \$27,715 to help meet the needs of children staying at the Welcome House Emergency Shelter.

### Jester Sponsors

Fidant Wealth Partners  
Sinkula

### Platinum Sponsors

Spectrum Reach  
Steve Meyer  
BlueLyte

### Gold Sponsors

Aaron Broomall  
Anthem Medicaid  
The Merrill & Kistner Families  
AXA Advisors  
Custom Design Benefits

Michelle Kolb  
Neil Leyshock  
Passport Health Plan  
RSVP Home Care

Signature Hardware  
Trinity Episcopal Church  
TRIVACO  
Welcome House Outreach



## ANNUAL SHOWER

Playing off the idea of a traditional bridal or baby shower, this event is hosted by the WHO (Welcome House Outreach) with the purpose of bringing in-kind donations to Welcome House for the residents of Shelter. In 2017, the Shower speaker was Sharmili Reddy. As Fort Mitchell City Administrator, Sharmili Reddy shared her journey of immigrating to the U.S., opening doors to opportunity and leading the vision for the region. Attendees brought a new item from the invite wish list – such as comforter sets, bath towels, pack and plays, and much more. These items are extremely important as our clients move into stable housing. Instead of spending their limited funds on basic household necessities, they are able to save this money for their down payment, furniture, or any number of other moving and living expenses.



## SUMMER SUNDAY

Summer Sunday is a fundraising event hosted by the WHO and held at Grandview Tavern. The sixth annual Summer Sunday event was held on Sunday, August 6th, 2017. The event was a great way for friends and family to gather and enjoy live music by The Verbs, cocktails, heavy hors d'oeuvres, silent auction, and a grand raffle. Summer Sunday is our biggest and highest revenue generating event of the year. Money raised by the event allows Welcome House to continue operating the Emergency Shelter and provide the continuum of services to meet clients where they are at in their journey of homelessness. This is the only fundraising event where ALL revenue goes directly back to Welcome House and the clients we serve. In 2017, the event raised \$55,000 which helped provide over 1,400 nights in our Shelter for women and children.



*Those who contributed in support of Welcome House and Summer Sunday in 2017 include:*

### Platinum Sponsor

Direct Express

### Gold Sponsors

Baird - Tapke Dusing Group  
Cathie & Vince Klee  
Fidant Wealth Partners  
Macy's  
St. Elizabeth Healthcare

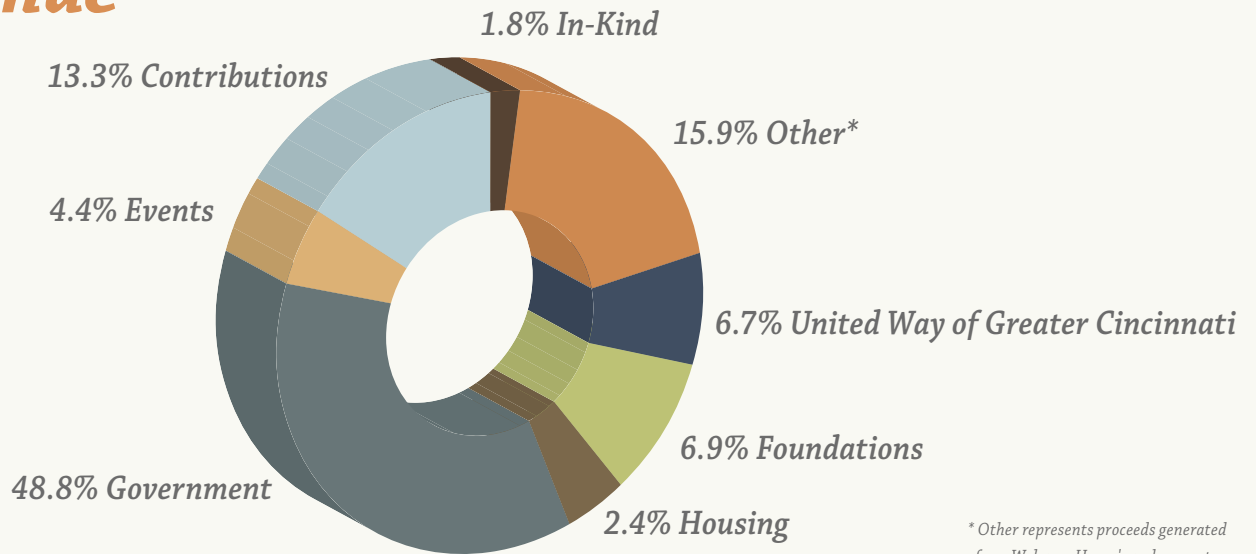
### Silver Sponsors

Bert & Jim Huff  
Bill & Jean Zeck  
Bilz Insurance  
David J. Joseph Company  
DBL Law

Griffin Elite  
John & Juanita Griffin  
Patricia Hemmer  
Sterling Cut Glass  
Toebben Companies

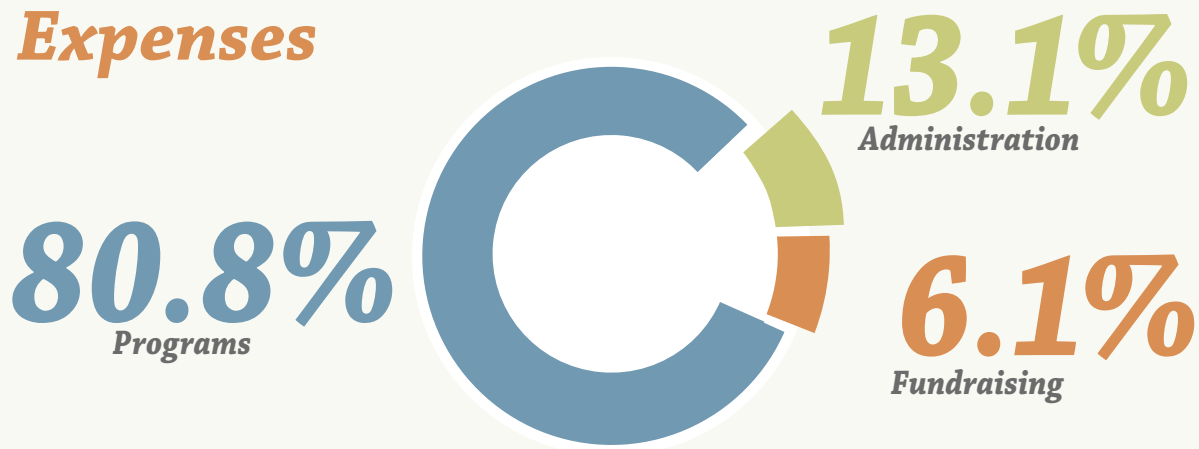


## Revenue



\* Other represents proceeds generated from Welcome House's endowment.

## Expenses



*Revenues and Expenditures  
are unaudited numbers*

# donations

All those who contributed to Welcome House in 2017 are recognized on the following pages. These contributions make it possible for us to continue to work toward our mission of ending homelessness and helping those who are the most vulnerable in our community move from housing uncertainty to housing stability. Thanks for your consistent and ongoing support.

*The contributions listed below are funds received above and beyond funds given through government agencies and pass-through dollars. Every attempt was made to include all individuals/groups who made a contribution to Welcome House in 2017. Please forgive any inadvertent misspellings or omissions.*

---

WE APPRECIATE YOU

---



**HERITAGE** (Gifts above \$25,001)

Kroger Company  
St. Elizabeth Hospital  
The Butler Foundation  
United Way of Greater Cincinnati

**LIFE** (Gifts of \$10,001 – \$25,000)

The R.C. Durr Foundation, Inc.  
Episcopal Society of Christ Church Cathedral  
Greater Cincinnati Foundation  
Tom and Brenda Hausterman  
Robert M. Krolage  
L'Oreal USA  
PFAU Foundation  
Scripps Howard Foundation  
The Spaulding Foundation  
Wild Flavors Inc.

**HOPE** (Gifts of \$5,001 – \$10,000)

Anonymous  
Apartment Association Outreach, Inc.  
Arkansas Community Foundation  
BB&T  
Henry and Elaine Fischer  
Pat Hemmer  
Cheryl Johnson and Jerry Rapien  
Chuck and Julie Geisen Scheper  
Jack J. Smith Jr. Charitable Trust  
United Way-EFSP  
WellCare Health Plans

**SPIRIT** (Gifts of \$1,001 – \$5,000)

Church of the Blessed Sacrament  
CoreLife Eatery  
Direct Express Delivery  
Disc 'N Dat  
Dressman Benzinger & LaVelle PSC  
Duke Energy Foundation  
Fidant Wealth Partners  
GE Foundation  
Gloria Dei Lutheran Church  
Griffin Elite  
IT Supply Solutions  
James T. Young Family Fund  
Knoebel & Vice PLLC  
Kroger Community Rewards  
Macy's / Bloomingdale's  
Passport Health Plan  
St. Joseph Church  
St. Timothy Parish  
Sterling Cut Glass  
Synergy Holistic Health Center  
The David J. Joseph Co.  
The Marge & Charles Schott Foundation  
Toebben Company  
Trinity Episcopal Church  
Wendy's  
Altar'd State  
Mark and Elizabeth Anderson  
Baird - The Tapke Dusing Group  
Joseph and Carol Bauer  
Michael and Teresa Brennan  
Chas H Bilz Insurance Agency, Inc.  
Frank Burns  
Terry and Cindy Carl  
Anita Connelly and Jeanne Dodd  
Brian Dickman  
John Eldridge and Ann Ruttle  
Chris and Melinda Greenwood  
Will Gregg  
John and Juanita Griffin  
Barbara and Joseph Haas

Charles and Diane Hammond  
James Harris  
William and Lynn Hemmer  
Bert and Jim Huff  
Stacie Key  
Vince Klee  
Brandon and Katie Koch  
Mark and Amanda Kolar  
Michelle and Dave Kolb  
Roseanne Kramer  
Neil and Sarah Leyshock  
Steve Meyer  
Gary and Kary Myers  
Wayne and Deborah Onkst  
David and Patricia Quast  
Beth and James Redwine  
Debbie Schroeder  
Elizabeth Stewart-Pirone and Joe Pirone  
Angie Taylor  
Michael and Rebecca Turney  
Edward and Mary Lou Vogel  
Bruce Walters  
Melody Weil  
Bill and Jean Zeck

**ESTEEM** (Gifts of \$501 – \$1,000)

120 Club  
Jeff and Becky Acuff  
Christopher and Debra Barnhart  
Michael Beeby  
BlueLyte Solutions  
Deborah Borchers  
Burke, Inc  
Brian and Jana Cox  
Patrick Crilley  
Custom Design  
Karen and Michael Daugherty  
Thomas Dinkel  
Shauna Dynes  
Steve and Mary Ellen Elsbernd  
Falcon Trading  
Thomas and Marilyn Feldman  
William and Beverley Frederick  
Mary Gray  
Richard and Deborah Grover  
H. Gordon Martin Foundation  
Marcus and Emily Hanna  
Stewart Horn  
Stephanie Huhn  
Identity Sportswear  
Kenton Heights Womens Club  
Steven Kneipp  
Barbara Leonard  
Chris and Jennifer Markus  
Mike Meyer  
Martin and Deanna Moon  
Kathleen Nadherny  
Claire Parsons  
David Pelgen  
William Renke  
Carol Rodgers-Rivir  
RSVP Homecare  
Marie Schenkel  
Signature Hardware  
Karen and Gary Smith  
Robert and Emily Spoerri  
St. Joseph School  
St. Walburg Monastery  
Ginny Tallent  
Thomas More College  
Trutschel Plastering, Inc.  
Vintage Salon Spa, Inc.

Welcome House Outreach Committee  
Pat Wheatley  
Michael Wilhelm

**STABILITY** (Gifts up to \$500)

Abby's Child Enrichment Center  
Frank Abell  
Donald and Mary Able  
Adath Israel Congregation  
Louis and Joyce Albers  
Lawrence and Nancy Allen  
Lisa Allen  
Carl Allison, Jr.  
Amazon Smile  
Ron and Mary Amend  
AMERIGROUP Corporation  
Danielle Amrine  
Donna Anderson  
Margaret Anderson  
Charles and Jane Andrew  
Eugene and Rosanna Ardine  
Donna Arlinghaus  
Timothy and Kirsten Auch  
Patricia D. Augur  
Candace Aulick  
Tom and Pamela M. Backer  
Donald and Diana Bahr  
Ralph and Patricia Bailey  
Ellen Baker  
Helen Baker  
Shawn Baker  
Tom and Jamie L. Baker-Prewitt  
Ruth Bamberger  
Charlene Bankemper  
Rebecca A. Barattieri and Brian J. Gebala  
Barnes Insurance Group  
Robert Alan Barrett  
Norbert and Pauline Baumann  
Jim and Lisa Bayne  
J. Victor and Kathleen Bean  
Douglas Bean  
Ann Beck  
Ron and Diane Becker  
Carol and Wayne Beckwith  
Dan Beebe  
Jenny Beene-Skuban and Benjamin Grabow  
Gregory M. Bender  
David and Nancy Bender  
Daniel Berger  
Daniel C. Berger  
Robert Berling Jr.  
Jennifer A. Berling  
Victoria Berling  
Andrea Besl  
Tiffany Bessey  
J. E. and Ruth Bessler  
Lois A. Best  
Inarayana and Sumathi Bhat  
James and Rebecca Bilbo  
Nicholas and Kelly Birkenhauer  
Michael and Suzanne Bish  
Steve and Connie Bishop  
Richard and Barbara Blank  
Blank Rome  
Neil and Maureen Blunt  
Christine Boehmer  
Henry and Joan Boehmer  
Jill Bohl  
Ginny Bolte  
Alma and Bill Bonham  
Kevin and Michelle Borowski  
Elroy and Elaine Bourgraf

David and Valerie Bowman  
Melissa Bradley  
brand it FOR GOOD  
Brett Bresser  
Michael and Janet Brewer  
Paula Brickler  
Kyle Broderick  
Richard and Mary Broeg  
Bromley Christian Church  
Ruth Broomall  
Aaron and Jodianne Broomall  
Robert and Rebecca Brown  
Paul and Sue Bruggen  
George Budig  
Paul and Linda Buelterman  
Kelly Buetsche  
Ann Bullock  
Bunches Of Bows  
Nancy and Thomas Bunnell  
Barbara Burkart  
Steve Burke  
Daniel Burr  
Andrea Buschmiller  
James and Barbara Bushman  
Lee and Marla Butke  
Karen and Terry Cady  
Virginia Cahill  
James and Mary Cahill  
Susan Callison  
Laura Canter  
Louise and Eric Canter  
Fred Carlin  
Katie Carlisle  
Emily E. Carnahan  
Concettina Carnevale  
Rita Carpenter  
Helen Carroll  
Martin E. and Kathleen A. Carvan  
Bryan Cash  
Centennial, Inc.  
Center for Great Neighborhoods of Covington  
Elizabeth Champ  
Robert and Linda Chase  
Vijaya Chaturvedi  
Ann Chisko  
Kate Chitkara  
John and Vickie Cimprich  
Darlene Clay  
Jason Colonel  
Colonial Cottage Inn, Inc.  
John and Elinor Comer  
Starr D. and Deborah H. Comstock  
James Conner  
Michael and Linda Conner  
David Cook  
Gary Cooper  
Kathy Cooper  
Amy Copelin  
Mary Corken  
Sue Corken  
Amanda Couch  
Country Cruisers Car Club Inc.  
Jennifer and Brian Cox  
Thomas and Lisa Cox  
Betty R. Craig  
Sharon Craig  
Amanda Crawford  
Joe and Ellen Creaghead  
Mary and Timothy Cronin  
David Crotty and Joan Von Handorf  
Crush Volleyball Club  
Jackson and Marian Cummins



# donations

James Cusentino  
Chris Cusentino  
Mary Cuti  
Michael Daugherty  
Holly Daugherty  
Jarrod Dauwe  
Tony and Dawn Davern  
David Suetholz  
David Davis  
David M. and Sandy Davis  
Paul and Linda Davis  
Robert Davis  
Megan De Sola  
Peggy Dean  
Jennifer Dean  
David and Mary Dean  
Gary Deitsch  
Cindy and Gregory Densler  
Libby Dermody  
Cheryl H. Derrick  
Jim and Marilyn Devenny  
John and Marsha DeWitt  
Wayne F. Dickens  
Lois Didier  
Frances A. Dietz  
Diocese of Covington  
Patricia Dion  
Janet Dixon  
Dobbling, Muehlenkamp and Erschell, INC.  
Marianne Doll  
John and Jodi Bowling  
Judy Dolwick  
Jean M. Donnell  
William and Mary Ruth Donnermeyer  
John and Ilda Dorsey  
Colleen Dowell  
Ralph and Irma Drees  
Thomas and Jeanne Dressman  
Ronald and Emily Droege  
Donald and Mary Dufek  
Dominik and Laura Dumancic  
Michael and Reanna Dunn  
Lori and William Dunsing  
Julie Tapke Dusing  
Michael and Deborah Dutle  
Betsy A. Dyas  
Valerie and Brook Dyas  
Carolyn Eagen  
Margaret Ebarb  
Theresa Eberly  
George and Zan Edmiston  
Edward and Deborah Elicker  
Ron and Deborah Ellis  
Gregory and Angela Ellison  
Ruby I. Emmelhainz  
Betty Engelman  
Gregory and Margaret Engelman  
Jason and Julie Enzweiler  
Allen and Kathy Ernst  
Donna Esposito  
Louis and Marilyn Esselman  
Martha Ewing  
Chris Fahlbusch  
Carol Fausz  
Scott and Janet Fedders  
James and JoAnn Fedor  
Diane Feldman  
Barbara and Richard Feldmann  
Vanessa Felipe-Morales  
Richard and Melissa Ferguson  
Fidelity Charitable Gift Fund  
Steve and Marianne Fieger  
Fifth Third Bank

Al and Laura Fike  
Ruth Finfrock  
First Christian Church, Covington  
First Christian Church, Ft. Thomas  
Tim and Donna Flanagan  
Jim and Ann Flood  
Michelle Fogel  
Stefanie D. Foppe  
Madriral Forrester  
Dieter Forthuber  
Keith and Judith Fortner  
Lisa Foster  
Frank's Men Shop  
Brett Frederick  
Barbara Freiermuth  
Michael and Deborah Frey  
Friends of Diane St. Onge Primary 2018  
Diane Fritz  
Steven and Jenifer Frommeyer  
Timothy and Beverly Frommeyer  
Joy Garrigues  
Dennis and Rita Geiger  
Dawn Gentry  
Martin and Lynda Gerrety  
Amy Gibbs  
Julie Gibbs  
Marcheta Gillam  
Doug and Karen Ginn  
Suzette Glaab  
Lena Goebel  
Dan Goetz  
Robert Goetz  
William Goetz  
Golden Age Social Club  
Kenneth and Mary Goldsberry  
Marie Goodchild  
Peter Goodwin and Peggy Eaglin  
Henrietta Goolsby  
Cathy Gratkowski  
Roger Grein  
Josephine Griffith  
Donald E. Grigsby  
Frank and Sue Gronck  
Mark and Catherine Guilfoyle  
Melrose Guthrie  
Janet Hackman  
Allan M. and Jean M. Hale  
Michael and Peggy Halpin  
Lisa K. Hamm  
Arlene Hammons  
Erin Hammond  
Tim Haney  
Kevin Hannon  
Tammy Hanson  
Dennis and Lorna Harrell  
Mary Beth Harrington  
Hannelore Harris  
Robert and Julia Harrison  
Cynthia Hassan  
Steven W. Hater  
Mary R. Haug  
Siegfried and Barbara Hausladen  
Katherine M. Hawk  
Leonard Hegna  
Roger and Mary Hehman  
Tom and Elizabeth Heist  
Terri Helsel  
Kevin and Carol Hemmer  
Mary Hemmer  
Robert and Patricia Hemmer  
Douglas and Lisa Henkes  
Cecil Hensley  
Michael and Mary Higgins

Highland Products LLC  
David Hill  
Misty K. Hillman  
Roderick Hinton  
Terry Hirschfeld and Gerald Sigl  
Ron and Sandra Hitzler  
Susan Hodge  
Kevin and Alyse Hoffer  
Robert and Diane Hoffer  
M. Gayle Hoffman  
Christine Hogan  
Karen Holbrook  
Keith and Kelly A. Holden  
Robert B. and Donna M. Horine III  
Robert M. and Kristin M. Horine  
Kristin Horine  
Carl and Bonnie Hosea  
James and Florence Howard  
John Howard  
Walter Howard  
Florence Howard  
John and Jennifer Howell  
Michael and Carolyn Hoyt  
Jennifer and Mike Hubbard  
Delilah Huber  
Jenni Huff  
Susan and Scott Huff  
Frank E. and Joan M. Huguelet  
Tom Huster  
Illinois Tool Works Foundation  
Steve Imel  
Jennifer Imsande  
Ethel Ingalls  
International Paper  
Brenda and L. Israel  
Samuel and Katherine Ivers  
Jeannine Ives  
Christine James  
Terri Jameson  
Kathy Janson  
Sharon Johnson  
Heather Johnston  
Kira Judd  
Just Give  
Sara and Philip Kahmann  
Frank Kallmeyer  
Lorraine Kawecki  
Thomas and Carol Kearns  
Keating, Muething, & Klekamp  
Debra Kees  
Marcia Keller  
Dennis and Michele Kelley  
Phyllis Kennedy  
Allison and Mick Kennedy  
Mary Kenning  
James and Mary Kersteiner  
Carol Kessler  
Thomas Ketteler  
William and Mavoureen Kiely  
Angela Kiger  
Rita Kinder  
Julie A. King  
Brittaney King  
Edwin and Brittaney King  
Judith Kinman  
Jackie Kirkpatrick  
Gerald and Dana Kirpes  
Jerome Kistner  
Jonathan Klein  
Mary Klingenberg  
Jane Kneipp  
Lisa and Kris Knochelmann  
Joyce Knoebber

Margaret and Thomas Knorr  
Kirk Knotts  
Mike Koch  
Trudy Koehling  
Julia Koenig  
Michael Koler  
Kordenbrock Interiors  
Charles and Ruth Korzenborn  
Sherra and Kevin Koshiol  
Jennifer Koslow  
KPMG  
Ken and Sandra Krumpelman  
Paul and Norma Krusling  
Christina Kuhnhein  
Michael and Carla Kursell  
L&N Federal Credit Union  
Dennis and Donna Laake  
Marsha Ladenburger  
Patrick LaFleur  
Lakeside Presbyterian Church  
Michael and Carol Landwehr  
Lucy Lane  
Mary Lane  
Paul and Rose Lankisch  
Elizabeth Gray LaPash  
Joe and Julie Larger  
Jerry and Pam Lasita  
Robert and Karen Lavelle  
John and Kim Lawless  
James and Lisa Lawson  
Hein Le and My Le Tran  
Garvin and Diane LeClaire  
Elaine and Carl Ledbetter  
Patricia Lee  
Christine Lewis  
Rick and Carol Leyshock  
James and Sylvia Liles  
Jacqueline M. Limke  
Jerome and Noreen Linneman  
Mark and Diane Linnemann  
Linnemann Funeral Homes  
Emily Lobert  
Mary Ann Lohre  
Don and Michelle Long  
Stephen and Jane Lorenz  
Lawrence and Dolores Losey  
Robert and Sallie Lotz  
John and Diana Lovelace  
Mark Lucas  
Alvin and Gloria Ludwig  
Jack and Linda Lundy  
Bob Lutkenhoff  
Doug and Janie Lyons  
Macy's  
Joyce Magary  
Tom Mahler  
Richard and Joan Maier  
Jean Majors  
Dennis Maley  
Karen Malott  
Mark Manning  
David and Kathy Manning  
Steve and Charlotte Markovich  
Walter and Marilyn Marksberry  
Peggy S. Marquardt  
Joseph and Mary Lou Marusin  
Robert and Connie Mason  
Mary Ellen Matts  
Timothy S. Mauntel  
Tim Mauntel  
Anne McBee  
John and Carrie McCoy  
Milton and Irene McCracken



David and Sandra McCrocklin  
 Elden and Julie McCubbin  
 McD Concrete Enterprises LLC  
 Clifford and Bernett McDine  
 Joan McDonald  
 Thomas and Barbara McDonald III  
 Mildred McElligott  
 Joseph and Kathryn McGee  
 Danny McGlasson  
 Richard McGlasson  
 Rodney McGlasson  
 Jennifer McGlasson  
 David and Patricia Meier  
 Debbie Meineke  
 Karen Menke  
 Richard and Mary Ann Menke  
 Thomas and Janet Mentrup  
 Robyn Mercer  
 Audrey and Bob Merrill  
 Beverly Merrill  
 David and Mary Ann Meyer  
 Richard and Annette Meyer  
 Richard and Gail Michalak  
 Ann and Joseph Milburn  
 Edward Miles  
 Paul and Cindy Miller  
 Ruth Miner  
 Martin and Melissa Mitchell  
 Deborah Moellman  
 Theresa Mohan  
 Stephen and Lynn Mokrovich  
 Diana Mondragon  
 John Morrison and Irene Jentz  
 Janice Mortenson  
 Donald and Nancy Morwessel  
 Neal and Kimberly Poore Moser  
 Janet Mott  
 Julie Mueller  
 Kathy Mueller  
 Kelly Mulzer  
 Jeffrey Muntel  
 Richard Murgatroyd  
 Bernadette Murphy  
 Sue Murphy and Sherri Sink  
 Philip and Karen Nagy  
 Kris and Glen Napolitano  
 Sandy and David Neely  
 Fred and Loretta Neff  
 James and Mary Nestheide  
 Mary Ann Nestheide and Darrell Archer  
 Network For Good  
 New Beginning Community Church  
 Van C. Nianouris  
 Northminster Presbyterian Church  
 Stephen and Cathy O'Bryan  
 Caroline M. Olberding  
 Maureen O'Malley  
 Amy E. O'Neal  
 Mitzie O'Neill  
 Jack Overmann  
 Col Owens and Milly Diehl  
 Polly Lusk Page  
 Bernard Paolucci  
 Kathy Papp  
 Robert Paul  
 Jason and Stacey Payne  
 Clifford B. and Marilyn S. Perkins Jr.  
 Briana Perry  
 Pesimmon Grove Baptist Church  
 Clifford and Hillary Pfeffer, II  
 Sally Pfetzer  
 Erik Pfingsten  
 Anna Marie Pieper

Kelly A. Pierson  
 Mary Ann Pietromonaco  
 Darlene M. Plummer  
 Kevin Poole  
 Susan Porter  
 Christian Poweleit  
 Curtis S. and Stephanie L. Powell  
 Carolyn S. Powell  
 Jeff Price  
 Rita Coveney and Robert Pudenz  
 James R. and Melissa C. Pulsfort  
 William and Heather Quigley  
 John and Grace Rademacher  
 Tom and Carol Rasp  
 Joyce Ravenscraft  
 Patrick and Patricia Raverty  
 Charlotte Read  
 Richard Rechten  
 Ted and Rebecca Reckers  
 Jim and Kathy Reeves  
 John and Jackie Reinecke  
 Remke Markets  
 Carolyn Rennekamp  
 Beverly A. Reno and Sheila R. Howe  
 Beverly Reno  
 Republic Bank  
 Barbara Rettig  
 Thomas and Sara Reynolds  
 Jay and Marilyn Rice  
 Patricia and Charles Richards  
 Brian and Carol Rieger  
 Marilyn Rifkin  
 Peter Rightmire  
 Kay Roberts  
 Kathy Robinson  
 Kenneth and Janice Roenker  
 Ronald B. Jones Funeral Home  
 Beth Rose  
 Joan Rothring  
 Robert and Marilyn Rothring  
 Robert and Deborah Rottman  
 Judy Rouse  
 Jane Roush  
 Stephanie Rowe  
 Larry & Tina Royalty  
 Rudler PSC  
 Robert Ruebel  
 Melissa Ruppert  
 Steve and Sandra Russell  
 Tim Ruttle and Nancy H. Simmons  
 Meg Ruttle  
 Chris Ryan  
 Vincente and Marie Salazar  
 Josh Sandfoss  
 William L. and Irvina R. Sandmann  
 Rina Saperstein and Jeffrey Davis  
 Andrew Saunders  
 Carol Schaefer  
 Sharon Schaefer  
 Kathryn Schaller and Kathleen Washam  
 Matt Schamer  
 William Scharf  
 Paul and Mary Lee Scheper  
 John and Patricia Schilling  
 Diana Schloemer  
 Carl and Sally Schlotman  
 Joe and Ginnie Schmidt  
 Donald and Janet Schmidt  
 Karen Schmidt  
 Michael and Joan Schoettelkotte  
 Thomas and Donna Schomaker  
 William M. and Julie Schuler  
 Judith Schulte

William and Joan Schunder  
 Leonard and Ruth Schwarte  
 Ruth Schweitzer  
 John Schwing  
 Diane and Thomas Seiter  
 Adelle Settle  
 Beth Sewell  
 Lois Shannon  
 John and Jackie Shea  
 Jane Sheehan  
 Doug Shields  
 Judith A. Shields  
 Ron Sickmeier  
 Terry and Maggie Sievers  
 Bonnie Silva  
 Sherri Sink  
 Sisters of Notre Dame  
 Sisters of St. Joseph the Worker  
 Michael Sketch  
 Brad and Donna Slabaugh  
 Russell and Jacqueline Slone  
 Richard and Brenda Smith  
 Bonnie Smyth  
 Julie Spanyer  
 Edward and Arlene Sparks  
 David and Jane Spaulding  
 J.T. Spence and Colleen O'Toole  
 Ruth I. Spencer  
 St. Elizabeth Healthcare  
 Vincent and Ann Stamp  
 Nancy Staurowsky  
 Ellen and James Staverman  
 David and James Steed  
 Dustin Steffen  
 Michael and Ann Steines  
 Daniel and Patricia Steinmetz  
 Sandra Stephens  
 Karen Stephens  
 Robert and Cathy Stevens  
 Bob and Kathy Stevie  
 Tasia Stieglmeyer  
 Warren O. and Regenna Stone  
 Beth Stratman  
 Laura Strehle  
 G. Stricker II  
 Anne C. Stricker  
 Stacie and Michael Strotman  
 Julee Stroup  
 Virginia Strunk  
 Barbara Stuart  
 Ashley Stuck  
 Alton and Mary Stumpf  
 Michael and Melinda Sucher  
 David Suetholtz  
 Gabrielle Summe  
 Roger and Elaine Sutton  
 Susanne Sweikata  
 Mary Sybert  
 Synchrony Financial  
 Jeanette Tanner  
 Trey and Stacy Tapke  
 Hari and Anuradha Tatini  
 Diana Taylor  
 Megan Taylor  
 Tracy Taylor  
 Kimberly Teegarden  
 David Tekamp  
 The 1441 Group, LLC  
 The Benevity Community Impact Fund  
 The Kelley Group Inc.  
 The T & H Schulte Trust  
 Kevin and Kelly Theissen  
 Rebecca Thomas

Thomas More College Education  
 Department  
 Paul and Adeline Throop  
 Lawrence and Mary Ann Tiemeier  
 James Timon  
 Diane Timon  
 Thomas and Lisa Tingley  
 Henry and Jenny Toebbe  
 Richard and Barbara Traud  
 Christine Trenholm  
 Sylvia Troescher  
 Harold and Elizabeth Trouten  
 Lisa Tucker  
 Beatriz Valle  
 Brian Vass  
 Angela Vasseur  
 Harold and Linda Vaughn  
 Linda Verst  
 Philip Viars  
 Viox and Viox Inc.  
 Vision One  
 Jon and Shelly Voet  
 Cheryl E. Vogelpohl  
 Marijo (Missy) Vogelpohl  
 Vonlehman & Company Inc.  
 Brett and Patricia Vories  
 Jon and Jane Votel  
 Nancy Wallace  
 Jody Wallen  
 Julie Walter  
 Tammy Waltermann  
 Robert Warnick  
 Debra Wash  
 Marc Webb  
 Alecia Webb-Edgington  
 Elizabeth Weber  
 Amelia Wehr  
 Gregory and Diane Wehrman  
 Andrew and Sarah Weinel  
 Steve Weiss  
 James Wells  
 Kenton and Martha Wells  
 Bob and Gerri Wenert  
 Kate Wenzel  
 Stephen Wertz  
 Thomas and Katie Wesseling  
 Virginia Wessner  
 Andrea Whalen  
 Michael and Mary Jo Whelan  
 Chiquita V. White  
 Deanna White  
 George Whitton  
 Mary Wigger  
 Carol Wiggins  
 Janice Wilkerson  
 Susan Williamson  
 Rachael Winters  
 William J. and Judith Wischer  
 Marvin and Karen Wischer  
 Ashley Withers  
 Earl and Mary B. Wittrock  
 Charlotte Wohlwender  
 Randy Wolf  
 Susan Wolfe  
 Aaron and Frances Wolfe-Bertling  
 Ralph and Arline Wolff  
 Kathy and Ken Woltermann  
 Bonnie Woodfin  
 Jacqueline R. Works  
 Ed and Beth Worland  
 Brittany Wren  
 James T. Wright and Amy M. Wright  
 Lynn and Jerry Wurtz

# donations

Donna G. Yeager  
Sharon Yee-Dufresne  
Dan Young  
Heidi David and David Young  
Linda Young  
Troy Young  
Tom and Cynthia Youtsey  
Scott Zahler  
Mark and Mary Ann Zalla  
Paula Zalla  
Josh Zembrodt  
Anthony and Gerry Zembrodt  
Nicholas and Peggy Ziegler  
Wilbert Ziegler

## IN-KIND INDIVIDUALS

Donald and Mary Able  
Anonymous  
Doug and Nancy Armbruster  
Shawn Baker  
Charlene Barlow  
Traci Barton  
Norbert and Pauline Baumann  
Sue Beckman-Huff  
David and Nancy Bender  
Rachael Berberich  
Tonya Borgatti  
Terry Bowlds  
David and Valerie Bowman  
Taylor Bray  
Michael and Janet Brewer  
Bethany Brewer-Ball  
Dina Brock  
Brittany Bucaro  
Karen Cady  
Laura Canter  
Louise and Eric Canter  
Terry and Cindy Carl  
Fred Carlin  
Carole Carter  
Robert and Linda Chase  
John and Terri Chesher  
John Cioffi  
Tricia Cogswell  
Katy Cookendorfer  
George Csordas  
Ginger Cumbee  
Karen and Michael Daugherty  
Jennifer Dean  
Elizabeth Dean  
Natalie Denham  
Whitney Dickerson  
Denise Dierig  
Sarah Dieringer  
John and Jodi Bowling  
Kay Dorning  
Jeffrey and Lynne Drews  
Marguerite Duncan  
Carolyn Eagen  
John Eldridge and Ann Ruttle  
Erin Elfers  
Susan Ellison  
Laura Engelbrink  
Carole Ewald  
Cindy Fangman  
Sherry Fein  
Rita Ferguson  
Steve and Marianne Fieger  
Steve and Debbie Fischer  
Mary Fitters

Regina Forster  
Nicole Fultz  
Gary and L. Gasper  
Jennifer Geiman  
Ron Gould  
Ashton and Lauren Gross  
Richard and Amanda Guinan  
Paul and Jenny Hadorn  
Maurice and Peggy Halpin  
Erin Hammond  
Charles and Diane Hammond  
Kelly Harney  
Barbara Harth  
Daryl Hauck  
Terry Haynes  
Pauline Healy  
Jennifer Heitker  
William and Lynn Hemmer  
Pat Hemmer  
Ann Hemmer  
Hugh and Jeanne Henry  
Sherrie Heringer  
Kevin and Alyse Hoffer  
Robert and Diane Hoffer  
Katrina Holtmeier  
Daniel Hutchens  
Wayne and Lin Isaacs  
Samuel and Katherine Ivers  
Terri Jameson  
Heather Johnston  
Sara and Philip Kahmann  
Bob Kaufman  
Will Keller  
Molly King  
Brittaney King  
Angel King  
Edwin and Brittaney King  
Judith Kinman  
Nancy and Viola Kinman  
Amy Kirk  
Jerome Kistner  
Margaret and Thomas Knorr  
Elaine Ledbetter  
Patricia Lee  
Mark and Diane Linnemann  
John and Diana Lovelace  
Carla Manning  
Tim Mauntel  
Lindsey McCarthy  
Elden and Julie McCubbin  
Cammi McGlone  
Joanne Meadows  
Edward Miles  
Noah Morgan  
Kathy Mueller  
Julie and Elmer Myers  
James and Mary Nestheide  
My-Hanh Nguyen  
Suzanne Northcutt  
Michael O'Brien  
Susan O'Neill  
Candace Padgett  
Jennifer Paganetto  
Susan Phillips  
Mary Ann Pietromonaco  
Lisa Raziano  
Beth and James Redwine  
Bonnie Riach  
Tina-Marie Richardson  
Kay Roberts

Korinne Rolf  
Stephanie Rowe  
Jessy Ruthsatz  
Gayle Scalf  
Marie Schenkel  
Jeanine Schilling  
Debbie Schoolmaster  
Jackie Schuler  
Beth Sewell  
Marshall Slagle  
Jeana Slaughter  
Doria Slusher  
Marilyn Smith  
Anna Smith  
Bonnie Smyth  
Patricia Southgate  
Mike and Mary Spaeth  
Sarah Staggs  
Hon. Patricia Summe  
Kathy Summe  
Gabrielle Summe  
Brian Talbert  
Trey and Stacy Tapke  
Melinda Taylor Fields  
Tina Thompson  
Judy and Bill Toeppen  
Barb Tuscan  
Hannelore Urton  
Shelley Volpenhein  
Cathy Vonlehman  
Colleen Walroth  
Jamila Watson  
Alecia Webb-Edgington  
Elizabeth Weckenbrock  
Dana Weinell  
Pat Wheatley  
Doug and Linda Wisher  
Lauren Wolfer  
Emily and Paul Wolff  
Sandy Wood  
Lynn and Jerry Wurtz  
Charlie and Ginny Yancey  
Sally Zeck  
Bill and Jean Zeck  
Matt and Joy Zeck  
Angela Ziegler

## IN-KIND GROUPS

A One Fabric Restoration  
Anonymous  
Apartment Assoc. Outreach, Inc.  
Barnes Insurance Group  
Barnes Temple AME Church  
Blank Rome  
Bressler and Company  
Chako's Bakery Cafe  
Cincinnati Zoo & Botanical Gardens  
Cincy Shirts  
Citi Trends  
City of Covington  
City Of Edgewood  
Country Inn Suites  
Kim Crail  
Davita Crestview Hills Dialysis  
Delta Kappa Gamma Epsilon  
Diocesan Children's Home  
Dwellings on Madison, LLC  
EGC Construction

Erlanger Christian Church  
ESCO Corporation  
First Christian Church  
Five Seasons Family Sports Club  
Girl Scouts Troop 391  
Green Sky  
IT Supply Solutions  
Kentucky Innovation Network  
Keystone Bar and Grill  
Knitters are Purls  
Lakeside Presbyterian Church  
Lakeside Presbyterian Women  
Ludlow-Bromley Yacht Club  
Mary Queen of Heaven School  
Maslow's Army  
Midwest Eye Centers & Drs.  
Halpin, Noll & Jaweed  
Nemco Fashions  
New Beginning Community Church  
NKU Social Work  
Northern Kentucky Bar Association, Inc.  
Northern Kentucky Montessori  
Northwestern Mutual  
NTEU Chapter 73  
Perry Park Ladies Association  
Rainbow  
Rudler PSC  
Scripps Howard Foundation  
Sign Tech  
Smoke Justis  
St. Agnes Church  
St. Barbara Church  
St. Elizabeth Healthcare  
St. Pius Elementary  
The Happy Church & Navajo Mission Leader  
Triumph Strength & Conditioning  
Tuesday Group for Shelter  
Wayfair  
Tom Wei  
Welcome House Outreach Committee



# STAFF MEMBERS

18

## *Leadership Team*

Danielle Amrine, Executive Director  
Candace Aulick, Director of Program Operations  
Justin Beale, Director of Program Operations  
Elizabeth LaPash, Compliance and HR Director  
Beverly Merrill, Director of Housing Services  
Kelly Rose, Development & Marketing Director  
Brian Van Arsdale, Operations Director

## *Administration*

Ashley Anderson, Development Grant Writer  
Kirsten Auch, Accounting & Payroll Supervisor  
Sara Kahmann, Development Coordinator  
Jasmine Murdoch, Accounting Clerk  
Kay Roberts, Data & Technology Specialist  
Roseanna Yarnell, Receptionist

## *Service Coordination*

David Bazler, Service Coordinator  
Sierra Brown, Service Coordinator  
Dan Clifford, Assessment & Resource Coordinator  
Amanda Couch, Service Coordinator Supervisor  
Connor Craghead, Outreach Service Coordinator  
Julie Doyle, Intensive Outreach Service Coordinator  
Delores Quevedo, Service Coordinator Assistant


## *Income/Benefits*

JP Decker, Street Outreach Service Coordinator  
Chris Hammann, Street Outreach Service Coordinator  
Christina Koopman, Benefits Team Lead  
Robyn Mercer, Payee Service Coordinator  
Susan Ostendorf, Social Security Outreach Assistant  
Andrea Price, Payee Account Manager  
Dayna Schambach, Social Security Outreach Specialist  
Kashauna Shepherd, Social Security Outreach Specialist  
Ashley Withers, Payee Service Coordinator

## *Housing & Shelter*

Kenya Anderson, Shelter Advocate  
Taylor Bray, Shelter Advocate-Reserve  
Karin Brooks, Shelter Advocate  
Tonya Brooks, Shelter Advocate-Reserve  
Yolanda Hamza, Rapid Re-Housing Service Coordinator  
Katie Henderson, Shelter Advocate-Reserve  
Beth Johnson, Shelter Advocate  
Chrystal Kelow, Shelter Advocate  
Crystal Kirkendall, Shelter Cook  
Misty Lester, Shelter Advocate  
Kenyatta Sims, Shelter Advocate-Reserve  
Julie Walter, Housing Staff & Facilities Supervisor  
Emma Wilson, Shelter Service Coordinator  
Steven Withers, Housing Navigator  
Carrie Wynn, Shelter Advocate

*\* represents Welcome House employees as of December 31, 2017*



*A special thank you to our staff who work tirelessly to make our mission of ending homelessness possible. It is because of you that we are truly able to take our clients from housing uncertainty to housing stability. You are appreciated more than you will ever know.*

Ways to get involved:

volunteer  
**donate**  
ADVOCATE



*Ending*  
Homelessness



Like or follow us for  
more information  
and to stay up to  
date on everything  
Welcome House.

☎ 859.431.8717 📠 859.431.6297  
205 W Pike St. | Covington, KY 41011

🌐 [WelcomeHouseKY.org](http://WelcomeHouseKY.org)



Agency Partner

